

SERVING NEW ENGLAND

FREE

TRUCK AND EQUIPMENT POST

Buyer - Seller - Swapper



2013 IH DURASTAR C&C. AUTOMATIC, 26,000 GVW, A/C, 55K MILES, AIR BRAKES, 22.5 RUBBER, VERY CLEAN, \$42,500. OBO 978-804-7194



2012 KOBELCO SK140SR. 1,756 HOURS, HEAT, A/C, AUX. HYDRAULICS, 30" PADS, COUNTERWEIGHT, BLADE, 30" BUCKET, HYDRAULIC THUMB, TILTING BUCKET, \$111,900. 207-885-0600



2004 IH 4300 CAR CARRIER. 25,500 GVW, HYD BRAKES, AIR PARKING BRAKE, SPRING RIDE, 10,000 LB DECK, 8000 LB WINCH, 3500 LB WHEEL LIFT, \$25,000. OBO 401-783-5979



CAT 300 KW GEN SET 3406, WITH FACTORY WEATHER ENCLOSURE, BLOCK HEATER, BATTERY CHARGER, MUFFLER, FUEL TRANSFER PUMP, EXCELLENT COND., 1000 HRS, \$19,500. 802-464-2637



1997 KALYN 48' X 102" 35 TON SLIDING AXLE TRAILER. 12,000 LB WINCH, \$15,000. OBO 401-783-5979

Optative Group



**Issue 04-05
Feb 3rd, 2016**

**INTERNET & PRINT
FOR ONLY \$25.00**

www.TruckAndEquipmentPost.com

888-887-0505

**Buy a new CASE Skid or Track Loader
Now, No Payments Until May 2016
1.25% Financing to Qualified Buyers**



EQUIPMENT INC.

**231 Sheep Davis Road (Rt 106), Concord NH
Business Hrs: M-F 7am - 5am • 603-225-6621**



FAMILY OWNED & OPERATED FOR OVER 50 YEARS!

WE HAVE YOUR NEXT WORK TRUCK!!!

GREAT SELECTION OF HARD TO FIND COMMERCIAL TRUCKS. BEST SELECTION-GREAT SAVINGS. GIVE ROB A CALL



IT AINT OVER TILL IT'S OVER as Yogi would say. That said, if you're ready for a new plow truck, Give Rob a call, he can help you out. X233

2015 GMC 3500 CREW CAB UTILITY



DIESEL

Diesel, SLE pkg, pw, pl, tilt, cruise, locking diff, snow plow prep, HD Aux Battery, & more. Knapheide utility body, diamond plate tops and rock guards, spray in liner, hitch and MORE!!

2015 GMC SIERRA 3500 DOUBLE CAB



PW, PL, Cruise/Tilt, Locking Diff., Snow plow prep., Blue Tooth Radio, Roof Marker Lights and more. KNAPHEIDE Utility Body, Spray in Liner, Bumper Hitch and more. Ready for work. Call Rob Today. X233

OWNER OPERATOR RIG



MANY TO CHOOSE

2015 GMC SIERRA 3500 SLE Crew Cab 4x4: Diesel, Allison, SLE pkg., LOADED, ZEUS Aluminum drop side dump, stainless steel toolbox, poly fenders, hitch, tarp & more. CALL ROB x233

2015 GMC SAVANA BOX TRUCKS



MANY TO CHOOSE

Dual or single rear wheel, PW, PL, Locking Diff., A/C, and more. 10' and 12' available. Great for Contractors or Delivery Trucks, Call Rob while they last at Ext. 233

2015 GMC SIERRA 3500 CREW CAB SLE 4x4



duramax Diesel, Allison automatic, PW, PL, Tilt. Dual Batteries, Running boards, Aluminum wheels, Bucket seats w/consol, Remote starter, R.window defogger, fog lamps Roof marker lights. KNAPHEIDE UTILITY. Spray Liner, Diamond plate tops & kick plate. Aluminum Rack, ATTENTION owner operators! Call ME Rob @ ext. 233

ATTENTION CONTRACTORS!

Free Maintenance Package for 2 Year/ 24,000 miles, See Rob for Details! MON.-FRI. 8:30 A.M. to 7 P.M. • SAT. by appointment

Call Rob Today @ 888-744-9957 x233

EASY TO REACH EXIT 17 OFF I-495

Email: RWebster@vendettiMotors.com www.vendettimotors.com

411 WEST CENTRAL ST. FRANKLIN, MA 02838



TRUCK TIRES & WHEELS FOR SALE: MANY SIZES AVAILABLE, OVER 100 IN STOCK. ALSO WHEELS, ALUMINUM & STEEL HUB STUD PILOT & DAYTON. PRICES START AT \$75. CALL OR TEXT MARTY IN MASON NH, 603-801-2405, DONKODIAC@AOL.COM



1994 FORD L9000, cab and chassis, 33,500 GVW with a 20,000lb lift axle, L10 Cummins motor, 10-speed trans. Asking \$6,500. 508-563-5566



2005 CHEVY W5500, 4CYL., DIESEL, AUTO. \$12,995 401-944-5200



HANOMAG ARTICULATED LOADER, cab, bucket, forks, just serviced, \$12,995, Belchertown, MA, 413-478-9790

14 FT. EVEREST SANDER/DUMP. Complete w/flow control, spreader, chute, barn door, hydraulic cover, 3 scuttles, recent chain. \$3800 OBO. E. Bridgewater, MA 508-269-1515



FULL SERVICE BODY SHOP. SANDBLASTING AVAILABLE FOR ALL SIZE EQUIPMENT. 781-582-1378



FORD L8000, Crane model 1700 JBT year 2000, 70' three section boom, 23' to 40' foldout jib, \$25,500 OBO. Call Steve at 401-429-7191

URGENT NOTICE: 1 DAY ONLY!



MAJOR PUBLIC AUCTION

With Equipment From

ARMETTA LLC



(Per Order of U.S. Bankruptcy Court, District of Connecticut, Chapter 11 Proceedings Case #15-31399)

& SEARS TOOL RENTAL OF N.WINDHAM

(Complete Liquidation)

& AREA CONTRACTORS & EQUIPMENT DEALERS

275 ROUTE 32, NORTH FRANKLIN, CT 06254

FRIDAY, JANUARY 29, 2016, 9:30AM

CRUSHING & SCREENING EQUIPMENT: EXCAVATORS: RUBBER TIRED LOADERS: BUCKETS & ATTACHMENTS: ARTICULATED END DUMP: VAN BODY TRUCK: TRAILER: LARGE GENSETS: LIGHT TOWERS: PUMPS: WELDER: FLEET VEHICLES: ROLLOFF & STORAGE CONTAINERS: ENTIRE INVENTORY OF RENTAL EQUIPMENT, TOOLS, SUPPLIES & MORE!



QUALITY CONSIGNMENTS BEING ACCEPTED

* TERMS: An 8% Buyer's Premium Applies to the Assets of Armetta LLC. These Will Be Sold Subject to the Approval of the U.S. Bankruptcy Court. All Announcements Day of Sale Supersede Previously Advertised Terms & Conditions.

ONLINE BIDDING THROUGH EQUIPMENTFACTS • CALL FOR INFORMATION & PICTURE BROCHURES



Phone: (860) 642-4200 Fax: (860) 642-7900 www.petrowskyauctioneers.com



INTRODUCING THE ALL-NEW HD2™ & HDX™ SNOWPLOWS



NOW WITH A FULL LINE OF ACCESSORIES



IN Stock & Available NOW!

1-800-322-1111



Truck Bodies & Equipment
 63 Bridge St. Salem, MA
www.BrakeAndClutch.com



Truck Sales



MON-FRI 8-6 SAT 8-NOON

680 Newfield St. (RT 3) Middletown, Conn • **800-378-0342**

OVER 200 TRUCKS AVAILABLE



Used Box & Flatbed Body
Clearance Sale! 12 to 29 Foot.
60 To Choose.
Prices Starting @ \$500
Installation Available.
Ask For Sales.



2011 Ford F750 Cab & Chassis
6.7L Cummins, Allison auto, #5394,
\$33,900



2006 Hino 185 16' Box Truck
diesel, Allison transmission, low
miles, #0308, \$16,900



2009 Chevy W4500 12' Box Truck,
automatic, 101K miles, #1481,
\$19,900



2007 Isuzu NPR-HD Cab &
Chassis 78K miles, diesel, auto,
#1052, \$23,900



2013 Hino 268 under CDL, 26' box,
lift gate, #2589, \$39,900



2009 Freightliner Cascadia 125
Detroit 505, auto, #4596, \$43,900



2012 Isuzu NPR only 34,576 miles,
auto, AC, #3387, \$29,900



2007 Chevy W4500 only 53K miles,
16' box, diesel, #4374



2010 Mitsubishi FE180 diesel,
automatic, with lift gate, #0078,
\$30,900



2009 Freightliner M2 Tandem
Chassis 8.3L Cummins, 330 HP, air
ride, #1926, \$41,900



2005 & 2006 GMC T7500 Cab &
Chassis 200HP, Allison auto, 120"
CA, #1183, Starting @ \$25,900



2010 GMC Savana 12' Cube Van
V8 gas, auto, AC, #0276, \$16,900



2011 Ford E350 16' Cube Van V8
gas, automatic, #8438, \$18,900



2007 Isuzu NQR Crew Cab &
Chassis diesel, auto, #3772,
\$24,900



2006 UD 3300 Flatbed Crane Truck.
Hook welder, generator, heavy duty
crane, ONLY 68K MILES, #5065,
\$35,000



2007 Isuzu NPR HD diesel, auto,
AC, 102K miles, #4948, \$21,900



WWW.TRUCKSELLERS.COM



CAT 300 KW GEN SET 3406, WITH FACTORY WEATHER ENCLOSURE, BLOCK HEATER, BATTERY CHARGER, MUFFLER, FUEL TRANSFER PUMP, EXCELLENT COND., 1000 HRS, \$19,500. 802-464-2637



A. RICCIOTTI
INSURANCE ASSOCIATES, LLC
START WITH A STRONG FOUNDATION

Snowplow and Landscaping Insurance
Commercial Property
General Liability
Worker's Compensation

401-654-6711

Licensed in RI, MA, CT and NY



1999 PETERSON 4400 WOOD HOG, V12 CAT, ABOUT 4,000 HOURS, \$125,000/ MAKE OFFER, 413-268-3600 OR 413-535-7210



1976 35 TON NGB DETACHABLE TALBERT LOWERED. Recent refurbished. Very nice shape. 1-888-212- 5419

MAJOR CHANGE IN DIRECTION / INVENTORY REDUCTION FROM FRANGILLO FAMILY FARM
591 WASHINGTON STREET WRENTHAM MA
SATURDAY JANUARY 30TH - PREVIEW AT 7:30 AM - AUCTION STARTS 9:00 AM



FEATURING: MAJOR LINEUP UP QUALITY LATE MODEL UNITS! EXCAVATORS, LOADERS, SKIDSTEERS & MORE
EXCESS INVENTORY REDUCTION OF FLEET VEHICLES FROM NEW ENGLAND REFRIGERATION
AND MORE FROM OTHER AREA CONTRACTORS AND DEALERS.



VISIT OUR WEBSITE
WWW.NORTHCOUNTRY-AUCTIONS.COM





CONSIGNMENTS WANTED! CALL TODAY
P: 603-539-5322 EMAIL: INFO@NORTHCOUNTRY-AUCTIONS.COM

AUCTIONEER LAWRENCE SPELLMAN MA LIC# 3230

TRUCK AND EQUIPMENT POST

**P.O. BOX 6824
PROVIDENCE, RI 02940
TEL: 888-887-0505
EMAIL:
ADS@TRUCKANDEQUIPMENTPOST.COM
WWW.TRUCKANDEQUIPMENTPOST.COM**

YOUR INFORMATION

NAME : _____ PHONE : _____
 STREET ADDRESS : _____
 CITY : _____ STATE : _____ ZIP : _____
 EMAIL : _____
 PAYMENT :   CHECK
   OTHER ACCOUNT NUMBER : _____
 SIGNATURE : _____ EXP DATE : _____

PLACE YOUR AD ONLINE AT WWW.TRUCKANDEQUIPMENTPOST.COM

- | | | | |
|--------------------------|-----------------------------|--------------------------|--------------------------|
| <input type="checkbox"/> | STANDARD PHOTO AD | # ISSUES | <input type="checkbox"/> |
| | \$25 FOR 1 ISSUE (2 WEEKS) | | |
| | \$45 FOR 2 ISSUES (4 WEEKS) | | |
|
 | | | |
| <input type="checkbox"/> | JUMBO PHOTO AD | <input type="checkbox"/> | |
| | \$50 FOR 1 ISSUE (2 WEEKS) | | |
| | \$90 FOR 2 ISSUES (4 WEEKS) | | |

PHOTO AD



Your description goes here as follows:
Year, Make, Model, Features, Price, Town & State, Phone

PAYMENT ENCLOSED \$ _____ **EACH ISSUE RUNS FOR 2 WEEKS**

AD TEXT _____

*1 item per ad please. We reserve the right to edit or refuse ad content.

SUBSCRIPTION RATES INCLUDE FIRST CLASS SHIPPING.

MAILED TO YOUR HOME OR BUSINESS

\$40.00 13 ISSUES **\$65.00 26 ISSUES**

**Just email Ads@TruckandEquipmentPost.com
and type "BAG MY MAG" in the subject line.**

NEW WE'LL EMAIL THE MAGAZINE TO YOU FOR FREE



125 Industrial Drive, North Smithfield, RI 02896

P.O. Box 979, Slatersville, RI 02876 866-403-3332

NETRUCKSOLUTIONS.COM

FULL SERVICE FACILITY, OPEN 6 DAYS A WEEK
MON-FRI- 6:30 A.M. -10 PM SAT 8AM-2PM

TRUCK SOLUTIONS

SALES AND SERVICE, LLC

FULL BODY SHOP, PARTS DEPARTMENT, ONSITE GRAPHICS DEPARTMENT, FABRICATION & MORE



ONLY DEALER TO WIN YOKOZUNA AWARD, THE MOST PRESTIGIOUS HINO AWARD FOR 2 CONSECUTIVE YEARS



2016 HINO 268A & 338'S, AUTO, 260 H.P.'s, AIR RIDE, 26FT. KENTUCKY MOVING BODIES, IN STOCK!!!!



2016 HINO 268 AUTO 26X102X103, MORGAN BODY. HTS0368



2016 HINO 155, 16X96X97, FULL STEP UP BUMPER



2016 HINO 268A, 220 HP, 26X102X103, 3,300 LB TUCKAWAY LIFT GATE, 90 GAL. FUEL TANK, AUTO. HTS0402. \$\$\$CALLSSS



NEW CABOVER HINO 195, 17,950 - 19,500# GVW, AUTO TRANS, LOADED 3 MAN CAB, 114-173 WB, CALL OR DETAILS!



2016 HINO 195, 210 HP, AUTO, SPRING SUSP, 20X96", HINO COE W/20' KENTUCKY MOVING BODY, HTS0330. CALL FOR PRICING.



2016 HINO 195, 20X96X97, LIFT GATE, HTS0388, CALL FOR PRICE!!!

HINO



TRUCKS



HINOCARE IS OUR 2 YEAR OR 60,000 MILE (WHICH EVER COMES FIRST) PREVENTIVE CARE PROGRAM FOR THE 195/195-DC(DIESEL) MODEL.

A Toyota Group Company



2016 HINO 258 ALP, SET UP FOR A WRECKER BODY, CHOOSE WHITE OR BLACK. N.A.P



2007 FREIGHTLINER M2 190K MILES, 6 SPEED, 18FT. REEFER, TKT200 ELECTRIC STANDBY, ENGINE HOURS ARE 2,337. \$26,800.



2004 UD, 68K MILES, BRAND NEW SCORPION ATTENUATOR, AIRBRAKE, 6 SPEED, READY TO GO!!! UTS0321. \$50,000.



MANAGERS SPECIAL \$19,900.

2008 GMC W3500, 117K MILES, 16X96X84 VAN BODY, UTS0320. \$19,900.



2013 HINO 268, 24FT. WITH LIFT GATE, AUTO. 93K MILES, N.A.P. \$57,500.



2011 ISUZU NPR ECOMAX, 158K MILES, 16FT. BOX \$23,500.



2011 FORD E350 REEFER WITH STAND BY, GAS, AUTO, 84K MILES, UTS0344. \$23,500.



2008 FRIEHTLINER M2, 6 SPEED, 33K GVW, 240K MILES, 26X96X109. UTS0338. \$33,500



2008 INTERNATIONAL 9900i: 72" CONDO MID ROOF SLEEPER, 397K MIES, CUMMINS ISX ENGINE, 500HP, AUTO, 10SPD, CD, SIRIUS GPS, LOADED, DUAL HIGH BACK AIR RIDE SEATS, TOO MUCH TO LIST!!!! UTS0334. \$50,000



(2) 2011 FREIGHTLINER M2'S, 6 SPEED, 185-213K MILES, 26X102X103, 2 TO CHOOSE FROM STARTING AT \$28,500. HTS0345.

INCOMING:
2006 INTERNATIONAL 8600, 246K MILES, NEW INJECTORS, 9 SPEED, SINGLE AXLE, UTS0332. \$26,750.

Dealer is not responsible for errors in price, or in description of vehicles, by the editors of Truck Post & Equipment

CAREY AUTO
INC
TRUCK EQUIPMENT
SALES

37 County Road
Route 106
Plympton MA 02367
PH: 781-582-1378
FAX: 781-585-4438

**SWITCH-N-GO SYSTEMS & CONTAINERS
IN STOCK.**



**READY TO GO COMPLETE TRUCK PACKAGES. LOTS OF
OPTIONS AVAILABLE.
PRICES STARTING AS LOW AS \$26,500**

SALES, SERVICE, PARTS **CALL TOLL FREE: 866-637-4076** **CUSTOM METAL FABRICATION AVAILABLE**
WWW.CAREYTRUCKEQUIPMENT.COM



2005 CHEVY SILVERADO 2500HD WITH PLOW,
4x4, extended cab, alloys, step rails, low miles, #3039, \$17,995,
www.centermotortrucks.com, 866-556-3177



**2015 CTX 918 WHEEL
LOADER. HEAT/AC, QUICK
CHANGE, JOYSTICK CONTROL,
INCLUDES SNOW BLOWER, SNOW
PLOW, 4 WAY BUCKET,
22 HOURS, \$32,500,
203-395-0391**

Childs
INC
169 Great Western Rd. – So. Dennis, MA on Cape Cod
508-509-4844 Ask for Larry

CAM SUPERLINE **CASE CONSTRUCTION** **MAG** **TORO** Count on it. **terramite** by FerroQuip



1999 VOLVO L50C: This machine is getting a new engine. Will be ready to go by early February. 1.7 yard bucket, heated cab. Nice clean Interior and good seat. Front coupler and good bucket. 30% tires, slight rot on steps, could use some fresh paint. Don't miss out. Come see me. Ask for Larry \$49,500



1999 VOLVO L120C: Just in. Needs a few things. Missing radio, cracked windshield, small dent on engine cover. Needs seat cushion cover and machine is due for service. 13,825 hours, see more photos on our website. \$54,900

www.RobertChildsInc.com



ATTENTION!!! CONTRACTORS, PLUMBERS, ELECTRICIANS, PAINTERS.
LET LEO, MIKE & J.T. HELP YOU W/2015 179 TAX CODE \$SAVINGS.

**OVER 100
PLOW
TRUCKS
READY FOR
DELIVERY!**



**HURRY!
ORDER
NOW AND
BE READY.**



**New F550 4x4
Dually Cab &
Chassis
w/11' 3-4 Yard
Dump Body**



**New F350 4x2 Cab
& Chassis w/3 Yard
Dump Body, tool
box, hitch, tarp,
shovel box**



**New F250 4x4:
Gas, SRW, Utility
Body.**



**New F350 4x4 Dually
Cab & Chassis
w/2-3 Yard Dump,
tarp, hitch,
trailer plug**



**New F350 Super
Cab SRW
7' Utility Body**



**New F350 4x4
Dually Cab &
Chassis
w/ Utility Body**



**New F350 4x4
Dually, Cab &
Chassis w/9'
Landscape Body.
6.7L Power Stroke
Diesel.**



**New F350 Super
Cab 4x4 Dually Cab
& Chassis
w/9' Dump Body**

JACK MADDEN TRUCK HOT LINE



888-817-7979

US Rte. 1, aka The Automile Norwood, MA



**LEO KERIVAN
TRUCKSPECIALIST
24 Years Experience**



**MIKE GAFFNEY
TRUCKSPECIALIST
62 Years Experience**



**JOHN THOMAS
TRUCKSPECIALIST
65 Years Experience**

All prices include rebates for qualified buyers. All vehicles require dealer financing! Some prices include snow plow rebate.



**YOU KNOW IT'S COMING DAMIT!
WE'RE READY! F150, F250, F350, F450 &
F550"s. IN STOCK FOR IMMEDIATE DELIVERY.**



**NEW F450 & F550
REGULAR-SUPER & CREW
CABS- 2 & 4WD.
GAS OR DIESEL IN STOCK
READY TO GO!**



**NEW 2015 FORD F250 4X4
SUPERCAB W/ 8' FISHER PLOW,
Go to
WWW.JACKMADDENFORD.COM
for more details**



**NEW FORD F350 SRW 9' SERVICE
BODY, POWER GROUP,
Go to
WWW.JACKMADDENFORD.COM
for more details.**



**NEW FORD F250 4WD 8' SRW
SERVICE BODY, GAS & DIESEL IN
STOCK, Go to
WWW.JACKMADDENFORD.COM
for more details.**



**NEW 2015 FORD 250 4X4
REGULAR CAB XL W/8' FISHER
PLOW, 6.2L AUTO, Go to
WWW.JACKMADDENFORD.COM
for more details.**



**NEW F450 BIG BOY LANDSCAPE
ALUMINUM BODY
\$63,840 M.S.R.P.
\$11,000 Jack' Discount
Your cost: \$53,840 Truck & Body
Add 9' Fisher plow. All for \$57,690**



LEO KERIVAN
Truck Specialist
617-429-7385



MIKE GAFFNEY
Truck Specialist
781-760-5563



JOHN THOMAS
Truck Specialist
781-727-8095



888-817-7979

US Rte. 1, aka The Automobile Norwood, MA

All prices include rebates for qualified buyers. All vehicles require dealer financing. Some prices include snow plow rebate.





LARGE INVENTORY ON THE GROUND AND READY TO GO!!!
LET LEO, MIKE & J.T. HELP YOU W/2015 179 TAX CODE SAVINGS.



The All New 2015 TRANSIT with Carrier Refrigerated Unit. Fuel efficient, economical, Great to drive.



OVER 100 E-SERIES TRUCKS OUTFITTED TO MEET YOUR NEEDS.THEY'RE HERE, AND THEY ARE SPECTACULAR!!!



NEW FORD ECONOLINE E350 SRW 10' DURACUBE MAX BODY

Go to WWW.JACKMADDENFORD.COM for more details.



NEW FORD ECONOLINE E350 DRW 12' DURACUBE MAX TOOL BODY

Go to WWW.JACKMADDENFORD.COM for more details.



NEW FORD ECONOLINE CUTAWAY KUV & READING ALUMINUM SERVICE BODIES. IN STOCK READY TO WORK!



Go to WWW.JACKMADDENFORD.COM for more details.



LEO KERIVAN
Truck Specialist
617-429-7385



MIKE GAFFNEY
Truck Specialist
781-760-5563



JOHN THOMAS
Truck Specialist
781-727-8095



888-817-7979
US Rte. 1, aka The Automile Norwood, MA




All prices include rebates for qualified buyers. All vehicles require dealer financing. Some prices include snow plow rebate.



**East Kingston, New Hampshire,
Call Today:
603-770-5125**

 <p>ALL NEW: REVOLVER 508 TROMMEL SCREEN, Cat Diesel, 5' x 8' Quick change drum, Reversible rotation, 4-1/2 Cu.Yd. hopper, 8' dump height /load with skid steer, Weighs 10,000 lbs, hydraulic legs for hook-up, Units in Stock.</p>	 <p>2000 Morbark Tub Grinder Forestry edition Model 1000 Tandem axle with fifth wheel, Cat diesel @ 425 HP, Low hours @ 1928 Remote Control Mag head pulley Price \$115,000</p>	 <p>2008 Volvo L90F- \$89,500.00 2007 Volvo L90F- \$84,500.00 2005 Volvo L60E- \$49,000.00 2004 Volvo L70E- \$52,000.00</p>
---	---	---



2007 KENWORTH T300 CAB & CHASSIS W/ALUMINUM LIFTGATE: PACCAR DIESEL, 408K MILES. RUNS GREAT. \$17,950 508-294-1781



NEW HOLLAND FORD 445 BACKHOE LOADER, 4x4, 3 point hitch, PTO, \$16,900, Belchertown, MA, 413-478-9790

1994 JOHN DEERE 410D 4X4 BACKHOE LOADER: EXT. HOE, 50% RUBBER, 7,500 HOURS, 4 IN 1 BUCKET, CLEAN WELL MAINTAINED MACHINE. JUST \$19,700 CALL CHRIS 866-637-4076





www.wbhill.com
WB HILL
Serving You With New Ideas



305 Shaker Rd P.O. Box 428
East Longmeadow, Ma 01028
wbhillinc@aol.com • www.wbhill.com
<https://www.facebook.com/WBHILLINC>
888-537-3613 • 413-525-6665




IN STOCK! 2016 PETERBILT, HEIL 2800 GAL 2 COMP, E4000 REGISTER, PRINTER IN BACK, 1 3/8X175FT HOSE, HANNAY EZ PULL REEL, FLASHBACK MANIFOLD, BLACKMER PUMP, AND MORE. CALL FOR MORE INFORMATION.



TENCO 9 FOOT DUMP AND SANDER BODY, \$5000., Winchester, NH 603-239-7008



2004 INTERNATIONAL 4300 FLATBED. Auto, hyd brakes w/air parking brake, spring ride, 10,000 lb. bed with 8,000 lb. winch & 3,500 lb. wheel lift, 25,500 GVW, \$25,000 OBO. 401-783-5979



1996 FORD L8000. 8.3 Cummins, 5.2 rear, 35,000 GVW, central hyd to front for power angle plow, central hyd to rear for sander, 100K miles, \$4500 OBO. 774-253-0681

TRUCK COUNTRY

USED PARTS FOR WORK TRUCKS

ENGINES • TRANSMISSIONS • DOORS



LIKE NEW

8' Iroquois Dump Body like new condition, complete, #154629, \$3,500



FREE DELIVERY IN NEW ENGLAND

12' Aluminum Storage Box with roll up door, \$1,500



ROCK SOLID

1996-00 Chevrolet Crew Cab with power doors, #154517, \$3,500 Call Dan



NEW TAKE OFFS

New Ford Super Duty Beds w/ Gate & Lights. Starting @ \$2,500



W/ DIESEL MOTOR

Ford Super Duty with 6.0L diesel, manual doors, #154484, \$2,000



NO RUST

1981-93 Dodge Ram Short Bed no rust, #144263, \$1,000



NO RUST

1994-02 Dodge Ram Short Bed super clean, many more to choose, #154184, \$1,500



RUST FREE

2003-09 Dodge Ram Short Bed rust free, many colors in stock, #154513, \$2,500



ANTIQUE DUMP

1920/30's Antique Dump Body w/ hand crank dump, nice shape, \$1,500

Engines • Transmissions • Truck Bodies • Doors • Wheels • Tires • Differentials • Transfer Cases • Bumpers • Seats • Beds

SAVE \$\$\$

ALL PARTS GUARANTEED

SAVE \$\$\$

Call Today Toll Free !

1-800-852-6004

1535 WEST MAIN STREET, WILLIMANTIC, CT
WWW.TRUCKCOUNTRY.US



Mon-Fri 8-5
Sat 9-1

CERRONE

You'll be glad you did!



ROUTE 1, BETWEEN 95 + 295 SOUTH ATTLEBORO, MA 1-508-761-4800

PLENTY OF CHASSIS HERE NOW!!!



DOUBLE CABS

\$40,500 #16095G

2016 K2500 & 3500'S

- * CHOOSE CHEVY OR GMC
- * CHOOSE 6' OR 8' BED
- * CONVENIENCE PKG.
- * H.D. TRAILERING
- * NICE COLOR SELECTION



CREW CABS

\$42,795 #16106G

**2015 4X4 DIESEL DUMP TRUCKS
CHOOSE 9' OR 11' BODY**



CONV. PKG., PLOW PREP, HITCH, COVER, TRAILER BRAKE, 13,200 GVW.

\$51,000 #15432G

2015 12' RACK TRUCKS



CONV. PKG., HITCH, TRAILER BRAKE, 13,200 GVW.

\$37,500 #15675H

2015 4X4 DIESEL CREW CAB DUMPS



CONV. PKG., PLOW PREP, HITCH, COVER, TRAILER BRAKE, 13,200 GVW.

\$54,000 #15645H

2016 4X4 UTILITY



CONV. PKG., HITCH, 10,700 GVW.

\$42,995 #16077G

2016 4X4 DOUBLE CAB UTILITY'S



CONV. PKG., PLOW PREP, HITCH, 11,000 GVW., GREEN-RED.

\$46,995 #16047G

2016 CHASSIS



CONVENIENCE PKG., TRAILER BRAKE, 13,200 GVW., FITS 10-12' BODY.

\$33,995 #16111H

2016 4X4 CHASSIS



CONV. PKG., PLOW-PREP., TRAILER BRAKE, 13,200 GVW, CHOOSE 60" FOR 9' BODY OR 84" FOR 10-12 BODY.

\$36,995 #16097H

2016 4X4 DIESEL CHASSIS SLE / LT



CHOOSE A BLACK SIERRA SLE OR A WHITE SILVERADO LT., 13,200 GVW, FULL POWER EQUIPMENT, PLOW PREP, 60" CA FOR 9' BODY OR A WRECKER.

\$47,995 #16110G #16124H



WWW.CERRONEGM.COM
WWW.CERRONETRUCKSALES.COM

SALE PRICES INCLUDE ALL REBATES INCLUDING LOYALTY, CONQUEST, TRADE-IN, FINANCE REBATE.



CERRONE

You'll be glad you did!



ROUTE 1, BETWEEN 95 + 295 SOUTH ATTLEBORO, MA 1-508-761-4800

2015 KUV



9900 GVW., 6.0L, LOCKING AXLE, POWER WINDOWS + LOCKS, TILT, CRUISE, LADDER RACKS.

\$39,995 #15666H

2016 10' TRADESMAN



9,000 GVW, LOCKING AXLE, TILT, CRUISE, CENTRAL LOCKING.

\$38,995 #16128H

2016 12' TRADESMAN



12,300 GVW., 6.0L, TILT, CRUISE, LOCKING AXLE.

\$41,495 #16129H

2016 10' HI-CUBE



9,900 GVW., LOCKING AXLE, TILT, CRUISE.

\$34,995 #16126H

2015 12' HI-CUBE



12,300 GVW, 6.0L, LOCKING AXLE, TILT/CRUISE.

\$33,995 #15345G

2016 14' HI-CUBE



12,300 GVW., 6.0L, LOCKING AXLE, TILT/CRUISE, 57 GAL. TANK.

\$35,695 #16033G

2015 15' HI-CUBE



12,300 GVW, 6.0L, LOCKING AXLE, 57 GAL. TANK.

\$34,500 #15434G

2015 15' HI-CUBE W/ PEAK



12300 GVW., 6.0L, LOCKING REAR AXLE, POWER WINDOWS, TILT, CRUISE.

\$35,995 #15669H

2015 17' HI-CUBE W/ PEAK + RAMP



14200 GVW., TILT, CRUISE, LOCKING AXLE, 57 GALLON TANK.

\$38,995 #15356G

2015 CITY EXPRESS VAN



RED OR WHITE

1500LB PAYLOAD, BLUETOOTH.

\$18,995 #15486H #15479H

2016 3/4 TON VANS



8,600 GVW., DOOR GLASS, PARTITION, SHELVING. BLACK OR WHITE

\$31,500 #16067H



WWW.CERRONEGM.COM
WWW.CERRONETRUCKSALES.COM



SALES PRICES INCLUDE ALL REBATES INCLUDING LOYALTY, CONQUEST, TRADE-IN

CERRONE

You'll be glad you did!



ROUTE 1, BETWEEN 95 + 295 SOUTH ATTLEBORO, MA 1-508-761-4800

PLENTY OF 2500 + 3500'S

2015 K3500 DOUBLE CAB SLT



HEATED BUCKET SEATS., NAV., Z71, PLOW PREP., SPRAY-IN -LINER.

\$49,995 #15457G

2016 K2500 DOUBLE CAB INDIGO BLUE METALLIC



INTELLINK AUDIO SYSTEM, CONV. PKG., PLOW-PREP, H.D. TRAILERING.

\$42,995 #16123G


2015 K3500 CREW CAB SLE DURAMAX DIESEL



HEATED SEATS, NAV., PREFERRED PKG., PLOW-PREP., Z71.

\$52,995 #15404G

2015 K2500 DOUBLE CAB WOODLAND GREEN



CONV. PKG., PLOW-PREP., H.D. TRAILERING, 6 1/2' BED.

\$41,000 #16097G


2015 K2500 DOUBLE CAB LT DARK GREEN METALLIC



LT CONV. PKG., PLOW-PREP., H.D. TRAILERING, 8' BED.

\$47,500 #16121H

2016 K3500 CREW CAB LTZ DIESEL Z71



DURAMAX PLUS PKG., NAV., PLOW PREP., Z71 OFF-ROAD PKG.

\$58,995 #INCOMING

2016 DENALI DUALY DIESEL



DURAMAX PLUS PKG., SUNROOF.

\$62,995 #16098G

2016 K3500 DOUBLE CAB DIESEL DUALY



CONV. PKG., ASSIST STEPS, PLOW-PREP, H.D. TRAILERING.

\$50,995 #16122G

2016 K3500 HIGH COUNTRY DIESEL



DURAMAX PLUS PKG., PLOW PREP., DRIVER ALERT PKG., NAV.

\$61,995 #16143H

2016 K3500 CREW-CAB DIESEL DUALY



CONV. PKG., PLOW-PREP, H.D. TRAILERING, ASSIST STEPS

\$52,995 #16108G

2016 K3500 CREW-CAB LT DUALY



LT CONV. PKG., PLOW-PREP, H.D. TRAILERING, REAR PARK ASSIST, POWER ADJUSTABLE PEDALS, HEATED SEATS.

\$48,995 #16125H



WWW.CERRONEGM.COM
WWW.CERRONETRUCKSALES.COM

SALE PRICES INCLUDE ALL REBATES INCLUDING LOYALTY, CONQUEST, TRADE-IN, ALLY BANK/GM FINANCIAL FINANCING.





Tight Link Fence Co.
Residential ~ Commercial ~ Industrial
Mark Dillon
774-365-0222



CAM SUPERLINE GOOSENECK DUMP TRAILER
16100 GVW, ramps, 3 way gate, 82x14, 2 yr warranty, low profile, \$8,699, Belchertown, MA, 413-478-9790



HILLSBORO ALUMINUM BED STARTING AT \$2,990., Winchester, NH 603-239-7008



1988 CAT D4H, w/ EROPS, 6200 HOURS, UC 60%, HIGH TRACK, 6 WAY BLADE, TOW HITCH. \$25,999 • 508-697-6779



TSR RACING PRODUCTS
"WE WROTE THE BOOK"
Your #1 source for **POWERGLIDE**, TH350, TH400 and A727 transmissions and components
800-394-5889
www.tsr-racing.com



2007 DODGE DAYTONA RT: SUBLIME, 5.7L 350 H.P., 18" ALLOYS. ONLY 1,500 EVER BUILT. 29K MILES. FIRST \$19,500 GETS IT. BRYN 855-313-2441. HOPEDALE, MA



2000 FORD F350, 4x4 pickup, 7.3 diesel, auto, recent complete brakes, ball & axle joints, bearings, etc., etc, never plowed, bed rough, good sander or plow chassie, 800-464-0573, www.WestsideTruckEquipment.com



Chadwick-BaRoss
A STRONGCO Company



Inclined Screens



Jaw Crushers

 **TEREX | FINLAY**

WE PROUDLY REPRESENT THE TEREX FINLAY LINE OF AGGREGATE EQUIPMENT THROUGHOUT NEW ENGLAND.



Heavy Duty Scalper



Impact Crushers

PLEASE FEEL FREE TO CONTACT US FOR YOUR SALES, RENTAL, PARTS AND SERVICE (NEW AND USED) NEEDS!



Horizontal Screens



Cone Crushers

CALL TODAY!
978-987-2793

BANGOR, ME
188 Perry Road
Bangor, ME 04401

CARIBOU, ME
314 Main Street
Caribou, ME 04736

CHELMSFORD, MA
15 Katrina Road
Chelmsford, MA 01824

CONCORD, NH
237 Sheep Davis Road
Concord, NH 03301

WESTBROOK, ME
160 Warren Avenue
Westbrook, ME 04092



37 County Road
Route 106
Plympton MA 02367
PH: 781-582-1378
FAX: 781-585-4438

MOBILE FLEET SERVICES!



- ALL OUR SERVICE TRUCKS ARE EQUIPPED WITH:**
- Cranes capable to pick up 7000lbs. and up to 16 foot reach.
 - Welders, compressors, and all tools and supplies necessary for road repairs.
 - Computer Diagnostics for medium and heavy duty trucks.
 - Onsite hydraulic line repairs and replacement.
- WE CAN BE REACHED FOR SERVICE AT 781-582-1378**

**SALES,
SERVICE,
PARTS**

CALL TOLL FREE: 866-637-4076
WWW.CAREYTRUCKEQUIPMENT.COM

**CUSTOM METAL
FABRICATION
AVAILABLE**



2001 FORD EXCURSION 7.3L POWERSTROKE DIESEL, 4x4, heated leather seats, 3rd row, loaded, #3037, \$14,995, www.centermotortrucks.com, 866-556-3177



1990 JOHNSON SWEEPER ON A FORD CARGO 7000, DIESEL, UNDER 4,000 MILES, PONY MOTOR, GREAT SHAPE, GREAT FOR STREET SWEEPING. \$10,000 • 508-697-6779



1978 CHEVY 4X4. Automatic, 3000 original miles. Must See, Asking \$6,500. Call for specs, Stamford, CT 203-358-8311

HOLLISTON TRUCK

1569 WASHINGTON ST, HOLLISTON, MASS 01746
WWW.HOLLISTONTRUCK.COM • CALL 508-429-7678

TAKE EXIT 20 OFF RT 495 TO RT 16 EAST TO HOLLISTON WE ARE ON THE LEFT

GET READY !! SNOW WILL BE COMING TO A STREET NEAR YOU

<p>2007 INTERNATIONAL 4300, DT466, 225 HP., PRE-EMISIONS, 6SPD., 26K GVW, SPRING SUSP., SINGLE FRAME, AIR BRAKES, AIR SEAT, CRUISE, STEREO, PW/PL., A/C, 2WAY ELECTRIC PUMP, NEW 12.5' STEEL GODWIN BODY BODY, 2 WAY GATE, NEW SCOTT HOIST, TARP, HITCH REC. \$34,500</p>	<p>2008 FREIGHTLINER M2 BUSINESS CLASS, CUMMINS ISB, 210HP., 26K GVW, SPRING SUSP., 4.56 GEARED RATIO, SINGLE FRAME, AIR BRAKES, AIR SEAT, A/C, 2 WAY ELECTRIC PUMP, NEW 11.5 STEEL GODWIN BODY, 2 WAY GATE, NEW SCOTT HOIST, TARP, HITCH REC. \$37,500</p>	<p>2005 INTERNATIONAL 4300 DT366, 225 HP., ALLISON 3000 AUTO, 26K GVW, SPRING SUSP. W/ HELPERS, 5.57 GEARED RATIO, SINGLE FRAME, AIR BRAKES, AIR SEAT, A/C, 2WAY ELECTRIC PUMP, 12" STEEL GRAIN BODY, 2 WAY GATE, 4' SIDES, HITCH PLATES. #35,500</p>	<p>2007 FREIGHTLINER M2 BUSINESS CLASS, CAT C7, 210 HP., PRE-EMISSIONS, ALLISON AUTO, 26KGVW, AIR-RIDE SUSP., 4.33 GEARED RATIO, SINGLE FRAME, AIR-BRAKES, AIR SEAT, GODWIN BODY, 2WAY GATE, NEW SCOTT HOIST, TARP, HITCH REC. \$37,500</p>

WE BUY PARTS-TRUCKS" FOR CASH !

<p>2006 INTERNATIONAL 4300, DT466, 225 HP., 6SPD., 26K GVW, SPRING SUSP. W/ HELPERS, SINGLE FRAME, HYD. BRAKES, A/C, 4.33 GEARED RATIO, PTO, 9' STEEL DUMP, 3 CHUTES, TOOL BOX, TARP, HITCH REC. \$34,500</p>	<p>2007 INTERNATIONAL 4300, DT466, 225 HP., 6SPD., 26K GVW, 4.11 GEARED RATIO, ENGINE BRAKE, SPRING W/ HELPERS SUSP., SINGLE FRAME, HYD. BRAKES, AIR SEAT, PW/PL., A/C, ELECTRIC OVER HYD. HOIST, 11' CHIP BOX DUMP, 6' HIGH, HITCH REC. TOOL BOX. \$32,500</p>	<p>2007 FREIGHTLINER M2-112, MBE-4000, 410HP., 10SPD., 35K GVW, SPRING SUSP. W/ HELPERS, SINGLE FRAME, AIR BRAKES, AIR SEAT, A/C, PTO, LOCKING REAR END, AIR-RIDE CAB, 158" WB, NEW 11' STEEL SUPER CITY BODY, NEW SCOTT HOIST, TARP, HITCH, AIR TO REAR, DIAMOND PLATE SIDE BOARDS. \$35,500</p>	<p>2007 FREIGHTLINER M2 BUSINESS CLASS, CAT C7, 210 HP., 6SPD., 33K GVW, SPRING SUSP. W/ HELPERS, 4.11 GEARED RATIO, SINGLE FRAME, AIR BRAKES, AIR SEAT, A/C, PTO, 10' STEEL BODY, 3 CHUTES, TARP, HITCH, SERVICE RECORDS AVAIL. \$35,500</p>



Westbrook, ME

Bangor, ME

Caribou, ME

Concord, NH

Chelmsford, MA



ITEM 8330 2004 KOMATSU PC160LC-7- 36" DIGGING BUCKET, 63" HYD TILT BUCKET, MANUAL COUPLER, EXCELLENT CONDITION, UNDERCARRIAGE IS 70%, 3600HRS \$ 53,500.00



ITEM 8329 2005 DEERE 120LC- HYD THUMB, 36" DIGGING BUCKET, 60% UNDERCARRIAGE, VERY CLEAN, READY TO WORK. 6400HRS \$48,500.00



ITEM 8327 2000 CAT 938G – G.P. BUCKET WITH BOCE, CAB HEAT, 30% RUBBER. \$48,000.00



ITEM 8323 1994 VOLVO L120B- COUPLER, 3RD VALVE, 40% RUBBER, CAB HEAT. \$35,000.00



ITEM 8312 2000 YANMAR VIO70- 2 TO CHOOSE FROM, RUBBER TRACKS, BLADE, POWERTILT SYSTEM WITH COUPLER. 30" DB AND 48" TILT BUCKET. \$19,500.00 AS IS



ITEM 7918 2012 HYUNDAI 80CR-9- COUPLER, 3RD VALVE, HYD THUMB, 30DB AND A 48"HYD TILT, RUBBER TRACKS, BLADE. 800HRS \$67,500.00



ITEM 8332 2004 TAKEUCHI TL130- COUPLER, 3RD VALVE, A/C & HEAT, RUBBER TRACKS AT 70%, GP BUCKET, \$19,500.00



ITEM 8234 2007 TAKEUCHI TW65 COUPLER, 3RD VALVE, GP BUCKET \$38,500.00



ITEM 8310 TAKEUCHI TL250 COUPLER 3RD VALVE, RUBBER TRACKS CAB. \$37,000.00



ITEM VR131 VOLVO DD29



ITEM 8250 VOLVO SD115 LIKE NEW \$103,000.00



ITEM 8292 – HITACHI EC200LC-5 COUPLER 2 BUCKETS, \$22,500.00

CALL 877-540-3823

visit www.chadwick-baross.com or www.CBused.com



1987 MACK R688ST. 350 4 valve, 15 spd., engine brake, 2-line wet system, 44 rears on bronze, recent trunnion. Clean truck, but frame issues, \$9000 OBO. NY 607-434-4919



BIBEAU BODIES AND PARTS, cylinders, hinges, call with your needs, in stock, 860-984-8989



MEDIUM DUTY TOW TRUCK. Mercedes Benz motor & smart shift auto trans, Vulcan 897 14 ton body, stainless steel boxes, air brakes & air ride cab, 29,000 GVW, \$25,000 OBO. 401-783-5979



2000 FORD F350. 7.3 diesel, 2WD, auto, great running/driving truck, flatbed, toolboxes, transfer tank & pump, new brakes all around, good oil pan, new rockers. Good solid work truck, \$7000. Leominster, MA 978-230-1504



2005 CHEVY SILVERADO 1500 4X4, extended cab, alloys, auto, only 64K MILES, #3040, \$16,995, www.centermotorstrucks.com, 866-556-3177



1993 ELGIN EAGLE SWEEPER ON FORD CARGO 7000 CHASSIS, 183K MILES, DIESEL, BRUSHES 80%, EVERYTHING WORKS WELL, NEEDS NEW BOX & TIN WORK. \$10,000 • 508-697-6779



JOHN DEERE 5500. 73HP, 4x4, cab loader qa bucket, heat, rear hydraulics, \$25,600, Belchertown, MA, 413-478-9790

"Does your automatic transmission look like this?"

TSR Racing Products can help!"

"Your source for domestic, rear-wheel-drive performance automatic transmissions and parts"



**Keene, NH
800-394-5889
www.tsr-racing.com**



WE TAKE ANYTHING IN TRADE

Jolly John's

Truck & Equipment

FINANCING AVAILABLE

Find us on: facebook.

2013 Bobcat S530 Enclosed cab skid steer with heat. Only 577 hours, recently serviced, 49 HP turbocharged diesel, 6480 pound operating weight. **\$27,999**

2012 Bobcat E35 Excavator, 1206 hours, just serviced, hyd thumb, 33.5 HP, 7466 lb machine, 2866 lb rated lift capacity, max dig depth 10.2 ft, max dump ht 11 ft. **\$35,999**

1990 Ford L9000 single axle dump truck, 33,200 GVW, 3306 CAT, 8 speed, **\$11,500**

We Pay CASH For Your Trucks & Equipment

2010 Kenworth T800 Sleeper in excellent condition, all tires are good, air ride, 52000 GVW, 12000 fronts, **\$42,000**

2012 International Paystar Tractor 500 HP Max Force diesel, 18 speed Eaton Fuller Tans, 46K rears, 18K front, full lock package, VIN 1HSNUSMT9CJ621950, **\$54,995**

2013 Mack CXU613 Tractor with sleeper, refrigerator, 234000 miles, 445 HP Mack diesel, auto trans. Must be sold due to illness. **\$74,900**

Call Nick 860-861-1326 or Mike 860-861-4199
www.jollyjohnstruckandequipment.com

FINANCING AVAILABLE



Chadwick-BaRoss
A STRONGIRCO Company

TAKEUCHI



**NEW TS70V
2 SPEED/HEAT/A-C
\$609.00 PER MONTH LEASE**



**NEW TL8 TRACK LOADER
\$697.00
PER MONTH /INCLUDES TAX**



**NEW TB290 LOADED
\$1369.00 PER MONTH
60 MONTH LEASE / INCLUDES TAX**



**NEW TB290 WITH ROAD LINER PADS / LOADED
\$1429.00 PER MONTH
60 MONTH LEASE /INCLUDES TAX**



**2008 TL250 1785HRS
/ CLEAN / CAB/HEAT/A-C
\$37,000.00**



**NEW TB260 LOADED
\$949.00 PER MONTH
60 MONTH LEASE / INCLUDES TAX**

DAN ROTT

**CALL TODAY!
978-479-5192**

**15 KATRINA ROAD
CHELMSFORD, MA**



MIKE'S
Truck & Trailer
Repair inc.

Truck & Car
Computer
Diagnostics

ASE
CERTIFIED

RI EMISSIONS
SAFETY
TESTING

Full Service Truck and Auto Repair Center.

447 York Ave, Pawtucket, RI 02861 • (401) 725-2188

PAWTUCKET, RI

**MEDIUM/HEAVY TRUCK & RV SERVICES
FEDERAL DOT & RI STATE INSPECTIONS**

- *All makes engine repairs
- *Fuel pumps
- *Brake work
- *Electrical repair
- *Injectors
- *Oil changes
- *Trailer repair
- *Turbo
- *Lift gate problems
- *Welding fabrication
- *Heavy equipment
- *Front ends
- *Rear roll-up door repairs
- *Installation
- *Wiring circuits

FORD 6.0 DIESEL POWER STROKE SPECIALIST !



FORD 6.0 DIESEL POWER STROKE SPECIALIST !



visit our website @ mikestruckandtrailerpawt.com • RI# 459ca

CASE 450B DOZER. DIESEL, power shift, ROPS cab, good tracks & bottom, 6 way blade w/new edges, 4K hours, fully serviced, been in heated storage last 23 years, 800-464-0573, www.WestsideTruck-Equipment.com



2002 DODGE RAM 2500 SLT CUMMINS DIESEL, 4x4, quad cab, very nice, #3036, \$14,995, www.centermotorstrucks.com, 866-556-3177



1999 STERLING DUMP TRUCK. 60,000 GVW, 190K on a 330 CAT motor, 8LL transmission, new clutch, good breaks, electric tarp, \$42,000 OBO. 781-760-5494, email prestigeasphalt@gmail.com

Salami's **ISUZU TRUCKS OF BOSTON** 

**50 Gas Chassis in Stock, Dumps* Box's * Refrigeration *
0% Financing Available**



2015 ISUZU NPR HD. Gas, 14,500 GVW, 12 Ft Utilimaster Trademaster Body, All Power Option. #0211, \$43,995*



2015 ISUZU NRR CAB & CHASSIS. Swap Your 18-20 Ft , Air, Power, Seatcovers, Heated Mirrors, #3132, \$47,995 *



2015 ISUZU NPR. Gas, 16 Ft Morgan Van, E-Track, Walk Ramp, All Power Option. #5170, \$39,995 *



2016 ISUZU NPR HD. Gas, 14,500 GVW, 20 Ft Morgan Dry Freight Box, Translucent Roof, E-Track, Walk Ramp, All Power Option. #0485, \$45,995 *



2016 ISUZU NPR HD. Gas, 14,500 GVW, 12 Ft Aluminum Landscape Dump Body, All Power Option. #0691, \$46,995 *



2016 ISUZU NRR. Diesel, 19,500 GVW, 20 Ft Morgan Body, Translucent Roof, E-Track, Walk Ramp, Keyless Entry. #0723, \$56,995 *

IN STOCK IMMEDIATE DELIVERY CALL JOHN CIAMPAGLIA 781-645-2356

* Prices Reflection Cash Incentives In Lieu Of Low Finance Program



TOM SCHRODER
 Commercial & Fleet Sales Mgr
 31 Years Of Trust And Experience



Contact Tom Directly
508-789-4769



2016 Ford F650 24' VAN BODY.
 E-track, Scuff Plate, 300 HP, Automatic,
 Air Brakes, Power Windows & Locks,
 Exhaust Brake, Stk#F100006, \$82,900



2016 Ford F650 DUMP. 300HP, Air Brake,
 Automatic, Power Windows & Locks,
 Exhaust Brake, 4-6 yd Body, Pintle, Toolbox,
 Load Cover, Stk# F100005, \$80,900



2016 Ford F650 DUMP. 300HP, Air Brake,
 Automatic, Power Windows & Locks,
 Exhaust Brake, 4-6 yd Body, Pintle, Toolbox,
 Load Cover, Stk# F100001, \$80,900



2016 Ford F650 SUPER CAB. 5 Passenger,
 Automatic, Power Windows & Locks, Alum.
 Wheels, Air Brakes, Ready for your Body, No
 CDL 26,000 GVWR, Stk# F99985, \$70,900



2016 Ford F750, 33,000 GVWR, 300HP,
 Automatic, Power Windows & Locks,
 Alum. Wheels, Exhaust Brake, Ready
 for your Body, Stk# F100009, \$74,900



2016 Ford F550. 4x4, 6.7 Liter, 12'
 Landscaper Dump, Side Door,
 Stk# F100772, MSRP 68,460 call for
 Details



2016 Ford F550 Super Cab. 4x4, 9'
 Landscaper Dump, Side Door, 6.7 Liter,
 Stk# F100829, MSRP 72,600 call for
 Details



25 IN STOCK

2016 Ford F550 XL, 4x4, 6.7 Liter, 60" CA for
 up to 9' Body, Electronic Shift, Trailer Brake,
 Plow Pack, Windows, Locks, Stk# F99373,
 MSRP \$57,660 call for Details.



2016 Ford E350, 5.4 V8, Power
 Windows, Locks, Mirrors, 15' Aerocell
 HiCube, Cab Access Door,
 Stk# F100630, Call for Details



2016 Ford E350, 5.4 V8, Power Windows,
 Locks, 12' Rockport, Cab Access Door, Tool
 Compartment Access Doors, Ladder Rack,
 Stk# F100570, MSRP \$47,300 call for Details.



2016 Ford F250 Utility Body, 6.2 V8 ,
 4x2 Inexpensive Work Truck,
 Stk# F100172, call for Details



10 AVAILABLE

2016 Ford Transit 250, 3.7 Liter, Reading
 Classic Service Body, Aluminum
 Construction, 600lbs lighter, No Rust!!!
 Stk# F100730, MSRP 47,700
 call for best Price.

QUIRK FORD
 540 Southern Artery (Rt 3A) Quincy, MA
 www.quirkford.com

F650&F750 now in stock
 Best Medium Duty
 Warranty in the Business
 5 Years/250,000 Miles
 Engine and Transmission



**1996 FORD LS8000
PLOW TRUCK.**
16,800 MILES, \$28,000.
CALL FOR DETAILS,
RICH 401-640-6726



1998 INTERNATIONAL 4800. 4x4, EXTRA HEAVY Hooklift, (as NEW), 9,369 actual miles, DT466 210hp, 6 spd., 37K GVW, 176 WB, 13.5 flatbed, 32K lb. Stellar 62" Hooklift, 36K lb. Tulsa winch, \$94,500. 603-759-8880



**2000 FORD F350 SUPER DUTY 7.3L
POWERSTROKE DIESEL,** 4x4, lift kit, only 109K miles, #3038, \$14,995, www.centermotorstrucks.com, 866-556-3177

**DRESSER
COMPRESSOR:**
220 Single Phase,
\$500 080.
401-486-0034



1983 MACK U-MODEL 685. 250 hp, 5 speed, 38R, runs & drives great, needs some TLC to be road worthy, great export truck, \$6500 or possible trade. Paul, 774-286-6434



2005 GMC K3500, V-8, 6.6 DURAMAX DIESEL, AUTO, 12K GW, POWER-UP / DOWN, DUMP BODY W/ 9' FISHER PLOW, TOW-HITCH, CLEAN UNIT. 401-944-5200

**1997
INTERNATIONAL
GARBAGE
PACKER.**
Packmore body,
DT466 MECHANICAL
engine, Allison auto
trans. Tires are at
90%, 160K miles,
originally from
Virginia, \$18,500.
Hull, MA 781-925-0977



1994 FORD F350. 4x4, Must See, Asking \$16,000. Call for specs, Stamford, CT 203-358-8311

Village 800 Cheshire Rd. (Rt.8)
Lanesboro, MA 01237
Truck Sales (413) 442-0407
www.villagetrucksales.com

ALL UNITS ACQUIRED FROM MUNICIPALITY FLEETS



2004 IH 7600 T/A Dump 46K Hendrickson rear, 20K front, 370 HP ISM Cummins, 18 sp Fuller, 140K miles, plow & wing, \$41,995



1982 FWD Plow Truck 300 Cummins, plow, wing, and sander, \$10,995



1985 Ford 8000 w/ 3208 CAT diesel, only 20K miles, 1,000 GPM pump, \$6,995



No Snow Special! IH 2574's Starting @ \$5,995



Bobcat 553 Skid Steer with snowblower, bucket and forks, 748 hours, \$11,995



1986 Paystar 5000 AWD, Double wing, includes plow, pre emissions, \$12,500



2007 JOHN DEERE 744J. VERY GOOD RUBBER, RIDE CONTROL, LIKE NEW BUCKET, NEEDS NOTHING, VERY GOOD OPERATING MACHINE, 26,000 HRS., \$68,500. 802-464-2637



FUEL STATION. 1K gallon tank w/containment, fill warning system, 120 VT pump, meter, filter system, roof, 800-464-0573, www.WestsideTruckEquipment.com

Snow & Salt Will Be Arriving Soon
ARE YOU READY?
CALL 800.532.2306

Units in Stock For Immediate Delivery!

RENT to Own \$1.00 and Buy Back Program



ALL STAINLESS STEEL FRAME!
 RE1330SS-W4-TD/AR
 3000 PSI @ 3GPM W/Auto Start & Stop

Large Parts Inventory. We Can Ship it or Hand Deliver!
 email: parts@resteam.com

At Your Location Service/Repairs email: service@resteam.com

Showroom in Tax Free NH
 1401 Mammoth Rd / Pelham, NH 03076
 800-532-2306 or email: sales@resteam.com

www.resteam.com Site Under Construction



Mention This Ad Get 10% Off Your Entire Parts Order!



203-234-7788
 1037 Middletown Ave. (Rt. 17)
 Northford, CT



2016 ATC All Aluminum ARV Toy Hauler 7' x 20', 3 season living package, #GE202604



Western Plow & Sander in stock now, Sales, Service, & Parts



2002 Eager Beaver 20 Ton Tag Along 8'6" x 24', spring assist ramps, \$8,995



2014 Big Tex Dump Trailer 6'11" x 14', combo gate, 7' pull out ladder ramps, #E5326720, \$7,250



CM Truck Beds Several sizes in stock- single rear wheel or dually, Chevy, Dodge or Ford.



2016 Mission V-Nose Construction Trailer 7' 16", rear stowable ramp kit, GVW 7,000 lb, #GW062668

www.thetrailerdepot.com

We'll Hook You Up
 WE DO FEDERAL INSPECTIONS!

ANDERSON MOTORS INC.



BLUE BIRD BUS SALES OF NEW ENGLAND

*** YOUR EXCLUSIVE VOLVO TRUCK DEALER ***



NEW VOLVO TRACTOR TRAILER COMBO, COMPLETE PACKAGE, CUSTOMIZE YOUR SPECIFICATION.

VOLVO POWER



2016 VOLVO VHD64FT200 D13-475HP., 8LL TRANS, 46K T-RIDE. #150158

*** NEW ENGLAND'S LARGEST USED GMC BOX TRUCK DEALER ***



STARTING AT \$11,990



2009-2011 GMC BOX TRUCKS 16' DUAL REAR WHEEL L & SINGLE REAR WHEEL * OVER 20 UNITS AVAILABLE *



2008 VOLVO VT64T800 D16-500HP., 18SPD., 14,600 FRONT/ 46,000# REAR, AIR-RIDE. #150032A



2016 VOLVO VHD64FT200, D13-475 HP., 8LL TRANS, 46K T-RIDE. #150157



**2015 MICRO BIRD 14 PASSENGER COMMERCIAL BUS. #150016
2016 MFSAB IN STOCK !**



2016 VOLVO VNM64T200 D13-435HP., 10SPD. REGIONAL HAUL TRACKER. #150082



2016 26' RHODES STEEL DUMP, 70,000#, SINGLE POINT, HIGH-LIFT GATE.



(5) 2012 VOLVO VNL64T670 D13 VOLVO POWER, 280K - 350K MILES, EXTREMELY GOOD CONDITION.

401-434-5900

WWW.ANDERSONMOTORS.COM

**EMAIL • SALES@ANDERSONMOTORS.COM
170 AMARAL STREET • EAST PROVIDENCE, RI 02915
HAMBLAMOS ESPAÑOL**



NEW TORWEL HEAVY DUTY SNOW PUSHERS
8' (2.5 YARD) & 10' (3.1 YARD),
 all steel, 866-559-4875 X11



24' VAN BODY, BEEN INSULATED INCLUDING SIDE WALL VENTS. 401-434-5900



2002 FORD F550 DUMP TRUCK. 4WD, 7.3 turbo diesel, auto, lockout hubs, all season dump body w/ built-in sander, 45K orig miles, 17,900 GVW, cab & chassis good, heavy rust on dump bed, runs excellent, \$10,500. Wthy, CT 203-232-0921



PRE-OWNED 2015 FORD TRANSIT 250 CUTAWAY W/ READING ALUM.
 SERVICE BODY, 768 MILES, PW/PL, HEATED MIRRORS, LIMITED SLIP, 9,000# GVWR, COMPARTMENTS HAVE POWER LOCKS & ARE ILLUMINATED, 3-BOW LADDER RACKS, WON'T LAST LONG. CALL TIM DUFFY 781-267-5057



CAT H160 HAMMER. Fresh \$15,000 repac from CAT, about 40 hrs on tool. Excellent working condition and low hours, \$69,900 OBO. Tom, 603-986-4945



1990 INTERNATIONAL 4900. DT466 WITH FRONT AND SIDE PLOW, MANUAL TRANSMISSION. EVERYTHING WORKS, SALE PRICE \$6,990. 603-382-1555



RPM TECH LOADER MOUNTED SNOW BLOWERS, Londonderry, NH, 800-458-3867



1995 FORD L8000 DUMP. 8.3 Cummins, 5 spd, A/B, 33K GVW, good rubber, 75K miles, rust-free frame, plow frame, central hyd., sander controls, 10' 8 yd dump body, 3 chutes, pintle w/air to rear, runs well. 800-464-0573, www.WestsideTruckEquipment.com



2008 MITSUBISHI FUSO FE 180, 4 CYL., TURBO DIESEL, AUTO, 109K MILES, 16' BOX W/ 2000# LIFT-GATE, 14,500 GVW. \$17,995 401-944-5200



(2) 24' STECO DUMP TRAILERS. '01, & '02- Steel tubs, Spring suspension, Spoke wheels, Brakes and tires 50%, Flip & go canvas, good floors. \$10,500 each. Rich, 617-515-4433



PICK UP BEDS LONG BED, Short bed, DRW, SRW, tailgates, bumpers, 866-559-4875 X11



2005 FORD F350. Diesel, auto, crew cab, 4x4, 6 ltr orig. engine, new battery, starter & tires. Perfect tan lthr interior. Bought new, 1 owner. 116K hwy miles. Never plowed, No accidents. Excellent cond. Never had any issues, \$18,500. 508-325-3119



231 Sheep Davis Road,
 Concord, NH 03301
 603-225-6621
www.beauregardequip.com



Gorilla GXS70
 Hammer for Skid Steer, 750 lb Class,
\$9750



Gorilla GXS75
 Hammer for Backhoe/Excavator, 1000 lb Class,
\$11,500



Gorilla GXS135
 Hammer for Large Excavators, 5000 lb Class, **\$35,500**



ANTIQUE JOHN DEERE 50 LIKE NEW,
 \$3,500. 860-928-5748.

NUTMEG INTERNATIONAL TRUCKS

Franklin CT Hartford CT North Haven CT W. Springfield MA Torrington CT



Over 30 Quality New To You Pre Owned Trucks in Stock

Call Mike McDonald 860-308-6599

Check Out Our Entire Inventory At www.nutmegtrucks.com

All Of Our Retail Trucks Pass A Thorough Inspection & DOT. Ready To Work For You Now!



SUPER CLEAN DUMP

2007 Isuzu NPR Dump: 2007 NPRHD, 108k miles, Diesel, Auto, 10' dump body, sand blasted and painted body, # 10411, \$26,900



RUNS STRONG

1994 Ford L8000 w/Ford FD 1460 8.3L Diesel, 250 HP, Fuller 8LL, 35k GVW, Plow Frame, Dump Body, Runs and drives nice, \$7,500 AS IS



Under CDL Hook Lift

2009 IH 4300, MaxDT, Allison Auto, UNDER CDL, 25999 GVW, Air Brakes, 10k & 22k Axles HD, New Swap Loader 18,000lbs Hook Lift Sys, Adjust Hook Height, Ready to Roll, # 10343, Price \$69,900



Auto & New Dump Body

ONLY 146K

2009 IH 4300, Under CDL 25999 GVW, DT466, Allison Auto Trans, Big Axles 10k & 22k, Only 146K, Brand New 10' Dump Body, cover, pintle hook & plate, Super Clean, # 10350, \$49,900



Blow Out Price

1999 Ford F550, V10 Triton Gas, auto, 171k Miles, Rebuilt Eng, Tranny & Boom. 32' Telsta Boom, Bucket truck, everything works, \$7,900

ROOF SNOW REMOVAL WITHOUT STEPPING FOOT ON THAT SLIPPERY ROOF WITH A BUCKET TRUCK
NO REASONABLE OFFER REFUSED



Blow Out Price

2001 Ford E350 Bucket Truck, Gas Triton V8, Auto, 191K Miles, Telsta A28D Boom, Everything works, #10352, \$4,900

All Isuzu Box Trucks On Sale, No Reasonable Offer Refused



18' Van

2014 Isuzu NPRHD, Diesel, Auto, 92k Miles, 18' Van, Like New, #10450, \$31,900



Low Mi/ Liftgate

2009 Isuzu NPR, Gas Engine, Auto Trans, ONLY 80K Miles, 12000 GVW, 14' Van Body with Lift Gate, Very Clean Truck, #10337, \$26,900



ONLY 1 LEFT

2011 Isuzu NPRHD, Diesel, Auto, Miles 99k, Looks like new truck, 16' Van w/ walk ramp. Two to choose from, super clean! #10300, \$32,900.



Several In Stock

UNDER CDL

Several 2006-2009 Isuzu NPR Chassis & Box Trucks in stock, both 12000 & 14500 GVW, Both Gas and Diesel, Very Clean ready to go! Call for Specs and Pricing!



Diesel/ Auto

2008 Isuzu NPR, Diesel, Auto, 74K Miles, NEW INJECTOR WORK AND PUMP WORK, 16' Van with Lift Gate, #10302, \$31,900

ASK ABOUT NUTMEG'S NO CHARGE 120 DAY USED TRUCK WARRANTY!



Auto 26' Van

Several 2012 IH 4300's, MaxDT 230HP, Allison RDS2500 with PTO Provision, Low Miles 120k to 130k, 26' Van Bodies, Very Clean, \$39,900



Lo Pro

2006 IH 4300 Low Pro, DT466 210HP, Fuller 6 sp, Under CDL, 222k miles, Low Pro tires and wheels, 24' van w/ take out walk ramp, very clean and nice shape, Call for price



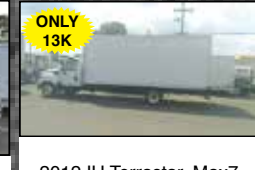
Air Ride

2007 IH 4300, DT466 Power, Allison Auto Trans, AIR RIDE, Air Brakes, 26' Van Body, walk ramp, 214k Miles, Very Clean, #10422, \$26,900



Auto/Low Miles

2011 IH 4300, MaxDT 215HP, Allison RDS2100 Auto, Air Brakes, 24' Van with Gate, Southern Rust Free Truck, #10428, \$39,900.



ONLY 13K

2012 IH Terrastar, Max7 300HP, Allison 1000RDS Auto, ONLY 13K MILES, 17000 GVW, 20' Van body with ramp, Rust Free TX Truck, #10429, \$44,900



Dump/Oil Chassis

Group of 2005 IH 4400 chassis, Both CDL & Under CDL, Low miles 112k to 149k, Allison Auto Trans PTO acceptable port, Southern trucks, very clean rust free, Call for pricing



Auto/Tandem

2012 IH 4400 Tandem, Max 9 - 315HP, Allison Auto 3000HS, 14 & 40 Axles, Spring Susp, 27" Wheel Base, Only 178K Miles. #JTS691, \$49,800



3 IN STOCK

(3) 2011 IH 4300, MaxDT 230HP, Allison 2500 RDS Auto Trans w/ PTO Provision, AIR BRAKES & AIR RIDE SUSP, Under CDL, 102k, 146k & 162k Miles, 24' Van Body, 102" Wide, 3000lbs tuck away lift gate, 10' roll up side door, Call for pricing



HEAVY DUTY

1999 Mack CH613 Mack E7-427 Engine 460HP, Mack 13spd, Miles 800's, 48K Rears, 12500 fronts, Wet System, Very Clean Units, \$22,900



NUTMEG INTERNATIONAL TRUCKS



Franklin CT
Hartford CT
North Haven CT
W. Springfield MA
Torrington CT

Locations in: Hartford (860)249-8635, North Haven (203)239-0770,
Franklin (860)886-0593, Torrington (860)489-3119, West Springfield, MA (413)732-2191

DIESEL TECHNICIAN POSITIONS

POSITIONS AVAILABLE AT ALL LOCATIONS

PREREQUISITES:

EXPERIENCE IN TRUCK REPAIR, TOOLS, MOTIVATION TO ADVANCE IN THE TRUCK SERVICE INDUSTRY!

NUTMEG IS OFFERING:

EXCELLENT PAY STRUCTURE, 401K, HEALTH INSURANCE, UNIFORMS, VACATION PLAN, PAID TECHNICAL TRAINING TO FURTHER YOUR CAREER!

APPLICATIONS AVAILABLE AT ALL LOCATIONS AND AT **WWW.NUTMEGTRUCKS.COM**

CONTACT **wsservice@nutmegtrucks.com** TO INQUIRE






TRADE KOMATSU PC400LC,
FOR A 30,000 LB. TO 50,000 LB.
EXCAVATOR WITH THUMB, IN GOOD
CONDITION. THIS 400 HAS ONLY
6500 HRS WITH A REBUILT CUMMINS
ENGINE ONLY 800 HRS AGO. ALL PINS ARE
TIGHT, CYLINDERS IN EXCELLENT COND.,
BUCKET IN VERY GOOD SHAPE. SHEET
METAL PERFECT. VALUE ABOUT
\$30,000 +/- OBO. BOTTOM FAIR TO
GOOD. DARTMOUTH, MA 508-995-8067



**2009 CHEVY SILVERADO 2500HD SNOW
PLOW,** 4x4, V8, gas, automatic, #3025, \$22,995,
www.centermotorstrucks.com, 866-556-3177

**DOUBLE-
WALLED
FUEL
TRANSFER
TANK.**
210 Gallon,
120 volt pump
with hose, lifting
eyes, \$3,800.
401-855-1051



ACKERMAN/VOLVO FROST TOOTH.
Made for quick coupler, came off an H10, approx.
44" from tip of tooth to plate, 17.5" across, \$2200 OBO.
Call for details, 203-948-3400



BLAST HOODS.
FULLY PADDED INTERIOR, MULTI-LAYERS
OF SOUND DEADENING FOAM, TEAR OFF
LENS, NIOSH APPROVED TYPE CE
SUPPLIED AIR RESPIRATOR.
RAPID PREP 877-529-2124

**KUBOTA L35. 4X4 DIESEL,
BACKHOE, FRONT FORKS AND
BUCKET, GOOD SHAPE, NICE
MACHINE, 1700 HOURS.
ASKING \$16,000. NORWALK, CT
203-858-3516, 203-852-1166**



NORTHLAND JCB

888-485-0383
NorthlandJCB.com



2012 JCB 531-70 Turbo
Cab, Heat, A/C, Qfit Coupler,
Forks and Bucket - \$86,500 - 34256



JCB JS145 Excavator
With Hydraulic Thumb & Blade
Call For Price



2013 JCB 300W - Hours 406
Skid Steer - \$52,900 - 38651



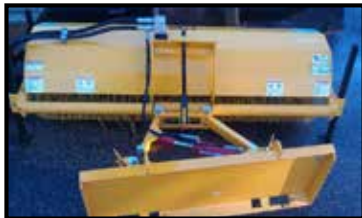
SnoBandit -8ft. Rubber/Steel edge
skid steer pusher
\$2,295.00



2004 JCB 8052
With 24" digging bucket
\$26,900 - 44830



Vibroscreen SCM 40
Unit#39396 Hours - 340
2" top screens & 3/4"x 5" slotted
bottom screens - \$46,500 - 39396



72" Poly Brush Hydraulic Angle
Broom to Fit Skid Steers
Standard Flow - \$4,820 - 27382



2007 JCB 520-50
Hours 1,944 - \$39,800
52797



SnoBandit -12ft.
Rubber/Steel edge lip
mounted backhoe pusher
\$3,595.00

Sales - Rental - Service - Parts

Wilmington, MA - Middleboro, MA - Shrewsbury, MA

Concord, NH - Lewiston, ME

SURE TRAC 82"X12' DUMP TRAILER HEAVY DUTY, Low Profile, D-rings, LED Lights, Ramps, Year End Sale \$6,299, Belchertown, MA 413-478-9790



1998 CHEVY C3500, DIESEL, 2WD, STAKE BODY, LOW MILES, DUAL FUEL TANKS, 15,000 GVW, BENCH SEAT, ONE OWNER. \$5,000 • 508-697-6779

THOMPSON TRACTOR LLC.
860-963-1918
 "A DL HOLKE COMPANY"
 56 RIVERSIDE DRIVE THOMPSON, CT
 DAVE'S CELL 508-864-8874
 THOMPSONTRACTORLLC.COM

ALWAYS A BUYER FOR CLEAN LATE MODEL EQUIPMENT !!



2012 DEERE 75-D, 409 HOURS, BLADE COUPLER-AUX, HYD-3 BUCKETS, FACTORY WARRANTY, **AS NEW \$79,500**



NEW 2015 JCB 407 LOADER, 4HRS., WITH QUICK COUPLER, BUCKETS & FORKS. **\$71,500**

INVENTORY AT * WWW.THOMPSONTRACTORLLC.COM

GREENER BLAST - HIGH PERFORMANCE SLURRY BLASTING SYSTEM, BUILT FOR MAXIMUM PRODUCTION, CAPABLE OF DRIVE NOZZLES FROM #6 TO #12, WHILE BLASTING AT PRESSURES 15PSI TO 100PSI. VERSATILITY FOR ANY JOB. CALL RAPID PREP 877-529-2124



ECONOLINE 10 TON DUAL TANDEM TRAILER. Electric Brakes, oil bath, axles 25,500 GVW, 20' flat, 5' dove, \$8,399. Belchertown, MA, 413-478-9790

L&K TRUCK BODY, INC.

258 Dover Road • Chichester, New Hampshire 03258

603-798-5500

NEW ENGLAND MICKEY BODY DISTRIBUTOR



2011 Isuzu NPR 14' Morgan Refrig Van. 72,000 Miles, V300 Thermo King, Roll up Rear Door, Super Clean, \$29,995



NO RUST-SOUTHERN TRUCK
 2001 GM 8500 21' Steel Flatbed. Moffit Kit, CAT 300 Hp, 8LL, Double Frame, 13,500 lb Frt Axle, 40,000 lb on Hendrickson, 209K Miles, \$19,995



IN BOUND - New Kidron Insulated Van Bodies, 12' - 24'



2007 Chevy 12 Ft Refrigerated Van. Carrier S30, Diesel, Auto., Inspected, \$18,995



2004 IH 4200 14 Ft Refrigerated Van. Thermo King Unit, 54,000 Miles, Diesel, Auto., 26,000 GVW, \$14,995



2007 IH DT466, 33,000 GVW, 6 Spd, 260K Miles, \$24,995 or w/out Body \$17,995



2000 IH 4700 Beverage Body. DT466, Auto., \$9,995 or C&C \$6995



2002 Mitsu Fuso 14' Refrigerated Van. 14,500 GCW, Diesel, Standard, 185K Miles, Thermo King, \$8,995.



2007 Mitsu Fuso FE. Runs Well Will Pass Inspection, High Miles \$4,995



2009 Isuzu C&C. Blown Engine, Good Cab. Transmission, & Tires, \$4,995



2007 IH 4300 C&C. Needs Work, High Mileage, 33,000 GVW, Automatic, \$6,995



1999 IH 4700 C&C. DT466, Stick, Under CDL, \$2,995

WE STOCK

MICKEY Van Bodies From 12'-24' & KIDRON Insulated Van Bodies 12' Thru 22'



e.w.sleeper

Serving construction contractors and municipalities since 1964

391 Loudon Road, Concord, New Hampshire 03301
603.225.3361 800.358.6007 Fax 603.225.4918

**SPECIAL 0% ON
SELECT MODELS**

**RENTAL PURCHASE
PROGRAMS, LEASE
PROGRAMS AVAILABLE**



L&L 85 Screener, John Deere engine, 1321 hours, stk#CS2314, \$28,000.



2014 Vibrotech Vibroscreen SCM27, 182 hours, stk#V11423, \$28,000., or rent



2015 Vibrotech Vibroscreen SCM75, 119" x 90" deck, 6 yd. cap., 70 hours, stk#V12278, Buy or rent



2012 Vibrotech Vibroscreen SCM115T Trommel Screener, 80HP Perkins, 12'3" x 48" trommel, 1300 hours, stk#V11101, \$88,000., or rent



2010 DOOSAN DL200, snow fighter!, bias ply 20.5, 1938 hrs, stk#CS2479, \$82,000.



SNOW FIGHTER

2002 Komatsu WA380-5L, newer rubber, strong & tight, enclosed ROPS, clean interior, 12K hours, ready to work! Stk#UL2471, \$48,000.



2008 Yanmar V1075-A, hydraulic thumb, coupler, dual acting hydraulics, heat, AC, 2687 hours, stk#UE1904, \$64,900.



2003 Hyundai Robex 210 LC-7, one owner, hyd. Rockland thumb, 7,808 hours, tight, \$59,000.



2008 Kobelco SK210 LC-8 Acera, HD Esco bucket, AC, 2603 hours, 51K machine, stk#CS2300, \$75,000.



2007 Yanmar V1035-3, clean, cab, blade, hyd. thumb, rubber tracks, 2145 hours, stk#CS1314, \$32,000.



1997 Komatsu WA250-1 Loader, good rubber, runs strong, good snow fighter, 11K hrs, stk#UL2472, \$29,000.



1996 Bobcat 763 Skid Steer, everything works, 5,727 hrs, 46HP, s/n#512219270, \$11,000.



2006 CAT TH360B Telehandler, Perkins 4 cyl. canopy, self levelling, 6600# cap., 3100 hours, clean, stk#CS2311, \$32,000.

www.ewsleeper.com

SPECIAL 0% ON
SELECT MODELS



e.w.sleeper

RENTAL PURCHASE
PROGRAMS, LEASE
PROGRAMS AVAILABLE

Serving construction contractors and municipalities since 1964

391 Loudon Road, Concord, New Hampshire 03301

603.225.3361 800.358.6007 Fax 603.225.4918

LARGE SELECTION OF SNOW & ICE EQUIPMENT IN STOCK! CALL WITH YOUR NEEDS!



HUGE INVENTORY OF FISHER POLYCASTER SANDERS IN STOCK!



LARGE SELECTION OF HI-WAY SPREADERS IN STOCK!



PRO-TECH SNOW PUSHERS IN STOCK!



Ingersoll-Rand SD25 Roller, 718 hours, clean, ready to work, stk#CS2444, \$25,000.



2010 GEHL CTL65 Track Skid Steer, only 710 hrs, 67HP, very clean, stk#UZ2431, \$26,000.



2008 Peterbilt 386, Cummins 550HP, 12K F/A, 46K R/A, 18 spd, double frame, 340K miles, \$59,000.



1996 Kawasaki 65Z IV, former town loader, 12k hours, newer paint, solid, ser#65J20405, \$40,000.



1990 CAT D3C, like new, open ROPS, 6,952 hrs, good runner, s/n#3RF00420, \$19,900.



2007 Kawasaki 70 TMV-2, 174HP, 3.2 yd. bucket, quick coupler, 5814 hours, tight, stk#CS2117, \$85,000.



1979 Hanomag 44C, 2.5 yd, ROPS, new rear end, drive shaft, main hydro pump, block heater, valve cover, more, \$14,900.



2013 Kawasaki 65ZV-2, 149HP, 933 hours, 3rd spool, ride control, radials, JRB hyd coupler, stk#CS2330, \$139,000.



2011 CAT 304D CR Excavator, QC, thumb, AC, heat, blade, rubber track, 1K hours, stk#CS2448, \$48,000.



2011 CAT 305D CR Excavator, only 412 hours, AC, rubber, blade, thumb, coupler, like new, stk#CS2449, \$59,900.



2005 John Deere 450 LC, u/c very good, 50" HD bucket, new main pump, tight, 13K hours, stk#CS2285, \$85,000.



2003 John Deere 450H LT, one owner, 1495 hrs, AC, heat, radio, enclosed ROPS, stk#CS2412, \$49,900.

www.ewsleeper.com



2007 DODGE RAM 3500 STS, 5.7L HEMI, 4WD, DUALY, A/C, 6 TOOL BOXES, PINTLE HITCH REC., WELDERS RACK, 116K MILES. \$14,999 • 508-697-6779

2007 BOBCAT T-190 TRACK LOADER 2630HRS, two new tracks, two new track motors, \$25,000, Westbrook, CT, 860-669-2832



FLINK 10' 7 YARD STEEL SANDER. Complete w/calcium system, needs some TLC but fixable. Also 10' 5.5 yd SS hydraulic for under CDL truck, PA plow available, too, 800-464-0573, www.WestsideTruck-Equipment.com



1974 P & H R-150 15 TON ROUGH TERRAIN MOBILE CRANE, \$15,000, 800-378-0342



MAILHOT DUMP CYLINDERS NEW AND USED, pin to pin, Call with your specs, 860-984-8989

BOBCAT BACKHOE ATTACHMENT, for Bobcat skid steer, hardly used, excellent shape, \$3500. Norwalk, CT 203-852-1166, 203-858-3516



2001 FREIGHTLINER FL70, HOOK LIFT, 20K LB. AMERICAN LIFT, 6 YRS. OLD, 36" HOOK HEIGHT, 6 SPD., NEW CLUTCH, CUMMINS, 241K MILES, GOOD RUNNING TRUCK, WORKS DAILY, 26,000 GVW, NO CDL, REQUIRED AIR BRAKES, AIR SUSPENSION, \$25,000. 781-389-1045



DOWNEASTER TRAILERS ON CLEARANCE!!! CALL FOR PRICING! WINCHESTER, NH 603-239-7008



For Sale, Rent, Rent to own.

5 X 8', and 20 and 40' Storage Containers Available.





RENTALS • RENTALS • RENTALS





BIG SAVINGS VS SELF STORAGE. CALL FOR INFO

Massachusetts Certified Women-owned Business



2004 FORD F-350 SD XL, V-8, 5.4L AUTO, 173,564 MILES. \$7,995 401-944-5200



2002 INTERNATIONAL 4400 OIL TRUCK. Auto trans, 300K miles, Trans Tech 2-compartment aluminum tank, top load, Bridgestone tires @ 80%, Runs excellent, fleet maintained, \$48,000. 860-806-7325

2009 INTERNATIONAL 4300, 24' BOX TRUCK, DIESEL, AUTOMATIC. 401-434-5900



COLONIAL

CHEVROLET OF ACTON • CALL US 978-631-1211



LET US HELP YOU GET YOUR NEXT TRUCK



SAVE OVER \$8,000

BRAND NEW SILVERADO CREW CAB
 2014 Silverado 1500 Crew Cab, cloth seats, 4.3 V6, air conditioning, power windows/door locks, AM/FM radio, cruise control and more
 stk#14984 MSRP \$34,795
SALE PRICE \$26,604



SALE PRICE \$34,029

2015 Chevrolet Express 12' Box Van
 12' Bay Bridge Box, cloth seats, rear locking differential, 6.0 V8, AM/FM radio, air conditioning, dual rear wheels, bulkhead door, tie down rings and more
 stk#15187 MSRP \$41,620



SALE PRICE \$29,986

2014 Express Chevrolet 10' Box Van
 10' Bay Bridge Box Van, cloth seats, 6.0 V8, locking rear differential, AM/FM radio, air conditioning, bulkhead door, single rear wheels, tie down rings and more. stk#14990 MSRP \$40,920



SALE PRICE \$40,581

2015 Chevrolet Express 10' DuraCube
 10' Dejana DuraCube body with exterior tool boxes both sides, ladder racks, single rear wheel, air conditioning, CD radio, locking rear differential and more
 stk#15117 MSRP \$47,395



SAVE OVER \$13,300

BRAND NEW 2015 Chevrolet Silverado Rocky Ridge Alpine Edition. Crew Cab, 4X4, Z-71 Off Road, 4" suspension lift, All Star Package, 5.3 V8, 35" A/T tires, navigation, heated seats, MyLink stereo, power running boards and more. stk#15330 MSRP \$63,335
SALE PRICE \$49,999



SAVE OVER \$7,200

BRAND NEW CHEVROLET CAMARO SS RS
 2014 Chevrolet Camaro 2SS RS, 6.2 V8, 6 speed manual, leather heated seats, navigation, dual mode exhaust, power sun roof and more
 stk#14269 MSRP \$42,650
SALE PRICE \$35,373



DURAMAX DIESEL

2013 Chevrolet Silverado Ext Cab LTZ 4x4, 6.6 Duramax Diesel, dual rear wheels, navigation, leather heated seats, Allison transmission and more
#8896 ONLY \$44,985



DURAMAX DIESEL

2011 GMC Sierra 3500 HD Denali Crew Cab 4x4, dual rear wheels, Denali package, 6.6 Duramax, Allison trans, navigation, power roof, DVD, leather heated/cooled seats, chrome steps and a whole lot more
 stk#8885 ONLY \$43,995

171 Great Road • Acton, MA 01720



www.ColonialChevyTruck.com



COME SEE YOUR DREAM TRUCK, BEFORE ITS GONE

NEW VEHICLE SALE PRICES INCLUDE IN STOCK DISCOUNT, ALL APPLICABLE REBATES AND INCENTIVES, TRADE ASSIST REBATE (WITH QUALIFYING TRADE), SALE ENDS 1/31/2016

GENERAL TRUCK CENTER INC.

Selling Cab Overs Since 1961!!

109 Lindberg ave. Methuen-MA 01844 • www.generaltruckcenter.com

ASK US HOW WE CAN LOCK IN YOUR MAINTENANCE COSTS FOR 6 YEARS WITH PSMP

978-686-1800

603-560-0668
Nights and Weekends



NEW 2016 HINO 195 CAB OVER, STK#8236. \$45,900.



(4) 2016 HINO 268A'S, AIR BRAKES, AIR RIDE, NEW 24FT. MORGAN VAN BODY, 102X103, STK#8194. \$79,900.EACH.



2012 Hino 268A. Automatic, 25,950 GVW, Air Brakes, 26'X103"X102" Supreme Van, Slate Lined, 2 Rows E-Track, Walto Aluminum Tuck-Away Lift Gate, #14674, \$53,500



2013 ISUZU NQR CHASSIS, 17,950 GVW, DIESEL, 150" W/ BASE, 159K MILES, STK#14717. \$29,900.



2008 ISUZU NPR-HD, DIESEL, 14,500 GVW, 16' VAN BODY WITH LIFT GATE, & E-TRACK, 109K MILES, STK#14653 \$29,500.



2010 ISUZU NQR, DIESEL, 17,950 GVW, MORGAN 16' VAN BODY WITH SLIDE OUT RAMP, STK#14722. \$27,500.



2011 Isuzu NQR Diesel, 17,950 GVW, 18' KOLDKING Body, Carrier 40X, 159K Miles, #14692, \$33,500. 24 mos/50,000 Miles Isuzu Gold Star Warranty



2011 Isuzu NPR-HD diesel chassis, 150" W/B, Fleet Trade w/ Priority Service (PSMP) 84,000 miles, Would take 16' - 18' body Stk#14645 \$28,500



2011 Isuzu NQR 18' Refrigerated Body, 17,950 GVW, Diesel, 143K Miles, Carrier 40X, #14693, \$34,750. 24 mos/50,000 Miles Isuzu Gold Star Warranty



2014 ISUZU GAS, 16' MORGAN VAN BODY WITH SLIDE OUT WALK RAMP, 14,500 GVW, LIKE NEW, 37K MILES, STK#14719. \$37,500.



2009 Chevy Cube w/12' Alum. Body, Tommy rail lift gate, 10,000# GVW, only 59k miles, stk#14551, \$25,900. \$23,900



2012 ISUZU NQR CHASSIS, 17,950 GVW, AUTO, STK#14737. \$25,500.



2011/2012 16' CUBE VANS, \$17,900 AND UP, CALL!!!!



2007 GMC W5500, 18' REEFER TRUCK \$9,500.



2013 ISUZU NQR DIESEL, 17,950 GVW, 16' SUPREME VAN BODY WITH PULL OUT WALK RAMP, 84K MILES, STK#14720. \$39,900.



FRESH BATCH OF 12 Ft Single Rear Wheel GMC Hi-Cube Vans. 2011 & 2010 Starting @ \$16,900 On a 2010 #14680



2009 CHEVY W5500 DIESEL, 167K MILES, 22' ABC VAN BODY, STK#14701. \$27,500.



2008 ISUZU NPR HD DIESEL, 14500 GVW, 16FT. VAN BODY WITH TUCKA WAY LIFT GATE, OFF LEASE COMPLETE PSMP TRUCK, MAINTAINED!!! STK#14754. \$23,500.



2012 ISUZU NQR, 17950 GVW, DIESEL, 109" WB, CHASSIS ONLY STK#14760. \$24,500.



2011 ISUZU NPR HD DIESEL, 14,500 GVW, CHASSIS ONLY, 150" WB, 150K MILES, STK#14763. \$18,500.

Dealer is not responsible for errors in price, or in description of vehicles, by the editors of Truck Post & Equipment



USED BOX & FLATBED BODIES 12 TO 29 FOOT. 60 To Choose. Prices Starting @ \$500, 800-378-0342



2003 DODGE RAM 3500 CUMMINS DIESEL, quad cab, 4x4, nice tires & wheel package, #3035, \$24,995, www.centermotorstrucks.com, 866-556-3177



1985 INTERNATIONAL RAMP TRUCK. DT 466 engine, runs excellent w/ 5-speed manual trans., tires and wheels are recent with full tread, \$5500. Josh, 617-921-8883

RI TRUCK & TRAILER

20 Aster Street • West Warwick

401-821-3109

* SNOW PLOWS * SANDERS * TRAILERS * ACCESSORIES *

SURE-TRAC RI ONLY AUTHORIZED LARK DEALER



WINTER BLOW OUT SALE !



On Sale Now **\$5,895**

2016 SURE-TRAC 72" X 12' LOW-PRO DUMP TRAILER, 10K GVW, SIDE EXT. W/ RAMP, POWER UP / DOWN.



On Sale Now **\$2,895**

2016 SURE-TRAC 5X10 UTILITY DUMP, 3.5K GVW, POWER UP/ DOWN, REMOVABLE FRONT & REAR GATES. MSRP \$3,495



On Sale Now **\$4,195**

2015 LARK 7X14 ENCLOSED TRAILER, CHARCOAL, RAMP DOOR, 6' INT. HEIGHT, W/ SPARE TIRE, SLIGHTLY USED, STILL UNDER WARRANTY, MSRP \$5,095



FISHER PLOWS NEW & USED IN STOCK !!

FINANCING AVAILABLE !

SALES & SERVICE • WWW.RITRUCKANDTRAILER.COM



All machines have the option to rent with an operator

**Equipment LLC
RT.9 LEICESTER, MA**

**Call Us Today
508.363.1889 • 508.304.5600**



SALE PRICE \$57,000

**John Deere 250D Dump Truck.
\$2,200 PER WEEK,
\$6,900 PER MONTH.**



SALE PRICE \$142,000

**VOLVO EC360CL, WITH BUCKET \$2,700 PER WEEK,
\$8,000 PER MONTH.
WITH HAMMER \$4,000 PER WEEK,
\$13,000 PER MONTH.**



SALE PRICE \$87,000

**CATERPILLAR D6N,
\$2,500 PER WEEK,
\$7,000 PER MONTH.**

www.curtisequipmentrentals.com



TASCA TRUCK CENTER

Dan Gauthier Truck Sales MGR.

800-476-0788



OVER 100 PLOW TRUCKS !!



WWW.TASCAFORDTRUCK.COM



THIS IS JUST THE BEGINNING ! OVER 150 UP-FITTED TRUCKS IN STOCK.

*** WE DELIVER TO ALL N.E. STATES & BEYOND.**



WWW.TASCAFORDTRUCK.COM



THIS IS JUST THE BEGINNING ! OVER 150 UP-FITTED TRUCKS IN STOCK.

*** WE DELIVER TO ALL N.E. STATES & BEYOND.**

**OVER 220
TRUCKS &
VANS**

AUTO TOWNE

**MORE
INVENTORY!
2 LOTS!**

SPECIALIZED TRUCK & VAN SALES
TEL: (888) 857-2918



\$21,995

2015 RAM ProMaster 1500 Cargo Van, 3.6L V6, auto, PW, PL, AC, 8550 GVW, 46K miles, stk#7367, \$21,995.



\$14,995

2009 Chevrolet Express Cutaway Unicell Cube Van, 6.0L V8, auto, roll-up rear door, 107K miles, stk#7313, \$14,995.



\$19,995

2011 Chevrolet Express 3500 12-Passenger Van, 6.0L V8, auto, PW, PL, AC, 9600 GVW, 33K miles, stk#7365, \$19,995.



\$17,495

2011 GMC Sierra 2500HD Crew Cab 4WD, 6.0L V8, auto, AC, 9900 GVW, 159K miles, stk#7366, \$17,495.



PLOW

\$19,995

2009 Chevrolet K3500 Silverado Knapheide Utility, auto, AC, with plow, 114K miles, stk#7219, \$19,995.



\$16,995

2006 Chevrolet W3500 Box, Isuzu 6.0L gas, AC, ramp, barn doors, 63K miles, stk#7294, \$16,995.



\$16,995

2006 Chevrolet Silverado 3500 Reading Utility 4WD, 6.0L V8, 81K miles, stk#7311, \$16,995.



\$18,495

2012 Ford E350 15' Unicell Box, 5.4L V8, auto, walk ramp, roll-up rear door, 119K miles, stk#7262, \$18,495.



\$17,495

2012 GMC Sierra 1500 Ex Cab 4WD, 6.6' bed, 4.8L V8, auto, AC, ladder racks, 7K GVW, 95K miles, stk#7331, \$17,495.



\$26,995

19K MILES

2015 Ford Transit 250 Hi Roof Cargo Van, 3.7L V6, auto AC, PW, PL, 9K GVW, 19K miles, stk#7315, \$26,995.



\$21,995

2011 Ford E-350 Cutaway Box, 5.4L V8, auto, ramp, E-track, rear platform step, 78K miles, stk#7316, \$21,995.



\$15,995

LIFT GATE

2010 Ford E350 Cutaway Box, 5.4L V8, auto, PW, PL, Tommy Gate lift gate, 89K miles, stk#7350, \$15,995.



\$8,995

2011 Chevrolet HHR LS Panel SUV, 2.2L, FWD, 5 spd manual, PW, PL, AC, tool boxes/bins, 78K miles, stk#7354, \$8,995.



\$12,995

2011 Toyota Tacoma Reg Cab 4WD, 2.7L 4 cyl, auto, AC, 5100 GVW, 134K miles, gas saver! stk#7326, \$12,995.



\$24,995

2014 Chevrolet Express Cutaway Box, 4.8L V8, auto, E-track, 69K miles, stk#7263, \$24,995.

**80
CARGO
VANS**

402 & 500 BROCKTON AVE ABINGTON MA . 02351
WWW.AUTOTOWNE.COM
WE BUY TRUCKS, VANS AND ANY COMMERCIAL VEHICLES

DAVE'S ENTERPRISES
68 BRALEY RD.
EAST FREETOWN, MA 02717
508-726-0077



1994 FORD L7000 Louisville: Cummins Diesel, 6 speed, 26K GVW. Call for details. \$4,500



2008 CHEVY 28' Box Truck: Duramax Turbo Diesel, 7 speed, 26K GVW, 125K miles. Will separate. Call for details. \$16,500



2007 CHEVY 5500HD Cab Over: Isuzu diesel, automatic, nice truck. Give me a call. \$13,500



1988 MACK RD688SX: 350HP, 8LL, 58 rears, 24" rubber, call.



1988 MACK 688SX 15' Dump Body: 350HP, 8LL, 58 rears, 12x24 rubber, electric tarp system, call.



1989 MACK 686S 15' Aluminum Dump Body: 300HP, auto, 44 rears, call.



2004 INTERNATIONAL 26' Flatbed w/Moffitt: 20F/44R, 13 speed, call.



1980 MACK RD686: only 50K miles, 11' power angle plow, stainless steel calcium system, be ready! \$21,500.

508-328-8938

THE TRUCK STORE

**Mon-Fri 8:30-5pm
Saturday 8:30-4pm**

www.TruckStoreSales.com

1700 Broadway - Rte 138 – Raynham, MA • Take Exit 8 Off Rte 495, East Rte 138, On Your Left



2001 FREIGHTLINER 26' Moving Body. Diesel, Automatic, 100K miles. Air Ride, No CDL.



2001 AutoCar/Volvo 370 HP ISM Cummins, Allison auto., 58 Rears, Wet system, Double frame, 67K actual miles. With or without 14'-15' Dump Body



1999 Volvo Tri-Axel Dump Heavy-8LL, Detroit, 116K miles. Others coming in soon!



1999 MACK RD Septic Tanker. 18F/44R, 300H.P., standard, steel tank is in excellent condition.



MACK RD TANKER: Very nice. Call For Details



2007 International 4300 DT 466, Automatic, NON CDL. WE ALSO HAVE a 2005 100k miles



2006 International 7600: 25 yard McNeilus rubbish truck. Rust free Georgia peach. Cummins ISM, 18F/46R, only 98K miles.



100k Miles

2007 Kenworth T300 Thermo King TS200 Refer Body 330 CAT, Allison automatic, 12F/40R.



2007 FORD F550 6 yard rear load rubbish compactor. Diesel, automatic, A/C, ONLY 62k miles. please call for more details.



2004 GMC C8500: 10 yard stainless steel sander, 11' plow, Only 46K miles. 44 rears. Very nice.



2007 Mitsubishi/Sterling FE 180: Diesel, auto., 18K GVW, Clean. many bodies available.



(4) 2005 MACK Tractors: 460 H.P., 18 speed, air ride, wet system, Jake, 46k locking rears, 350 to 400K Miles, \$40,000 each. Also 1999 AutoCar available.



2009 Isuzu NPR Cab & Chassis. Diesel, Auto. We have van & refer. bodies available. Also 2011 Available



2002 FREIGHTLINER AIRPORT DEICER: only 2000 miles. Automatic. 4,000 stainless steel tank. 22F/58R.



2005 WORKHORSE: 18' Aluminum Body Step Van. Gas, Auto., 100k miles.



2005 KW T300: 250 HP CAT, Allison Automatic, P.T.O. acceptable. 33K GVW. Great for Dump or Tank.



2007 International 4300 Box Truck, DT466, auto, 25K miles, complete vacuum system, PTO, like new.



2012 GMC Reading Service body: gas, auto, Only 50K miles. Slight damage to right rear quarter. Call for details.



2003-2004 & 2007 MOFFET FORK LIFTS. Nice condition. Low hours.



2007 FREIGHTLINER DUMP BODY: Cummins diesel, Allison Automatic, 18F/46R. Only 72K miles. Southern truck. Nice.



2005 MACK GRANIT Heavy single Dump w/plow frame: 10' Aluminum dump body, 350 HP, 8LL. Only 80K miles! Other single axle dumps available.



2006 HEIL 25 yard Rubbish body. Excellent condition. Call for more details.

TRUCK BODIES: 10-26 FT. we have flatbeds, moving, refer, and dump bodies in stock. call for your needs.



2012 CHEVY 2500 Crew Cab 4x4 W/ Fisher V-Plow. call for details



2007 GMC C7500 Box Truck : Isuzu Diesel, Automatic, only 76k miles.

THERMAL ARC:
Pak 5XR Plasma Cutting System, S800 OBO, 401-486-0034




1999 INTERNATIONAL 4900. DT466, Allison auto, A/B, 35K GVW, 63K miles, 10' - 7 yd dump, 3 chutes, pintle, tarp, central hyd., sander controls, tilting plow frame, 109' RH complete wing setup, no front blade, work ready, 800 -464 -0573, www.WestsideTruckEquipment.com



2005 BOBCAT S150. Enclosed cab & heat, Bob tach, 68" bucket, Kubota diesel engine, high hours, smokes when 1st starts, foot controls, tires OK, recently serviced. Serious inquiries only, \$10,750. 860-250-0101

WANTED!!! MACK TRUCKS

**CAT, DEERE, BOBCAT EQUIP
IN ANY CONDITION
IMMEDIATE PAYMENT**



**CALL JOHNNY MACK
HARTFORD, CT 860-883-1186**

SNOWPLOWS! TAX FREE NEW HAMPSHIRE



888-982-9314
OPEN SATURDAYS!

Lang's Corner Garage

FACTORY AUTHORIZED FISHER DISTRIBUTOR
351 WALLIS RD., RYE NH

McDevitt Trucks Inc.

Manchester, NH
1 Mack Ave., Manchester, NH
1-866-403-5499

Tewksbury, MA
939 East St., Tewksbury, MA
1-800-370-7383
Lancaster, NH
19 Bridge St., Lancaster, NH
1-800-268-0065

An Employee Owned Company



END OF YEAR SPECIALS. NO REASONABLE OFFERS REFUSED!



2010 MACK CXU613, 380HP diesel, Allison, air ride, engine brake, AC, T/A, 12K F/A, 40K R/A, 440K miles, stk#11977, \$42,500.



2010 WESTERN STAR 4900FA Det 560HP, 18 Spd, Air Ride, 3.91 Ratio, 230" WB, 515K mi, Cond: Silver., Stk#:AT2659 \$77,500



(5) 2010 MACK CXU613, MP7 365HP, T/A, 12K F/A, 40K R/A, 168" WB, 460K miles, stk#11134, \$42,500. Also, Auto in stock.



2011 MACK CHU613 W/70" MID-ROOF SLEEPER, MP8 445HP diesel, Ultrashift, T/A, 12K F/A, 40K R/A, 324K miles, Ex-Mack Show Truck, stk#7291, \$74,500.



2012 MACK CXU613 48" SLEEPER, MP8 415HP diesel, engine brake, 12K F/A, 40K R/A, 348K miles, stk#: 18052, \$49,999. Also, 2010 in stock. Wholesale to the public prices.



2010 KENWORTH W900L Cummins 550 HP, 18 Spd, 3.91 Ratio, 247" WB, 490K mi, Cond: Silver. Stk#:263972 \$85,900

VIEW ALL OF OUR INVENTORY AT WWW.MCTRUCKS.COM



Patriot

Freightliner-Western Star





2016 Freightliner M2, 33 GVW, automatic, 350 HP, #FGX4993



Plow trucks arriving daily, starting at \$15,000. 1999-2010 models, call for details



2016 Freightliner 122SD, Detroit 600hp, 18 so, 46 rears, 54" sleeper, #FHA7837



2016 Western Star 4700 15' heavy duty dump, Detroit DD13, #WHE0488



2012 Freightliner Cascadia 72" hi rise slp, parksmart Remainder of Manufacture Engine Warranty #: TBJ4792



2016 Western Star 4700SF TRI AXLE Detroit power, Allison transmission, #WHE5674

910 SOUTHAMPTON ROAD
WESTFIELD, MA 01085
www.PatriotfreightlinerTrucks.com

6243 US RT.5
WESTMINSTER, VT 05158
(866)403-7522

McDevitt Trucks Inc.

Manchester, NH
1 Mack Ave., Manchester, NH
1-866-403-5499

An Employee Owned Company

Tewksbury, MA
939 East St., Tewksbury, MA
1-800-370-7383
Lancaster, NH
19 Bridge St., Lancaster, NH
1-800-268-0065

Watch our website, www.mctrucks.com or call your salesmen
and learn whats coming in before it hits our website!



\$234,500
2014 MACK LEU613 w/Labrie Automizer 31 cu. yd. Side Loader, MP7 325HP, Allison, Hardox body, T/A, 20K F/A, 46K R/A, stk#8701, \$234,500.



\$149,900
2016 MACK TD713, MP10, 565HP, mDrive, air ride, engine brake, T/A, 20K F/A, 52K R/A, 3,989 miles, stk#1688, \$149,900.



\$52,500
2006 PETERBILT 357 24' FLATBED W/T-BOOM, Cummins ISM diesel, 370HP, 8LL, T/A, 18K F/A, 52K R/A, 278K miles, stk#879669, \$52,500.



\$229,500
2014 MACK MRU613 W/NEW WAY MAMMOTH FRONT LOADER, MP7 345HP, Camelback, camera, pump, joy stick, T/A, 20K F/A, 46K R/A, stk#11696, \$229,500.



\$44,500
2008 MACK CHU613, MP8, 485HP diesel, Eaton-Fuller, AC, engine brake, T/A, 14,600 F/A, 46K R/A, stk#1285, \$44,500.



\$52,500
2005 PETERBILT 357 24' FLATBED, Cummins ISM 370HP diesel, 8LL, Hendrickson, T/A, 18K F/A, 52K R/A, 278K miles, stk#841114, \$52,500.



\$9,900
1993 CHEVROLET C7H042 DUMP, CAT 250HP, 18K F/A, 23K R/A, 180" WB, 93K miles, stk#102894, \$9,900



\$18,500
2004 International 4300, 18' Morgan Van Body, 215HP, PS, 9K F/A, 16,999 R/A, 205" WB, 139K miles, Stk#:617694, \$18,500.



\$82,500
2012 KENWORTH T800, Cummins ISX 450HP, Eaton-Fuller, engine brake, T/A, 60,320 GVW, 159K miles, Stk#326179, \$82,500.



QUANTITY OF 3
2012 MACK CHU613, MP8 445HP diesel, 10 spd, AC, air ride, T/A, 14,600 F/A, 46K R/A, 316K miles, stk#: 10800, \$79,500.



1 IN STOCK
2011 KENWORTH T800 Roll-Off, Cummins 450HP, Ultra-shift, engine brake, 75K LB hoist, extender tail, air & electric, hook, cover-all, tri-axle, 20K F/A, 46K R/A, 20K pusher, 213K miles, Stk#292357 \$125,500



\$44,500
2007 MACK CHN613, E7, 460HP diesel, 18 spd, engine brake, T/A, 13,200 F/A, 46K R/A, 534K miles, stk#9337, \$44,500.



\$127,500
2016 MACH CHU613, MP8 mDrive, 445HP, engine brake, T/A, 14,300 F/A, 46K R/A, 1,996 miles, new truck warranty, stk#21790, \$127,500.



\$12,500
2000 Sterling L7500 24' Supreme Box w/Lift Gate, 230HP CAT, 249" WB, 8,500 F/A, 17,500 R/A, 226K miles, Stk#: H19810, \$12,500



QUANTITY OF 2
2009 MACK CXU612, MP7, 345HP, 10 spd, diesel, 12K F/A, 23K R/A, 156" WB, 608K miles, stk#1381, \$25,500.



\$52,500
2010 MACK STERLING LT9522, Detroit diesel, 18 spd, air ride, T/A, 14,600 F/A, 46K R/A, 467K miles, stk#AM1745, \$52,500.



\$259,500
2016 MACK MRU613 Heil 28-Yd Half Pack w/8K Arm, MP7, Allison, Camelback, engine brake, T/A, 20K F/A, 46K R/A, 1K miles, stk#13758, \$259,500.



\$54,900
2007 PETERBILT 357 24'6" Flatbed w/Palfinger loader, CAT C13 430HP, 13 spd, Hendrickson, tri axle, 18K F/A, 46K R/A, 20K Pusher, 182K miles, stk#672049, \$54,900.



\$48,500
2011 MACK CXU613, MP7 365HP diesel, 10 spd, engine brake, SCR, air ride, T/A, 12K F/A, 40K R/A, 414K miles, stk#17063, \$48,500.



\$67,900
2007 PETERBILT 388, Cummins 565HP, 18 spd, diesel, tri axle, 14,300 F/A, 46K R/A, wet system, 447K miles, stk#698930, \$67,900.

WE BUY USED TRUCKS - CONTACT GARY GOBIN,
USED TRUCK MANAGER - 603-289-8450

VIEW ALL OF OUR INVENTORY AT WWW.MCTRUCKS.COM



877-761-7888

132 Pierce Rd. (Rt. 125)

Barrington, NH

(17 miles from Portsmouth)



877-540-3817

1400 South Willow St.

Manchester, NH

(1 hour from Boston)

INVENTORY REDUCTION SALE – NO REASONABLE OFFER REFUSED!



NEW 2016 IH 4300 C&C EXTENDED CAB, ISB CUMMINS 280HP DIESEL, AUTO, ENGINE BRAKE, BLUETOOTH RADIO, AC, PW, PL, 244" WB, 25,999 GVW, STK#11940



NEW 2016 IH 7500 C&C, N10 350HP DIESEL, AUTO, AC, PW, PL, ENGINE BRAKE, AIR RIDE, 272" WB, T/A, 58K GVW, STK#11787



NEW 2015 MITSUBISHI FUSO FE160 16' FLATBED/RACK, 4P10 DIESEL, ENGINE BRAKE, E-TRACK, 15,995 GVW, STK#M1222



NEW 2015 IH 4300 DUMP, ISB 300HP DIESEL, AUTO, ENGINE BRAKE, AC, 152" WB, 33K GVW, STK#11510



NEW 2016 IH 4300 EX CAB VAN BODY W/PEAK & 26" BUNK, ISB CUMMINS 300HP DIESEL, AUTO, 285" WB, 33K GVW, STK#11883



NEW 2016 IH 4300 26' VAN BODY W/PEAK, ISB CUMMINS 260HP DIESEL, AUTO, PW, PL, AC, 272" WB, 33K GVW, STK#11887



NEW 2016 IH 4300 TANK, ISB CUMMINS 300HP DIESEL, AUTO, AC, ENGINE BRAKE, 205" WB, 33K GVW, STK#11904



NEW 2013 IH 7600 17' BEAU-ROC DUMP, N13 475HP DIESEL, AUTO OD, AC, PW, PL, ENGINE BRAKE, COVER, TRI AXLE, 86K GVW, STK#11745



NEW 2016 IH 7600 C&C, N13 475HP DIESEL, 8LL, ENGINE BRAKE, HENDRICKSON HMX460, PW, PL, 272" WB, T/A, 20K F/A, 46K R/A, STK#11728



NEW 2016 IH 7300 C&C 4X4, ISB CUMMINS 260HP DIESEL, AUTO, BLUETOOTH RADIO, AC, PW, PL, ENGINE BRAKE, 175" WB, 25,999 GVW, STK#11941



NEW 2015 IH 4300, CUMMINS ISB 240HP DIESEL, AC, PW, PL, 217" WB, 25,640 GVW, STK#11255



NEW 2016 MITSUBISHI FUSO FE160 18' VAN BODY, 161HP DIESEL, AUTO, ENGINE BRAKE, RAMP, E-TRACK, 15,995 GVW, STK#M1228

www.LibertyInternationalTrucks.com



877-761-7888
 132 Pierce Rd. (Rt. 125)
 Barrington, NH
 (17 miles from Portsmouth)



877-540-3817
 1400 South Willow St.
 Manchester, NH
 (1 hour from Boston)

INVENTORY REDUCTION SALE – NO REASONABLE OFFER REFUSED!



1999 AUTOCAR ACL42B 14' T/A DUMP, N14 CUMMINS 370HP DIESEL, AUTO OD, FRONT & WING PLOWS, ENGINE BRAKE, CAMELBACK, 66K GVW, 130K MILES, STK#12049, \$24,900.



2002 IH 4900 DUMP, DT466 230HP DIESEL, 6 SPD, FRONT & WING PLOWS, ENGINE BRAKE, 36,220 GVW, 90K MILES, STK#CON-43, \$24,900.



2000 IH 4800 UTILITY W/ALTEC L42A 47' BUCKET, DT466 190HP DIESEL, AUTO, 26,500 GVW, 108K MILES, STK#11515

WHOLESALE INQUIRIES – CONTACT BRUCE BARNABY AT 800-256-5423, EXT.107 OR CELL 603-234-0226



2005 IH 6700 10' EVEREST COMBO DUMP & PLOW, 4X4, ISM CUMMINS 305HP DIESEL, 10 SPD, ENGINE BRAKE, 97K MILES, STK#11885



2006 MACK VISION CXN613, E7 355HP DIESEL, 10 SPD, ENGINE BRAKE, 179" WB, T/A, 52K GVW, 332K MILES, STK#11476



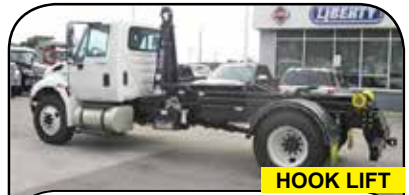
2012 IH 4300 26' MORGAN VAN, DT 245HP DIESEL, AUTO OD, 96" W, 97" H, E-TRACK, 2500# TUCK-AWAY LIFT GATE, 25,999 GVW, 110K MILES, STK#11977



1999 IH 4900 14' DUMP W/11' POWER ANGLE PLOW, DT 275HP DIESEL, 10 SPD, HENDRICKSON, TRI AXLE, 56K GVW, 32K MILES, STK#11866



2007 MACK GRANITE CV713, 6X4, E7 427HP DIESEL, 10 SPD, ENGINE BRAKE, AIR RIDE, T/A, 53,200 GVW, 765K MILES, STK#11847, \$32,900.



2012 IH 4300 HOOKLIFT, DT466 230HP DIESEL, AUTO, AIR RIDE, 10K F/A, 19K R/A, 116K MILES, STK#11698



1994 VOLVO ACL64B 17' TRI AXLE DUMP, N14 CUMMINS 370HP DIESEL, 8LL, ENGINE BRAKE, 80K GVW, 346K MILES, STK#12057, \$39,900.



1995 CHEVROLET KODIAK C8500 FLATBED W/CRANE, 3116 CAT 210HP DIESEL, 8LL, WALKING BEAM, T/A, 53,200 GVW, 52K MILES, STK#11973, CALL



2014 KENWORTH W900B SLEEPER, ISX15 CUMMINS 485HP DIESEL, AUTO OD, ENGINE BRAKE, AIR RIDE, T/A, 59,200 GVW, 107K MILES, STK#11969, \$124,900.

www.LibertyInternationalTrucks.com

SALES & RENTALS INC.

T-QUIP

YOUR 1ST CHOICE IN SALES & RENTALS

WWW.TQUIP.COM
CONTACT: RANDALL SANDERSON
OFFICE: 603-623-3669
603 MAMMOTH RD
Londonderry, NH 03053
OPEN SATURDAYS 8am-1pm

OVER 500 PIECES FOR SALE OR RENT!!!



**(10) 2007 - 2012
35 FT. DUMP
TRAILERS**
**MAC - ALFAB -
RHODES**
**24.5 RADIALS,
3RD AXLE, AIR
LIFT, ALUMINUM
WHEELS, AUTO
TARPS**
**ALL OPTIONS!
\$39,500 - \$45,000**



(2) 2013 RHODES END DUMP TRAILERS
28', 2 AXLE, 24.5 RUBBER, NEAR NEW
\$47,500 EACH



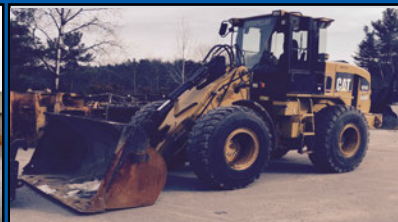
**2007
KENWORTH
W900L**
CAT C15, 25 HP
**W/STAGE 2 KIT,
18 SPEED, 46"
REARS, 391
RATIO, 124.5
RUBBER.**
\$79,500



(2) 2014 KOMATSU WA200-6'S
**EROPS, AC, RIDE CONTROL, 17.5
RUBBER, 2.5 CY BKT. \$99,000 EACH**



2008 CASE 580M
**CAB, A/C, 4X4, EXTENDAHOE, ALL
OPTIONS, LOW HOURS. \$42,500**



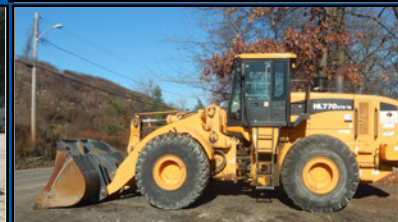
**2007 CAT 924G EROPS, A/C, 20.5
RADIAL RUBBER, Q/C, MONO BOOM,
FORKS \$69,500**



**2006 KOMATSU WA450-5 EROPS, A/C,
26.5 RADIALS @ 70%, 5CY G.P. BUCKET,
JOB READY! \$89,000**



**2005 CAT 930G EROPS, A/C, NEW 20.5
RADIALS, 3RD VALVE, 8' Q/C B.O.C.E.
BUCKET, WITH FORKS \$79,500**



**2010 HYUNDAI HL700 EROPS, A/C, HEAT,
3RD VALVE, AUX. PLUMB., 10'2" BKT
\$109,000**



**(2) 2010 CAT 420E-IT EROPS, A/C, 4
X4, HYD PLUMBING, E-STICK, 24" A
Q/C BUCKET. FROM \$59,000**



**2011 CAT 906H EROPS, A/C, 3RD VALVE,
Q/C, 4 IN 1 BUCKET, FORKS, 405-70R
RUBBER, ALL OPTIONS \$55,000**



**(2) 2011 CAT 930H'S EROPS, A/C, 20.5
RUBBER, 3.5 C' BKT, 3RD VALVE, Q/C,
ALL OPTIONS \$109,000 EACH**



**2004 WA65 HYD Q/C, A/C, HEAT, 70" GP BKT,
FORKS, LIGHT PACKAGE, 2604 HRS \$37,500**

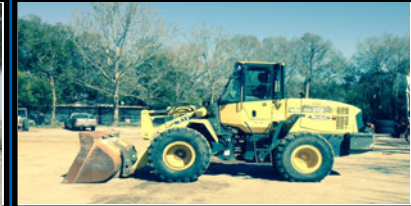
DAILY • WEEKLY • MONTHLY • RENTALS AVAILABLE



2010 CAT 950K EROPS, A/C, 23.5X25 RADIALS, RIDE CONTROL, CAT FUSION COUPLER, 3RD VALVE, 4.25CY BUCKET. **\$139,000**



2013 KOMATSU WA250PZ-6 EROPS, A/C, 20.5X25R, 3 CY BKT, RIDE CNTRL, KOM HYD Q/C. ONLY 1000 HRS. REDUCED! **\$135,000**



2006 KOMATSU WA250 EROPS, A/C, 20.5 RUBBER, 3.5CY, GP BUCKET, JRB Q/C, 7000+/- HRS. **\$69,000**



2006 WESTERN STAR HEAVY HAULER 515HP, 18 SP, 46 REARS, DOUBLE FRAME, WET KIT, FULLY LOADED. **\$59,000**

HEAVY HAULER



2014 CAT 252B-3 CAB, A/C, 72" GP BKT, RUBBER TIRES, 600 HOURS **\$39,500**



2007 CAT TL1055 EROPS, 4X4, A/C, HEAT, 10K LIFT, 55' REACH HGT, FRONT STABILIZERS, 17.5X25 RUBBER. ALL OPTIONS **REDUCED! \$59,000**



(4) 2007 KOMATSU HM300-2s 6X6, A/C, 70% 23.5 RUBBER, EXCELLENT CONDITION, SALE READY. **REDUCED! \$99,000 EACH**



(2) 2008 CAT 330DL'S CAB, A/C, 12'6" STICK, 48" BKT, HYD PLUMB, ALL OPTIONS. 6000 +/- HRS. **\$129,000 EACH**



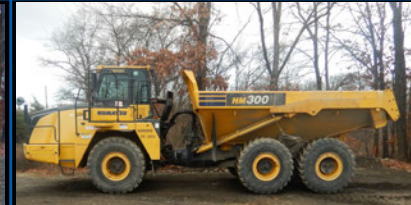
2000 VOLVO A35C A/C, CAB, 26.5 RADIALS, RECENT INSPECTION BY VOLVO, GREAT SHAPE! **\$49,500**



GENIE S40 4X4 BOOM LIFT, DUAL FUEL, POWER TO PLATFORM. WORKING DAILY **\$12,500**



2008 KOMATSU WA380-6 EROPS, AC, RIDE CNTRL, 23.5 RADIALS, 4 CY BKT, EXCELLENT CONDITION! **\$89,000**



(5) - 2012 KOMATSU HM300-3'S A/C, 6X6, 23.5 RADIALS, ALL OPTIONS, 4,000 +/- HOURS. **\$209,000 EACH**



2009 PETERBILT 367'S 475 HP, ENG BRAKE, EAT ON FULLER 10 SP, DBL FRAME, AIR TRAC A/R SUSP, 14000LB FRT, 46000LB REARS, 212IN. WB. **\$69,500**

90K+/- ORIGINAL MILES



CAT 12G EROPS, HEATER, DIFF. LOCK, 20.5R25 RUBBER, RIPPER, 14' MOLDBOARD. UNBELIEVABLE CONDITION! **\$59,000**



PETERBILT GLIDER KIT 475 HP CAT C15, 18 SPEED, 14 FRT, 20K STERABLE AXLE, 46K REAR, 390 RATIO, WET KIT, NEW COMPONENTS. **\$149,000**

2015

SALES & RENTALS INC.

T-QUIP

YOUR 1ST CHOICE IN SALES & RENTALS

CALL NOW FOR THE DAILY – WEEKLY – MONTHLY RENTAL RATES

YOUR EAST COAST EQUIPMENT SOURCE

603-623-3669

CONTACT: RANDALL SANDERSON
EMAIL: RSANDERSON@TQUIP.COM

SALES/RENTAL

DENNY EASTON - RI & SOUTHERN MA 401-255-9340
JOHN COLCORD - SOUTHERN NH, NORTHERN MA 603-396-5144

We are cash buyers for quality used trucks and equipment!

BROOKSIDE EQUIPMENT SALES

WWW.BROOKSIDEEQUIPMENT.COM

888-823-1886



2012 JOHN DEERE 160D LC: 2,248 HOURS, 40" BUCKET, AUX HYD, HYD COUPLER, VERY GOOD U/C, A/C, 4 CYL JOHN DEERE TURBO, 40K LB SIZE CLASS, STK#XC001, \$99,500



2011 JOHN DEERE 160D LC: 8,483 HOURS, 35" BUCKET, HYD THUMB, HYD COUPLER, VERY GOOD U/C, A/C, 4 CYL JOHN DEERE TURBO, 40K LB SIZE CLASS, STK#XC769, \$59,900



2001 JCB 714: 2,775 HOURS, 14 TON, 4X4, ARTIC., 6 CYL CUMMINS TURBO, CAB W/ A/C, VERY GOOD RUBBER, STK#HT083, \$43,500



2015 CASE SR160: 117 HOURS, 1600 LB LIFT, CAB, AUX HYD, MECH COUPLER, CASE CONTROLS, VERY GOOD RUBBER, 60" BUCKET, 4 CYL SHIBAURA TURBO, 5.5K LB SIZE CLASS, STK#SK399, \$34,500



2012 MOROOKA MST1500VD: 1,643 HOURS, 7.7 TON TRACK DUMPER, CAB W/ A/C, 6 CYL CAT C6.6 ACERT TURBO, VERY GOOD TRACKS, VERY GOOD U/C, HITCH, 72" BY 98" DUMP BODY, STK#DU610, \$97,500



2013 CATERPILLAR 930K: 8,524 HOURS, 3.5 YARD, CAB W/ A/C, HYD COUPLER W/ 3RD VALVE, 6 CYL CAT TURBO, 31K LB SIZE CLASS, STK#LO143, \$84,500



2006 GENIE GTH636: 5,524 HOURS, 6K LB LIFT, 4X4, 36 FT LIFT HEIGHT, 21 FT HORIZONTAL REACH, OROPS, TILT BODY, 4 FT FORKS, 4 CYL JOHN DEERE TURBO, GOOD RUBBER, STK#FL520, \$22,950



2012 CATERPILLAR 416F: 1,598 HOURS, 4X4, X-HOE, CAB W/ A/C, TURBO, 24" REAR BUCKET, STK#BH332, \$62,500



2005 CATERPILLAR M315C: 27" BUCKET, CAB W/ A/C, AUXILIARY HYDRAULICS, 4 CYL CAT TURBO, 36K LB SIZE CLASS, STK#WX563, \$43,500



2012 CATERPILLAR 930K: 2,247 HOURS, 3.5 YARD, CAB W/ A/C, HYD COUPLER W/ 3RD VALVE, 6 CYL CAT TURBO, GOOD RUBBER, 31K LB SIZE CLASS, STK#LO566, \$133,950



2012 VOLVO L90G: 11,179 HOURS, 3.3 YARD, CAB W/ A/C, HYD COUPLER W/ 3RD VALVE, 6 CYL VOLVO TURBO, AUTOSHIFT, 34K LB SIZE CLASS, STK#LO271, \$83,950



2000 CASE 580L-II: 2,616 HOURS, 4X4, X-HOE, CAB, 24" REAR BUCKET, 2-STICK BACKHOE CONTROLS, STK#BH254, \$25,500



2006 KOMATSU WA380-5L: 10,325 HOURS, 4.3 YARD, CAB W/ A/C, 6 CYL KOMATSU TURBO, GOOD RUBBER, 39K LB SIZE CLASS, STK#LO776, \$64,500



2007 JOHN DEERE 350D LC: 9,375 HOURS, 46" BUCKET, A/C, AUXILIARY HYDRAULICS, 6 CYL JOHN DEERE TURBO, 78K LB SIZE CLASS, STK#XC870, \$74,500



2002 CATERPILLAR 320C U: 6,490 HOURS, 41" BUCKET, AUXILIARY HYDRAULICS, VERY GOOD U/C, A/C, 6 CYL CAT TURBO, 43K LB SIZE CLASS, STK#XC007, \$49,500



2005 BOBCAT 442C: 3,085 HOURS, 24" BUCKET, MANUAL THUMB, CAB W/ A/C, 92" BLADE, AUX HYD MECH COUPLER, SWING BOOM, GOOD TRACKS, GOOD U/C, 4 CYL DEUTZ TURBO, 17K LB SIZE CLASS, STK#XC168, \$31,500



2011 JOHN DEERE 710J: 2,964 HOURS, 4X4, CAB W/ A/C, X-HOE, FRONT HYD COUPLER W/ 3RD VALVE, TURBO, P-SHIFT, RIDE CONTROL, PILOT CONTROLS, REAR AUX HYD, REAR MECH COUPLER, STK#BH987, \$69,500



1999 MACK RD688S: 415,831 MILES, TRIAXLE, 17.5 FT STEEL BODY W/ 3 CHUTES, MACK E7-400, FULLER 8LL, DOUBLE FRAME, JAKE, HITCH W/ AIR & ELECTRIC, CAMELBACK SPRING SUSPENSION, GOOD BRAKES, STK#TK624, \$53,500



2011 JOHN DEERE 200D LC: 2,159 HOURS, 36" BUCKET, A/C, VERY GOOD U/C, 2 SPEED, 6 CYL JOHN DEERE TURBO, 49K LB SIZE CLASS, STK#XC292, \$99,950



1996 MACK RD688S: TRIAXLE, 16 FT STEEL BODY, W/ 1 CHUTE, MACK E7-400, FULLER 8LL, 20K F, 20K, TAC, 44K R, HITCH W/ AIR & ELECTRIC, A/C, DOUBLE FRAME, CAMELBACK SPRING SUSPENSION, GOOD RUBBER, JAKE, GOOD BRAKES, STK#TK382, \$37,500

60 STATE RD, PHILLIPSTON, MASS

888-823-1886

EMAIL: KEVIN@BROOKSIDEEQUIPMENT.COM



25 MINUTEMAN TRUCKS, INC.

2181 Providence Highway ★ Walpole, MA 02081
Toll Free: 800-225-4808 ★ Local: 508-668-3112
 www.MinutemanTrucks.com ★ **Certified MBE**



SALES ★ SERVICE ★ PARTS ★ LEASING & RENTAL



NEW

2015 FORD E-450 4X2
 6.8L EFI V10 Ford Engine. 5-Speed Auto. GVW 14,500. Stock #450196



NEW

2015 FORD F-550 XL 4X4
 6.7L Power Stroke Diesel. 6-Speed Auto. GVW 19,500. Stock #550587



NEW

2015 FORD F-550 SUPERCAB 4X4
 6.7L Power Stroke Diesel. 6-Speed Auto. GVW 19,500. Stock #550617



USED

2009 INTERNATIONAL 4400
 Maxxforce DT. 6-Speed Auto. GVW 33,000. Stock #149314



USED

2012 FORD E-350 CARGO VAN
 5.4L EFI V8 Gasoline. 5-Speed Auto. GVW 9,500. Stock #149178



NEW

2015 FORD F-550 XL SUPERCAB 4X4
 6.7L Power Stroke Diesel. 6-Speed Auto. GVW 19,000. Stock #550645

Call Sales for More Details!

- Marty Castrechini
- David Pardi
- Dominick LaGambina
- David Lee
- Dennis Beausoleil



NEW

2015 INTERNATIONAL TERRASTAR 4X4
 Maxxforce 7/300. Allison 1350 RDS. GVW 19,500. Stock #300034



NEW

2016 INTERNATIONAL 4300M7 SBA 4X2
 Cummins ISB/250. Allison 2500 RDS. GVW 25,999. Stock #400992



NEW

2015 INTERNATIONAL 7600 SBA 6X4
 Navistar N13/390. Allison 4000 RDSP. GVW 60,000. Stock #700365



NEW

2016 INTERNATIONAL 7400 SBA 6X4
 Navistar N13/475. RTO-16908LL. GVW 66,000. Stock #700367



NEW

2016 INTERNATIONAL 7600 SBA 6X4
 Navistar N13/475. RTO-16908LL. GVW 66,000. Stock #700368



NEW

2015 INTERNATIONAL PROSTAR 4X2
 Navistar N13. Eaton FRO-13210B. GVW 32,000. Stock #800085

Celebrating 25 Years in Business!

Visit www.MinutemanTrucks.com for a Full Inventory Listing

SARAT



WWW.SARATFORDTRUCK.COM



Call Rick Dano Commercial Truck Manager 413-789-5400



F Series Models



2015 Ford F350 XL 6.2L gas, 4x4, DRW, power group, 9' EBY aluminum platform dump w/ removable sides, #37429



2015 Ford F350 XLT Super Cab, Diesel, 4x4, DRW, alum wheels, 9' Reading Classic II w/ Rhino Lining, #11366



2015 Ford F550 XL 4x4 diesel, auto with power group and Reading dump body, #S1189



2016 Ford F550 XLT Super Cab, 4x4, diesel, aluminum wheels, 9' Rugbt 4-5 yd dump, 4 colors available #75054



2016 Ford F550 Diesel, 4 x 2, power group, 16' Flatbed body, #85638



2015 Ford F550 Diesel, 4 x 4, power group, dumping 12' Landscape Body, #58604, green, white, & red available



2015 Ford F550 XL, diesel, 4x4, L pack, power group, 9' dump body, #S0777



2015 Ford F350 XL, 4x4, DRW, gas, power group, 9' Rugby dump body, #S1035



2015 Ford F350 XL, 4x4, DRW, 6.7L diesel, Reading utility body, red & white available #S0957

E Series/ Transit Models



2016 Ford F550 Diesel, 4x4, power group, 15' Durabox Max Utility w/ attic, power liftgate, #93871



2015 Ford Transit 250 Cargo Van w/ drop down ladder rack, Sortimo contractors shelving package, #92800



2016 Ford E350 V8 gas, 15' aluminum cube body, DRW, auto, power group, #00759



2016 Ford E350 Aerocell Cutaway, SRW, V8, 12' body, #10512



2015 Ford E350 DRW, gas V8 - auto, with power group & 15' Utilimaster Cube w/ Aerocap & aluminum ramp #30358



2015 Ford Transit 350HD, 3.2L 5 cyl turbo diesel, DRW, power group, 12' Unicell body w/ roll up rear door, #09562



413-789-5400



245 Springfield St. Agawam, MA

Includes all rebates to dealer, customer must qualify



2006 FORD F350. Extra cab, 6.0 diesel, 70K, auto, pw, AC. Comes w/9.2 Boss Poly V plow, back rack strobe & utility lights. Very good shape, work ready, needs nothing, \$17,500. 860-250-0101

2004 TERRAMITE T5C.
Kohler engine w/ 1850 hrs, \$7,000, Westbrook, CT, 860-669-2832



Tight Link Fence Co.
Residential ~ Commercial ~ Industrial
Mark Dillon
774-365-0222



2006 CHEVY SILVERADO 2500. LBZ Diesel, Allison 6-speed, loaded interior, Pro-Comp tires, 78K miles, \$25,000. West Kingston, RI 401-782-5332



2002 GMC W3500 SERIES,
GAS, AUTOMATIC, BOX TRUCK. 401-434-5900



1987 SPARTAN FMC FIRE ENGINE. 300hp Cummins with 57K, Allison 647 auto trans, poly 2 1500 gal tank, pump works. Some frame rot in the rear, \$3000 OBO. Mark, 508-326-6438



2000 FREIGHTLINER 6 WHEEL DUMP.
CAT powered, 250 hp, auto tranny, 37,000 GVM, Viking all season body, central hyd. plow hookup, 34K orig. miles, dual spinners, plus calcium tank, will need some TLC, sitting since last spring, cert. of origin, \$12,500. Waterbury, CT 203-232-0921



2005 CHEVY C750 SERVICE PUMP REPAIR TRUCK, Miles - 230,000, Isuzu 7.8L Turbo Diesel Engine, New Turbo...\$19,900 Call Dan 781-439-6000

PERFECTION
truck body equipment
17 Old Manchester Road Candia, NH 03034



Plows, Sanders, Snow Pushers, Truck Bodies In Stock

BETTER THAN INDUSTRY'S BEST



Lanau Dumps All Sizes 10 Ft Up In Stock



Van Interiors

THANK YOU FOR VOTING US THE BEST LOCAL TRUCK BODY EQUIPMENT COMPANY



FORD 8N NEW ENGINE, \$2,900, 2 TRACTORS TO CHOOSE FROM. 860-928-5748

We Have The Perfect Body For You
1-603-244-1219 and Visit www.PerfectionTruckBody.com

Hoffman



East Hartford, CT

Ask for Charlie 860.290.6126 charlie.hartley@hoffmanauto.com



2016 Ford E350 Cutaway V8 gas, automatic, #GDC15788



2016 Ford F350 Super Cab and Chassis. 4x4, 6.7L diesel, auto, #160011



2015 Ford F550 Diesel, 4x4, 9' Knapheide w/ gooseneck, #150303



2016 Ford F550 6.7L Diesel w/Reading Dump. #160051



2015 Ford F350 6.2L gas, 4x4, Reading dump body, #150414



2015 Ford F350 Diesel, 4x4, 9' Reading utility body, #150333



2016 Ford F550 Chassis cab. 141" WB, #160021



2016 Ford F550 XLT diesel, 4x4, tool box, tarp, Marauder dump body, #GEA45709



2015 Ford F350 Diesel, 4x4, 9' Reading dump body, #150002



2016 Ford F550 Super Cab & Chassis. 4X4 Diesel, 162" WB, #160020



2015 Ford F550 Diesel, 4x4, 9' Landscape dump, #150334



www.hoffmanauto.com



603-239-7008
GLOBAL Truck Traders, Inc.



524 KEENE RD. (RT.10) WINCHESTER, NH 03470 • WWW.GLOBALTRUCKTRADERS.COM



2007 MACK VISION CX612, 310HP diesel, turbo, 9 spd, PS, 12K F/A, 23K R/A, 418K miles, stk#5389, \$19,900.



2008 DODGE SPRINTER 3500 23'4" Cargo Van, dually, Mercedes 3.0 turbo diesel, auto, PW, AC, 215K miles, stk#60156, \$9,500.



2001 MACK RD688S W/4800-GAL. HEIL SEPTIC TANK, E7 400HP diesel, 8LL, engine brake, Camelback, 18K F/A, 44K R/A, 271K miles, stk#61647, \$52,500.



1995 AUTOCAR ACL64FT, Cummins N14 435HP diesel, 8LL, turbo, PS, engine brake, T/A, 12K F/A, 46K R/A, stk#15492, \$21,000.



2010 MACK VISION CXN613, MP7 365HP, diesel, 10 spd, air ride, AC, PW, PS, DOT, T/A, 12K F/A, 40K R/A, stk#11141, \$38,900



1999 MACK RD688S, 350HP diesel, 13 spd T2130, engine brake, Camelback, 228" WB, tri axle, 18K F/A, 44K R/A, steerable pusher, stk#39477, \$32,500.



1979 MACK RM6864X w/11' SPREADER, E6 2V 283HP diesel, turbo, 5 spd, hi/lo transfer case, wet kit, stk#1073, \$17,500.



1992 MACK RM6884X DUMP, 350HP E6-2v, diesel, auto, turbo, PS, wet kit, 162" WB, 45K miles, Stk#1135, \$26,500.



2007 MACK CHN613, diesel, 18 spd, engine brake, Camelback, wet system, PS, T/A, 14K F/A, 46K R/A, 432K miles, stk#7237, \$54,900.

YOUR NUMBER ONE CHOICE FOR MACK PARTS, CALL DONNY at 603-239-7008



**WE BUY MACKS & ALL OTHER TRUCKS!
 IMMEDIATE PAYMENT – CALL TODAY!**

**Do you have a Mack or other used truck for sale?
 Running trucks, parts trucks, damaged trucks of
 all makes & models wanted.**

Call Sam or DONNY 603-239-7008

524 KEENE RD. (RT.10) WINCHESTER, NH 03470 WWW.GLOBALTRUCKTRADERS.COM
 PORT DELIVERY AVAILABLE • FINANCING AVAILABLE

603-239-7008
GLOBAL Truck Traders, Inc.



524 KEENE RD. (RT.10) WINCHESTER, NH 03470 • WWW.GLOBALTRUCKTRADERS.COM

OUR MACK TRUCK PARTS COME WITH A 90 DAY WARRANTY ON ALL SALES SALES TAX FREE NEW HAMPSHIRE

SPECIAL OF THE WEEK



REBUILT E7 400 V-MAC WITH JAKE BRAKE \$14,000!!!



REBUILT E6 350 4V WITH JAKE BRAKE \$15,000!!!



ENGINES & ENGINE PARTS:

- CONTAINER LOADING OF ENGINES OUR SPECIALTY!
- **MACK, CATERPILLAR, CUMMINS, INTERNATIONAL, SCANIA**
- INVENTORY CHANGES DAILY!
- **ENGINE BRAKES-** COMPLETE KITS AND PARTS- NEW AND USED
- **DON'T JUNK IT- REBUILD IT!** CYLINDER BLOCKS, HEADS, MANIFOLDS, CRANKSHAFTS, EXTERNAL PARTS- WAREHOUSED AND READY TO SHIP **WORLDWIDE**
- **ECM-** UNITS AVAILABLE AT ALL TIMES- CALL WITH PART NUMBER
- **CORES< CORES<CORES** ALTERNATORS, STARTERS, AIR COMPRESSORS, INJECTION PUMPS, ETC.
- **NOT JUST USED PARTS-** WE STOCK MANY NEW PARTS TO GET YOU OUT OF A JAM OR TO HELP YOU IN YOUR PROJECT. ALWAYS

STOCKING FILTERS, GATES HD SERPENTINE BELTS, GASKETS, NUTS, BOLTS, PINS, WHATEVER!
 • **EXPERT ADVICE-** WE ALWAYS LOVE TO HEAR FROM OUR CUSTOMERS AND TO HELP THEM ALONG AS BEST WE CAN. DO YOU HAVE A QUESTION ONLY AN EXPERIENCED REBUILDER CAN ANSWER?
603-239-7008
 • **UPS WORLDSHIP-** WE SHIP DAILY TO YOUR LOCATION, REGULAR GROUND OR NEXT DAY AIR- WE CAN DO IT!
 • COMMON CARRIER- PALLETIZED LOADS LEAVING DAILY ALL OVER NORTH AMERICA,
NEXT DAY IN NEW ENGLAND \$95!
HOODS, BUMPERS, & CABS
 • **STOCKING DEALER BRAND NEW** AFTERMARKET HOODS, **CHROME BUMPERS,** GRILLES AND DOORSHELLS

- **USED TAKE OFF HOODS** VOLVO, WHITE, INTERNATIONAL, MACK, YOU NEVER KNOW WHAT WE'LL HAVE IN THE YARD!
- **CABS AND PARTS** COMPLETE, WIRED UNITS- SHELLS-WIRING HARNESSSES, INTERIOR TRIM, FLOOR PANS
- **WINDSHIELDS- NEW** R MODEL, DM, U MODEL, RD, ETC. AND CH, CL WINDSHIELDS IN STOCK AT ALL TIMES!
- **SUPERLINER** CALL
- **GAUGES-** NOS AND USED GAUGES, HARD TO FIND, DISCONTINUED UNITS
- **SEATS-** USED, COMPLETE SEATS, AIR-RIDE BASES, CONTROLS, NEW MACK SEAT FOAM AND COVERS BY REQUEST!
- **EXHAUST BRACKETS-** SINGLE AND DUAL EXHAUST PARTS, PIPES, ELBOWS, MUFFLERS, SHIELDS, GRAB HANDLES, ETC.
- **RADIATORS:** CH TANK-LESS AND STEEL TANK TAKE-OUT RADIATORS IN STOCK.
- MAXIDYNE/ ECONODYNE RADIATORS OCCASIONALLY

AVAILABLE- CALL FOR CURRENT STOCK
 • USED, TESTED INTERCOOLERS FOR MANY MODELS
 • A/C CONDENSERS- VARIOUS MODELS
 • GRILLES, RADIATOR GUARDS AND TRIM FOR MANY MODELS AVAILABLE
 • A/C CONDENSERS- VARIOUS MODELS
 • GRILLES, RADIATOR GUARDS AND TRIM FOR MANY MODELS AVAILABLE
MACK & FULLER TRANSMISSIONS: GREAT SELECTION IN STOCK STARTING AT \$750
MACK FRONT AXLES:
 • ALL MODELS, HUB-PILOTTED, BUDD, SPOKE, CALL WITH NEEDS.
NEW HYDRAULIC PUMPS, TANKS, & CONTROLS
 • C-101 & C-102 PUMPS - \$445 EACH



!! WE ARE COMMERCIAL TRUCKS !!

**Call Domenic DiMascio
Commercial Truck Manager
Cell Phone 339-933-9142
e-mail: domenic@buycolonialford.com**

CALL US TOLL FREE 888-998-1779



DIESEL

2006 F350 XLT Super Cab 4x4: 9' READING Service Body, 6.0L Power Stroke Turbo Diesel, Limited Slip Diff., slider, Aluminum wheels, snow plow prep., ONE OWNER 84K miles. Stk.# N4592A \$22,985



\$14,995

2005 GMC 3500 15' Box Truck: V8, Auto., A/C 99K miles. Stk.# N4965A \$14,995



INCOMING 2011 F650 & F70 CHASSIS

ONLY 5 LEFT!

2011 F650 AND F750 CHASSIS: 230" WB, 6.7 CUMMINS DIESEL, ALLISON AUTOMATIC, AIR BRAKES, milage range from 50K to 115K. Call and reserve yours now.



DIESEL

2015 F550 Super Cab XLT 4x4 9' Reading Dump Body: Diesel, Aluminum wheels, Power seat, Blue Tooth, full power. stk.# N4233. MSRP: \$71,251 Buy For: \$58,999



(6) IN STOCK IMMEDIATE DELIVERY

DIESEL

2016 F550 DIESEL 4x4: Power Group, Brake Controller, 12' RUGBY Landscaper. Available in Red, Black, White, Green.



20 F550's IN STOCK NOW!

DIESEL

2016 FORD F550 4x4 Diesel. Color Green, Power Group, 9' Iroquois 4-5 yard dump body. stk.# 4632



DIESEL

2015 F550 Regular Cab 4x4 12' KNAPEIDE Flat Bed : Diesel, Power Group, Cruise/Tilt, 19,500 GVW. Stk.# N4364 MSRP: \$60,735 Colonial Ford price: \$48,938



DIESEL

2016 F550 Super Cab 4x4: Diesel, Power Group, Brake Controller, 9' READING MARUDER Dump Body. Ready to work.



DIESEL

2016 F450 Super Cab 4x4: Diesel, Power Group, XL Appearance Group, 9' Reading Service Body. XL and XLT Super Cabs are in stock now.



LAST ONE

2016 E350 KUV: Power Group, Chrome Package, Remote Locking System. Hurry. This truck won't last. Call Domenic today



2016 TRANSIT 250: SRW READING Service Van. Power Group, Blue tooth, Brake controller. Stk.# N4856



DIESEL

2016 F350 Super Cab 4x4: 6.2L V8, Power Group, XL appearance group, Aluminum wheels, 9' Reading Service Body. Gas and diesel XL and XLT in stock now.

**147 Samoset Street (Rte. 44)
Plymouth, MA 02360
www.BuyColonialFord.com
America's Hometown Dealership**



*all rebates to dealer. must finance with Ford Motor Credit.



R & R INDUSTRIES

**We Buy All
Scrap Metals**

www.RRTrucksAndEquipment.com • Sales@RandRind.com

413-733-2118

195 Rocus Street, Springfield MA 01104

TOP \$ PAID FOR ALL METALS

*** ALL FERROUS & NON FERROUS METALS*
COPPER/BRASS/ALUMINUM/STAINLESS/IRON
& STEEL* MACHINERY* HEAVY EQUIPMENT*
CARS/TRUCKS***



DIESEL MOTORS 2002 5.9L Cummins 24 Valve
6 cyl turbo, 2002 CAT 3126 6 cyl turbo, Both low miles,
Only \$2,000 Exchange



10' Reversible Wing Plow, rotates 180
degrees, others to choose, \$1,850/OBO



6', 7', 8', 9', 10' & 11'

Plow Blades all sizes Starting @ \$200,
(2) nice 11' 4 way blades only \$1,000 each.
Call Bruce



Hyster 8,000 lb capacity rough terrain forklift,
6 cyl gas, pneumatic tires, runs & works
great, Only \$3,500

MOTORS FOR SALE

Detroit Ser 60 12.7 Liter

12-V-71 Detroit

(2) 3208 CAT

Cummins Big Cam 400

8-V-71 Detroit Pwr Unit

Mack's 237 & Scania

7.3L Ford Powerstroke

Mitsu 2 & 3 Cyl Diesel

JD 3 Cyl Diesel

Komatsu 3 Cyl Diesel



CAT D6 Bull Dozer runs and works great,
straight blade, direct start, oldie but a goodie,
Only \$5,500



Snow Plow Blades

Snow Blades 9' & 10' just need paint,
\$750 each, others to choose



2006 Henderson 10' Dump Body integrated
sander, dumps both ways, with tarp, excellent
condition, Priced For Quick Sale \$4,250



1976 IH 2050 DUMP W/RUST FREE 15' dump
body, tarp, DT466, Allison auto. Will sell body
separately. \$6,500

**TIRES-All Sizes
Drives & Steers
For trucks, tractors, &
earth movers.
Call w/ your needs.**



John Deere 2010 Crawler Loader. gas motor, perfect
tracks & gears & hydraulics, runs great, has a
shifting issue, Only \$2,500 Parts or Repair



1996 FORD L-8000 8.3L Cummins motor, 5 sp with
2 sp rear end, nice tires! runs & drives perfect, dump
body with integrated sander with 11ft wing plow, road
worthy with a few cosmetics. \$6,350



1972 Schertzer 75 Ton Detachable Low Boy w/ drop
sides, 33' steel deck, 15' tail, 60' total length, 10' wide,
excellent cond, A Steal @ \$18,950/OBO



Case 580CK Construction King Loader Backhoe
diesel, Runs Great, 4 new tires, Reduced For Quick
Sale \$6,295 OBO others to choose



1986 CHEVY C-70 with 10' heavy duty plow & 6-8 yd
dump, 5 spd with 2 spd rear end, Great site truck, only
needs a little TLC. \$3,895

TASCA



NEW LOCATION

860-706-0950

45 Brainard Rd, Hartford, CT

**Ask For
Luis Tejada**



Hino with 26ft box



Hino Chassis. 26,000 GVW, air brakes



2014 Ford F350 gas, with Magnum Aluminum Landscape body



2016 Ford F450 diesel, fold down sides and plow.



2016 Ford F350 Chassis cab, gas engine, 4X2



2015 Ford F550 4X4, diesel with 9ft dump



2016 Ford F350 Chassis cab, gas engine, 4X4



Hino 19,500 GVW, with 20' box



Hino 19,500 GVW, with 16' box



F350 and F450 Chassis in stock. Gas and Diesel.

www.tascafordhartford.com



IRON FUNDING

WWW.IRONFUNDING.COM

1-844-607-IRON (4766)

NEED FINANCING?

100% Financing For All Your Equipment!

- Construction Equipment
- Logging Equipment
- Mining Equipment
- Trucks & Trailers
- Farm & Agricultural
- One Machine to Several Pieces
- Machines of ALL Sizes
- Anything Advertised in This Magazine



Catering To The Construction Industry For All Your Financing Needs!

Iron Funding is a unique financing firm specializing in construction equipment. We are dedicated to the construction and similar industries offering finance solutions for all kinds of heavy equipment.

**GET YOUR SNOW
LOADERS, SANDERS
AND DUMP TRUCKS
FOR THE WINTER!**

- Financing for ALL CREDIT TYPES! Excellent - Damaged!
- RATES AS LOW AS 4% for excellent credit!
- NO AGE RESTRICTIONS!
- No min/max size transaction!
- REFINANCING & CASHOUT on existing equipment!
- We finance PRIVATE SALES
- START-UPS (620 Minimums Fico)
- Quick 7 question, 1 page application taken right over the phone or email/faxed in.

**IF YOU HAVE BEEN TURNED DOWN IN THE PAST, GIVE US A CALL TODAY.
WE WILL LISTEN TO YOU AND WILL HELP YOU OBTAIN THE EQUIPMENT YOU NEED!**

Call Chad Nardo 9am-9pm EST, including weekends:

1-844-607-IRON (4766)

ATTENTION EQUIPMENT DEALERS: We offer private programs and a dedicated assistant for all your transactions. Partner with Iron Funding to take full advantage of the many incentives we have to offer you!

Located in Massachusetts

Finance Nationwide

OFF RTE 24: 920 WEST CHESTNUT ST
BROCKTON, MA 508/586-1666

WWW.EASTCOASTTRUCKSTUFF.COM

OFF RTE 3: 42 WINTER ST
PEMBROKE, MA 781/826-1666



TRUCK & TRAILER, INC.

ONE STOP FOR ALL YOUR WINTER NEEDS!

WIPER BLADES

WANCER

WINTER BLADES

\$4.50/EACH

16" - 24"



WINDSHIELD WASHER FLUID

\$2.59/GALLON

PROTECTS TO -20°F

POWER SERVICE
Diesel Additives



ECCO



WHELEN
ENGINEERING COMPANY INC



CRC

HOWES LUBRICATOR
PRODUCTS
Professional Grade Performance Since 1928

FEDERAL SIGNAL CORPORATION
Electrical Products

CUTTING EDGES



JOHN DEERE 4430 TRACTOR. full cab, AC, reman motor, 2nd owner, excellent condition, \$13,500, 860-280-4140

GROVE 3269 SCISSOR LIFT, 4X4, DUAL FUEL GAS & PROPANE, SLIDE OUT WORK PLATFORM, 600 HOURS, GREAT SHAPE, GOES UP 32 FEET 69 INCHES WIDE. \$6,500. 1-401-965-8949



1999 POWER SCREEN MARK 2. Runs and operates well, tight machine, need gone - owner going out of business, \$16,000 OBO. 413-531-2028



AVILA EQUIPMENT SERVICES

508-580-1222

- * ONSITE MOBILE REPAIR
- * SPECIALIZING IN UNDERCARRIAGES
- * RUBBER TRACKS
- NEXT DAY DELIVERY !!
- * AFTER MARKET PARTS (CAT/KOMATSU/JOHN DEERE..)
- * CERTIFIED WELDING
- * HYD. CYLINDER REPAIR

* BUCKET TEETH SUPER V AND CAT STYLE
*** NOW OFFERING LINE BORING**

AVILAEQUIPSERVICES.COM



2007 CAT 320D. 4800 hours, 42" Bucket w/teeth, 30" shoes, **\$75,000.**



2011 CAT 311DLRR. 3800 hours, blade, hydraulic coupler, dbl plumbed, security panels, backup camera, 36" bucket, 20" shoes, **\$77,500.**



2008 Link-Belt 210X2. 4900 hours, HYD. THUMB, multi-function, coupler, new bottom rolls, **\$60,000.**



2008 CASE 580SM. E-Hoe, 4x4, Hyd. Front Q/C, Ride control, pilot controls, hyd. thumb, 3000 hours, **\$37,500.**



2012 CAT 303.5D CR. Heat, A/C, 22" bucket w/teeth, Q/C, aux. hydraulics, blade, hyd. thumb, 1100 hours, **\$38,000.**



1988 Deere 650G. 2700 hours, recent chains and sprockets, tight blade, runs & moves very good, new seat, 2700 hours, **\$27,000.**

202

TRUCK
 &
 EQUIPMENT
 603-899-2000

www.202truck.com
 RT 202 Rindge NH
 SALES & RENTALS - NO SALES TAX
 FINANCING & DELIVERY



Place Motor Inc.

COMMERCIAL TRUCKS

19 Thompson Rd. Rte 193

Webster, Ma

Since 1923

Call Phil Crowley • 866-449-7482 Ext.213



**2013 FORD F-150 XLT 4X4
ECO-BOOST,
24,475 MILES, TONNEAU COVER.
#405X \$30,900**



**2009 STERLING ACTERRA, 26K GVW,
AUTOMATIC, 103K MILES.
\$29,990 #999B**



**2011 FORD F-150 LARIAT SUPER CAB,
62,000 MILES, ONE OWNER, LOCAL
TRADE. \$27,900 #5355A**



SOLD
**2013 FORD F-250 XLT CREW-CAB,
4WD, 6.2L V-8, AUTOMATIC.
\$38,900 #416X**



**1998 FORD F-800 DUMP, 210 FORD
DIESEL, 6SPD., 5 YD. DUMP, 75,000
MILES. \$7,995**



**2015 FORD F-150 LARIAT CREW-CAB,
4X4, 3.5L ECO-BOOST, GAS, NAV.,
ROOF, HEATED LEATHER, 16K MILES.
\$43,990**



**2013 FORD F-150 STX, 15K MILES,
ONE OWNER, LOCAL TRADE.
\$27,900 #5496A**



**2014 FORD E-350, 15 PASSENGER
VAN, XLT TRIM, 12K MILES. \$27,990
#355XR**



**2014 FORD E-250 CARGO VAN,
LOW MILES, ~~2 TO CHOOSE FROM~~
1 AVAILABLE.
\$24,995 #375X**



**2013 FORD F-150 XLT CREW CAB 4X4, 6.2
L V-8, 7,700 GVW PKG., CHROME PKG.,
TONNEAU COVER, ONLY 2,500 MILES,
RACE RED W/ GRAY CLOTH INT. \$35,900
#420X**



**2014 FORD F-150 LARIAT CREW-CAB,
TWIN TURBO 3.5L V-6 AUTOMATIC,
TUXEDO BLACK W/ ONLY 6,800 MILES.
\$44,900 #415X**



**2014 FORD F-150 LARIAT CREW
CAB
\$38,900 #410X**



BRAKE & CLUTCH INC.
SINCE 1965





Place Motor Inc.

COMMERCIAL TRUCKS

Call Phil Crowley • 866-449-7482 Ext.213

19 Thompson Rd. Rte 193

Webster, Ma

Since 1923

FORD F-SERIES-AMERICA'S BEST SELLING TRUCK FOR 38 YEARS STRAIGHT!



NEW 2016 FORD E-350 WITH 15' UNICELL BOX, V-8, EXTERIOR UP-GRADE, POWER GROUP, X 3 AVAILABLE. #6023



NEW 2016 FORD E-350 W/ 12' UNICELL BOX, 3 AVAILABLE.



NEW 2015 FORD TRANSIT'S 3 DIFFERENT ROOF HEIGHTS AVAILABLE, PASSENGER & CARGO, GAS & DIESEL AVAILABLE. #5117



NEW 2016 FORD F-250 LARIAT CREW-CAB, 4X4, POWER STROKE DIESEL, 8' BED, LEATHER BENCH, 6 PASSENGER. #6084



NEW 2015 & 2016 FORD TRANSIT CONNECTS ! 14 12 IN STOCK, COME TAKE YOUR PICK. #6053

www.placemotor.com • www.placemotor.com • www.placemotor.com • www.placemotor.com



NEW 2016 FORD F-250 & F-350 REGULAR CAB PICK-UPS, GAS & DIESEL, XL & XLT, 9 AVAILABLE.



NEW 2016 FORD F-350 SUPER-CAB, 4X4, LARIAT, 6.7L DIESEL, 20" WB, CHROME PKG., NAV., FX4, AND MORE, BLACK W/ BLACK LEATHER. #6039



NEW 2015 FORD F-750, AUTOMATIC, 300 CUMMINS, 3000 SERIES TRANS., 33K GVW. #5098

www.placemotor.com • www.placemotor.com • www.placemotor.com • www.placemotor.com



NEW 2015 & 2016 FORD F-350 * F-450 * F-550 CHASSIS'S * GAS + DIESEL 2WD & 4WD 53 AVAILABLE IN DIFFERENT CAB CONFIGURATIONS * PICK YOUR BODY *



MASSACHUSETTS OLDEST FORD DEALER SINCE 1923



TOREKU TRACTOR
SALES SERVICE RENTALS
& EQUIPMENT INC.



4 Littleton Rd, Rt2A & 110, Ayer, MA • 978-772-6619




KUBOTA L3430 FACTORY CAB TRACTOR. New Hydrostatic Transmission, 1500 Approx Hours, 9 Ft Woods Back Hoe, HD Front Loader, AD Front Mount 72" Snow Blower, \$28,600.

VISIT US AT WWW.TOREKU.COM



NPK BREAKER MODEL 210A. Completely gone through, never used, no hrs at all - like new. Needs bit, off Kobelco 210; will fit machines that size. Almost \$60K new, selling for \$17,500. Norwalk, CT 203-858-3516, 203-852-1166



KIDRON INSULATED
 12' BODY WITH REEFER UNIT.
 401-434-5900



1995 ROGERS 50 TON DETACHABLE TRAILER, 24FT. WELL, AIR RIDE, NON GROUND BEARING PONY MOTOR, NEW BRAKES, 22.5 RUBBER, NEW PAINT. \$25,000. FOSTER RI, 401-965-8949.

SCHMIDT PORTABLE ABRASIVE BLASTERS FOR RENT OR PURCHASE.

CALL RAPID PREP
877-529-2124



CT • RI • MA • NY **DW** **SAME DAY DISPATCH**

TRANSPORT

CALL DAVID OR LENNY
800-229-9421

WE WILL SAVE YOU MONEY AND PUT A SMILE ON YOUR FACE!

STUMP & BRUSH TRANSPORTATION & DISPOSAL \$600/LOAD

DEMOLITION DEBRIS TRANSPORTATION & DISPOSAL \$1,500/LOAD

120yd Walkers/ 75 yd steel dumps
TOP \$\$ PAID FOR YOUR SCRAP STEEL, COPPER, & ALUMINUM!!!



ASPHALT ONE TON HOT BOXES.
 Towable, complete, 800-464-0573,
www.WestsideTruckEquipment.com



2007 STERLING A9500. DETROIT MOTOR, 10 SPD. EATON FULLER TRANSMISSION, DOUBLE FRAME, 18K FRONTS, 46K REARS, BRAND NEW DUMP BODY, PTO AND DUMP PISTON, \$65,000. KINGSTON, MA 781-760-9212, STEPHEN

BIG WHEEL



TRUCK SALES

FLEET MAINTENANCE



2008 Sterling Acterra, Mercedes diesel, auto, high level interior, Morgan 26'x102" Reefer body, TS-300 Thermo King w/standby. Alum. floor w/Hydoroll floor roller system, swing doors, alum. wheels, well maintained.



2007 GMC C750026' Rack Body w/Rail gate: Duramax Diesel, Allison automatic, under CDL. Please call for details.



2006 KW T30 w/26' x 102" Reefer. 6 speed. New paint and New Tires. Call us for details.



1990 GROVE AT 400: 22 Ton Crane, 7,000 hours, Runs and works excellent. New paint and New Tires Give us a call for details.



1993 TRAILMASTER: 24' Bed w/Lift gate. Isuzu Diesel, Standard. Please call for details.



1968 MACK 10 TON 6X6 TRACTOR:



Cummins power. Heavy Duty Drag Winch. New wet system. Runs and drives excellent. Please call us for details.



POWER BOX PAVER: very good condition. \$4,500



2006 GMC 18' Box Truck: Isuzu diesel, Automatic. Side door, Barn door. \$8,800



2005 FREIGHTLINER M2 w/ 24' MORGAN Box: Mercedes Diesel, 6 speed, air brakes, A/C, 40" Sleeper. Truck runs excellent. \$14,500

42 Quanapaug Road, East Freetown, MA
508-763-5927 • FAX 508-763-2369

www.BigWheelTruckSalesMA.com

WE SELL HEAVY DUTY SNOW PLOW EQUIPMENT • WE EXPORT WORLD WIDE • HEAVY DUTY TOWING SPECIALIST



2013 MORGAN 22'X104"X102" REEFER W/ MAXOM 4TH K LB ALUM. TUCK AWAY GATE, NO REEFER UNIT, \$17,500 INSTALLED. METHUEN MA 1-978-686-1800



2003 CAT D3GXL. 6-WAY DOZER, MINT CONDITION, 600 ORIGINAL HOURS, ONE OWNER, ONE OPERATOR SINCE NEW, OPEN CAB W/HEAT. MACHINE IS LIKE BRAND NEW, USED IN TOPSOIL, BOTTOM IS MINT, LIKE NEW MACHINE LESS THAN HALF NEW PRICE, \$39,500. NORWALK, CT 203-852-1166, 203-858-3516 CELL



2002 FORD F350. 4WD, Dual Wheel, 7.3 Diesel, flat bed with tool boxes, fuel tank & hose reel. Very Reliable, Good Condition. Asking \$11,500. Windsor, CT Call/Text 860-883-9534

SAM'S Tree Service
 "We handle the jobs, the Big Guys turn down!"
401-269-1133
 •Brush Chipping •Tree Removal
 •Tree Pruning •Residential Land Clearing

Get The New
TRUCK AND EQUIPMENT POST
 as soon as it's available!
 Just send an email to
ads@TruckAndEquipmentPost.com
 & put in the subject line
BAG MY MAG!

FREE ONLINE SUBSCRIPTION

NORTHLAND JCB 800-640-6050

SALES - RENTAL - SERVICE - PARTS



2016 JCB 3CX COMPACT BACKHOE LOADER. 6' 5" Wide, 9' Height, Switchable Steering Modes Gives You Access to Extremely Tight Spaces. Power Performance in Small Construction Sites.



2015 JCB 510-56 TELESCOPIC HANDLER. 10,000 LB Capacity, 56' Reach, Cab, Heat, AC, 48" Forks, \$159,500



2012 YALE GDP090 FORKLIFT. 9,000 lb. Capacity, 86/120 Mast Diesel Engine, Solid Pneumatic Tires, Full Cab, Lights, Strobe.



2005 HYSTER S80XMBCS FORKLIFT. 8,000 lb. Capacity, 84/122 Mast, Mono Pedal, 4.3 L. GM - LP Powered, S/S Non Marking Cushion Tires, Lights, Strobe, 3 Fct. LPS.



NEW ADVANCE SC6500 45D. Single-pass cleaning in demanding environments such as warehouses, manufacturing plants, athletic facilities, universities and more.



2016 TAYLOR-DUNN B-210 EE. 36-volt GT Electric Drive system, On-Board Automatic Charger, Headlights, Taillights, and Hydraulic Brakes



23 FOSS ROAD LEWISTON, MAINE

COMMERCIAL SPACE FOR RENT:
 3,000 SQ.FT., 12' DOORS,
 16' CEILING. HEAT INCLUDED
 \$2,500/MO. HOPEDALE, MA
 508-313-2441



Tight Link Fence Co.
 Residential ~ Commercial ~ Industrial
 Mark Dillon
 774-365-0222



1994 FORD L8000 DUMP. 8.3 Cummins, Allison 5 sp. auto, A/B, 36K GVW, 57K miles, 6 new tires, solid cab & frame, perfect interior, plow frame w/air piston, like new 10' full 10 yd heavy duty alum. dump body, only carried sludge, fully serviced, 800-464-0573, www.WestsideTruckEquipment.com

2002 CASE 590 SUPER M. EXTENDAHOE, 4WD, ACS FRONT AND REAR, HYD QUICK COUPLERS, BUCKET, FORKS, ACS ASHBURY SIDE DUMP BUCKET (NEW), 24" BUCKET (NEW), SNOW WOLF ULTRA 120 PLOW W/WOLF WINGS, 3070 HRS., \$43,500. AL, 401-300-9041

1970 FORD L9000 WITH ROLL BACK BODY,
 \$12,500,
 413-268-3600 OR
 413-535-7210



2004 INTERNATIONAL 4300, DT-466, 215HP., AUTO, DIESEL, THERMO-KING W/ SANDBY, 3000# LIFT-GATE. \$15,995 401-944-5200

RAPID PREP LLC

RAPID PREP, LLC IS A FULL SERVICE PROVIDER OF SANDBLASTING AND ALL OTHER SURFACE PREPARATION EQUIPMENT.



RUST NEVER SLEEPS.

NATIONWIDE RENTALS, SALES AND SERVICE

44 Cross Park Avenue, North Kingstown, Rhode Island 02852
 877.529.2124 || www.rapidprep.com || sales@rapidprep.com



CONSOLIDATED TRUCK & EQUIPMENT INC.
 231 Plain St. (Rte.118) Rehoboth, Ma
 WWW.CTEI.INFO



HONEST BOB SAYS, "IT'S TIME TO START THINKING SPRING!!!"



4 Available!

Brand New Challenger Body & Chassis, 26' Long, 54" & 60" Sides & Gate, Single Point 60K suspension, Hardox Body, Hi-Lift Gate, aluminum disc wheels, electric load cover. 16 Ply Tires. Please Call For Pricing



Trailstar 28'x60' smooth side Aluminum Dump Trailer. Aluminum frame, 24.5 tires, aluminum rims, air ride, electric load cover. Please Call For Pricing



BRAND NEW EAGER BEAVER 20XPT TRAILERS. 6' RAMPS. BEST PRICING AROUND. Please give us a call.



THEY'RE BACK and IN STOCK!!!!
 2-way Tail-gate conversion Kits for Steel body Dump Trailers & Dump Bodies, will fit almost any body Also, aluminum kit now available



26' Bibeau Replacement Dump Trailer Body, high lift gate, Hard-Ox Body, 54" or 60" sides, call for price.

CALL US 508-252-3339

CANDIA TRAILER.COM

& LANDSCAPE EQUIPMENT CO
All Prices Cash & Carry! Installation Available!

SAVE TIME & FUEL • WE SHIP!

1-866-761-0196

NH 603-483-2541 • Fax 603-483-2842

35 High St, Candia 4 Coners, Candia NH
 10 Minutes East of Manchester, NH • 1 hour From Boston



UNDERBODY TOOL BOXES - Stainless Steel Hinges & Handles
Powder Coat

Diamond Aluminum Door
(black in color)

24"x18"x18" \$219

30"x18"x18" \$239

36"x18"x18" \$259

48"x18"x18" \$309



Diamond Plate

Aluminum

Underbodies

24"x18"x18" \$279

30"x18"x18" \$294

36"x18"x18" \$339

48"x18"x18" \$429



SANDERS/SPEADERS ARE IN.
Poly Sanders Starting @ \$2,599.
Stainless Steel Starting @ \$4,049

7 TON DUMP TRAILER



USA Made IN STOCK

14' Body Extended Sides to
 36", Ramps, Twin Piston, Battery,
 Powder Coat \$7,095
 Also 10' Body @ \$4,795



4th Season Special.
Ideal Landscaper
Dump Body with
Punched Out
Diamonds Sides On
Top 2/3rds, Latch
& Bail Barn Doors.
Knapheide Is Your
Body Specialist!

INDUSTRY'S BEST



USA Made

NEW GALION DUMP BODIES. 8'
to 11'-6", 10 Gauge High Tensile
Steel, Blasted, E-Coated, Powder
Coated, 6 Grease Fittings,



LANDSCAPE TRAILER
SPECIAL. 16 FT,
STARTING AT \$2,795.



KNAPHEIDE 8' FLATBED. Single
Wheel Body, Body Lights Pkg.,
Southern Pine Treated Deck, No
Racks, Electrodeposition Coating,
In Stock \$1,595



USA Made, HI TENSILE
STEEL BODIES. All Sizes &
Combinations. ON SALE 8 Ft
Ford Style, \$2,995

HARSH HOIST



2.5 to 45 Ton, Single
or Double Piston.
Convert a Flatbed
Body to a Dumping
Body. HOIST &
POWER PACK
Starting @ \$1,585

USA Made



USA Made
20 FT POWER TILT 7 TON
EQUIPMENT TRAILER \$5,995



KNAPHEIDE UTILITY BODIES.
We Stock Many Sizes, S/W & D/W.
Precision Customization, Cash &
Carry, OR Installation - Call Today



USA Made
KNAPHEIDE TRUCK BODIES. In Stock,
All Sizes, Platform 8' - 18' Bodies, SW
& DW Utility Bodies, Rack Bodies, Call
Today!



BUTCHER Dump Power Pac with
control Gravity Down \$495



TRANSFER PUMPS.
Filrite Pumps \$339. G.P.I. \$319.



ALL SIZES
IN STOCK
USA Made
TANKS & PUMPS. Transfer Tanks
- All Sizes. 12' Hose, Heavy Duty
Pump, & Nozzle Plus Tank



8' EZ Slide In Dumper
Body. Hoist and Controls
***Included. \$2,190.**



ALUMINUM FLATBED BODIES. 7'X80"
Fits Ford, Skirt, Lights, Head Board, Rub
Rails w/ Pockets. In Stock 8'X80" Fits
Ford, No Skirt, Lights, Head Board, Rub
Rails w/ Pockets. In Stock



MD75. Pre-Season Pricing Now!



TE8 Series & Options. Pre-Season Pricing Now!



Power V-Plow. Pre-Season Pricing Now!



Pusher Blade For Skid Steers. Pre-Season Pricing Starting @ \$2,200.



200 PLOWS - WE HAVE YOUR NEXT PLOW - CALL US TODAY!!!



12 Ft PUSHER BLADE For Loaders \$3,900



Retractable Step \$109



Shuttle Door \$179



Pintle Plate \$169



15 Ton Pintle Hook \$59



Aluminum Under Body 100 lb Draw & Flip Down Door Tool Box \$459



7' X 12' Mesh tarp & Hardware Kit \$229



Class 5 Universal 2" Service Body Hitch Receiver



Tri-Ball Hitch w/ Pintle Hook \$79



D-Ring. 1" Dia X 4" H X 3" (I.D.) Forged w/ Bracket



Aluminum I-Pack Toolbox \$2295



Conduit Carrier Kit. 8" Dia. and 4" Dia. Tube



Conduit Carrier Box. Diamond Tread Aluminum, 121-3/8" L x 11" W x 6" H \$349

SAVE TIME & FUEL • WE SHIP!

CANDIA TRAILER.COM

**& LANDSCAPE EQUIPMENT CO
All Prices Cash & Carry! Installation Available!**

1-866-761-0196

NH 603-483-2541 • Fax 603-483-2842

35 High St, Candia 4 Coners, Candia NH
10 Minutes East of Manchester, NH • 1 hour From Boston





FRAMINGHAM



Rt. 9 East Bound • Framingham, Ma 01701 •

www.FraminghamFord.com

Dedicated to the Commercial Truck Business for over 40 Years

NEW 2016 F550 CHASSIS IN STOCK NOW



ATTENTION ALL TRUCK BUYERS!!! PLEASE TALK TO US FIRST. WE HAVE THE ABSOLUTE LOWEST PRICES ON ALL OUR TRUCKS



2016 F550 4x4 3-4 yard Dump Body Power Group #14919F



2016 F250's with FISHER 8' plows. Get yours before the snow flies.



OVER 50 AVAILABLE!

You will not buy a TRANSIT for less anywhere! #14917F



SAVE \$10,000

2015 F350 4x4 3-4 yard Redding Dump Body: Diesel, Power Group. Stk#14717F



2015 TRANSIT Chassis with HI TOP Body. Power Group. Ready for Delivery. Call us for all the details.



2016 F550:4x4 4-5 yard Dump, Power Group #14917F



2015 WORKPORT: Power Group, A/C. stk.# 14286V



2015 E350 High-Top KUV: SRW, power group. Stk.#14323V



10 IN STOCK!

NEW TRANSIT CONNECTS.



BRIAN T. MCNULTY
508-532-3215

BRIAN.MCNULTY@FRAMINGHAMFORD.COM

CALL TODAY FOR YOUR LOWEST DUMP TRUCK PRICING!

FORD MOTOR CREDIT COMMERCIAL LEASE AVAILABLE ON ALL VEHICLES. CALL FOR DETAILS. *DEALER RETAINS ALL REBATES. CUSTOMER MUST QUALIFY FOR REBATES ON FMCC FINANCING. REBATES INCLUDE RETAIL CUSTOMER CASH, FMCC BONUS, FORD COMMERCIAL CONNECTION, F-SUPER DUTY LOYALTY. LEASE PAYMENTS REQUIRE 20% DOWN. CALL FOR VEHICLE SPEC DETAILS. NOT ALL CUSTOMERS WILL QUALIFY. PRICE SUBJECT TO CHANGE.†



2001 FORD E-450 XL, 7.3L TURBO DIESEL, AUTO. \$5,995 401-944-5200



1998 FREIGHTLINER FL 80: ALUMINUM FLAT BED W/ ITM KNUCKLE BOOM W/47' REACH. CUMMINS, ALLISON AUTOMATIC, 147K MILES. NEW LOWER PRICE \$24,900 PLYMPTON, MA 866-637-4076



**1 000's of Tires in Stock
13" to 24.5" Available**

- COMMERCIAL TRUCKS
- TOW TRUCKS
- CAMPERS
- FLEETS
- INEXPENSIVE TIRE REPLACEMENT

508-322-4234
www.usedtirewarehouse.com

OPEN 7 DAYS A WEEK

4 Thatcher Lane, Wareham, MA
Located in the Wareham Industrial Park across from Wareham Crossing

BECAUSE EVERYONE RIDES ON USED TIRES....

Taylor & Lloyd, Inc.



2008 INTERNATIONAL 7500, BRAND NEW SHORT BLOCK WITH 350 HP, 8LL, GRAIN BODY DUMP.



2007 INTERNATIONAL 8600 CUMMINS NEW RUBBER, 10SPD, 247K MILES ON THE CLOCK. \$22,500



2009 INTERNATIONAL 8600 T/A CHASSIS. CUMMINS 1SM, AUTOMATIC, 40,000 ON AIR RIDE, 14,000 FRT AXLE, PTO



2005 IH 8600 single axle tractor with cummins power 10 speed air ride 324k miles \$16,000

SEE OUR INVENTORY: TAYLORANDLLOYDTRUCKS.COM



2010 INTERNATIONAL 4300 DT466, SPRING SUSP. ALLISON AUTO W/ PTO, 24FT. KIDRON REEFER W/THEMO KING T600. EXTRA CLEAN SOUTHERN TRUCK. WILL SEPARATE CHASSIS & BODY. CALL\$S



2008 INTERNATIONAL 4DR CREW CAB, ALLISON AUTO, SPRING RIDE, 24FT. BOX WITH ALUM LIFT GATE, DT466, JUST OVER 100K MILES. CALL!!!!



2012 INTERNATIONAL 4400 AUTO TRANS, DT466, ALLISON AUTO, GREAT OIL OR DUMP TRUCK, 33GVW 73K MILES, CALL.

BRAND NEW 4300 CUMMINS POWERED, IN STOCK!!!

1-617-429-3370

Call Jack Coakley
8 Railroad Avenue Bedford, Ma

M.A. Frazier **M.A. FRAZIER CO., INC.**
 ENTERPRISES, INC. **508-349-7969**



We custom build to your specs
Same day turn around in many cases
Chains for all size spreaders made to order
We also build chains for pavers and bark blowers



- CLOSED LOOP GROUND SPEED CONTROL SYSTEMS AVAILABLE
 • CASH AND CARRY OR INSTALLED.
- LIQUID PRE WET SYSTEMS IN STOCK AND READY TO BE MOUNTED.
 • WE BUILD CONVEYOR CHAINS! ANY SIZE, ANY STYLE!
- DOWN EASTER SPREADER DEALER, FROM 1 YARD TO 20 YARDS
 WE CAN CUSTOM DESIGN ANY SIZE SPREADER.



2008 KUBOTA B26 LOADER/BACKHOE.
 775 ORIG hours, hydro., R4 tires, 1C operation, quick-detach Kubota backhoe, skid steer quick hitch, forks available, \$22,500. 860-307-7473



1994 CATERPILLAR 416B BACKHOE. 6027 HRS, 4X4, HEAT, STANDARD HOE, NEW CUTTING EDGE, 3RD HYDRAULICS TO FRONT, GOOD RUBBER, NICE TIGHT OLDER MACHINE. ASKING \$23,500 OBO. MIDDLETOWN, CT 860-398-0925, STEVE

EQUIPMENT 4 RENT **RENT OUR EQUIPMENT. OWN OUR COMMITMENT.**
PARTS & SERVICE 4 YOUR EQUIPMENT

	2011 CAT 246C. A/C, Super Clean, 317 Hours, 72" Bucket, Aux Hyd., \$34,595		2008 LULL 1044C-541I ROUGH TERRAIN FORKLIFT. Foam Filled Tires, 5100 Hrs, Enclosed Cab, \$60,595		2006 CAT 420E. A/C, Rear Hydraulics, Extend-A-Hoe, 3100 Hours, \$49,995
	2004 JD450H. 6500 Hours, Good Tracts, A/C, 6-Way Blade, \$29,995		2008 IHI 35N2. 1900 Hours, Hydraulic Thumb, Good Tracks, \$23,495		2010 CAT 304CCR. 2900 Hours, Hydraulic Thumb, Good Tracks, \$39,995
	1997 CAT D6R. 8900 Hours, Recent Bottom Work, \$68,995		2013 304E. 1000 Hrs, Hydraulic Thumb, Quick Coupler, Good Tracks, Clean Machine, \$44,595		2003 DYNAPAC CA250 84" ROLLER. 3000 Hours, \$39,900
	2012 CAT 272D. 562 Hours, 72" Bucket, A/C, Counter Weight Pkg, Aux Hyd, \$44,995		2011 CAT 262C. 68" Bucket, 390 Hours, Aux Hyd, Counter Weight Pkg, 2 Speed, A/C, \$39,995		2005 CAT 314LCR. 3500 Hours, Blade, Manual Thumb, \$69,495

508-583-5500 • 41 LEDIN DRIVE, AVON MA

NEED A LOAN
for the
Equipment
you see?



NEED CA\$H
and own
equipment?

UNIVERSAL

FINANCE CORP.

BUYING: Call TODAY and we will get you approved in less than 24 hours. No bank Statements, W2's or tax returns. We keep it simple and convenient!!

SELLING: Call TODAY and we will get you approved in less than 24 hours to borrow cash against the equipment you already own.

Universal Finance Corp. will help you get a loan quickly. Don't miss out on the equipment you need and want today. Just need some cash for working capital? Call today and we will come inspect your equipment and loan you cash against what you already have.

IT IS SIMPLE AND EASY TO APPLY!

CALL TODAY - 781-439 6000

www.universalfinco.com

2 Linden St. ▪ Reading, MA 01867 ▪ Tel: 781.439.6000



BEAUREGARD EQUIPMENT
14 Gibson Road
SCARBOROUGH, MAINE



207-885-0600



2015 CASE SR220. Full Cab, Heat & AC, Suspension Seat, Keyless Start, Coupler, 78" Bucket, w/ BOCE, 2 Speed, Block Heater, LWB to Lift & Haul More Material, Runs All Day Without Refueling, 76 Hp, **\$44,200.**



2015 CASE CX55B. Weighs 12,295 and Digs 12'10", Key Features, Easy To Trailer, Work Within Tight Areas, And Handle Big Excavating Jobs, AC, 15.7" Tracks, 24" Bucket, Auxiliary Hydraulics, **\$78,600.**



2015 CASE 721F. 3.4 Cubic Yards, Z-Bar, Air Suspension, AC, Ride Control, 20.5 L2 Radials, **\$274,203.**



2013 DEERE 190DW WHEEL EXCAVATOR. Hydraulic Thumb, Tilt Bucket, Dig Bucket, Low Hour Municipal Trade. **\$166,900.**

0% Financing for 48 Months on New Select CASE Equipment



1997 KALYN, 48X102 .
35 ton Sliding Axle Trailer, 12,000 lb. winch, \$15,000 OBO. Lou Jr., 401-783-5979

CLARKE FORKLIFT:
4K Lb. lift, runs great, \$1400 OBO, 401-486-0034





2000 FORD F350 DUMP. Powerstroke Diesel, 4x4, dual wheel, excellent condition, #3017, \$13,995, www.centermotorstrucks.com, 866-556-3177

BEAM TRUCK & BODY INC.

RI Dealer #647
433 CUMBERLAND HILL ROAD, WOONSOCKET, RI 02895




401-767-2639




NEW - USED & RECONDITIONED DISPOSAL EQUIPMENT



MACKS, PETERBILT & WESTERNSTAR ROLL OFF'S IN STOCK !!



2010 INTERNATIONAL 7400, 42,000 MILES, DUAL DRIVE W/ 22 YD. HEIL AUTOMATED. \$70,000



2003 MACK LE, 20 FRONT 52 REARS, DUAL DRIVE CHASSIS. \$21,500



2003 INTERNATIONAL 7400, 14 & 46 AUTOMATIC, W/ 25YD. MCNEILUS, OVERHEAD HOIST. \$30,000



2016 PETERBILT AUTOMATIC, 33,000# GVW, MOUNTING NEW AMERICAN 25,000 LB. HOOK LIFT W/ 54" HOOK.



2016 FORD F-650, 300 HP., AUTOMATIC, NEW AMERICAN 18,500 / 20,000 LB. HOOK LIFT.



2013 INTERNATIONAL UNDER CDL W/ NEW 18,500 / 20,000 LB. HOOK LIFT. \$78,600



NEW MACK 20 & 52 AUTOMATIC W/ 75,000 LB. AMERICAN ROLL-OFF, 1 DONE, ONE STARTED.

WWW.BEAMTRUCK.NET

COLONIAL

COLONIAL-WEST CHEVROLET OF FITCHBURG

CALL US TOLL FREE 866-263-8712



2015 CHEVY SILVERADO 3500 HD AirFlo Dump: Keyless entry, snow plow prep., Stainless tool boxes, Trailer brake. Stk.# 15017. M.S.R.P.: \$50,389 GENO'S Super Saver price: \$41,499



Brand New 2014 CHEVY EXPRESS 12' TOOL PRO: All the stuff you need in one compact unit. LED lights, power everything and more. Stk.# 14995 M.S.R.P.: \$46,195 Geno's Special: \$38,798



2015 CHEVY EXPRESS 12' Duracube: Back-up camera, LED lights, Ladder Racks. All The good stuff. Stk.#15699 M.S.R.P.: \$51,950 Another Geno's Special: \$42,499



2015 CHEVY EXPRESS 15' DeJana Cutaway: 159" WB, Every option. Pine Wood floor. Stk.#15295 M.S.R.P.: \$43,665 Colonial West Price: \$36,999



2015 CHEVY SILVERADO 3500 HD 9' AirFlo Dumps: 2 available at this remarkable price. Duramax diesel, Allison automatic, All terrain tires, SS tool boxes, Pocket extensions, Stirrup steps, Combo hitch. MSRP: \$59,989. Buy one or buy 'em both for just \$50,299 Each



2015 Chevy Silverado 3500 LT Chassis: Duramax diesel, Allison automatic, Remote start. Every option. Trailer brake, plow prep and trailer hitch. Stk.#15801 MSRP \$50,815 Geno's price to you \$42,499



2012 TOYOTA TACOMA 4x4 Double Cab: Bed liner, tow package. ONLY 25K miles! Here's a Christmas for all good little girls and boys. Even if you were not that good, this deal really is! \$27,999. stk.# 15268B



2013 F150 4x4 Platinum Edition: heated & cooled leather seats, sun roof, tow package. only 77k one owner miles and he was an old chap who never went over 35 miles an hour. \$39,999.... stk.# 15078A



2010 RAM 1500 Crew Cab 4x4: yeah, it's got a HEMI V8, full power, tow package, tow mirrors, RAM box...this is just a great place to keep all your rams. \$25,999 stk.# 15893EE



2014 CHEVY SILVERADO 1500 Double Cab 4x4: LT package, Z-71 package, Tow package, Christmas package! Heated leather seats. One owner. Non smoking owner. Stk.# 3860A \$29,999



2008 FORD F450 Crew Cab Lariat 4x4: Diesel, Leather, Navigation, Alloys. ONLY 79k miles. stk.# 15370A \$29,999



2009 CHEVY SILVERADO 3500 Crew Cab 4x4: Duramax diesel, Allison automatic, Full power, Tow package. Only 80K miles. stk.# 3872 \$34,999

314 John Fitch Hwy • Fitchburg, Ma 01420



WWW.COLONIALWESTCHEVYTRUCK.COM

COME SEE YOUR DREAM TRUCK, BEFORE ITS GONE



All prices, specifications & availability subject to change without notice. Prices include rebate, comm. rebate, conquest rebate* USAA Private Offer cash & trade-in bonus cash prices do not include tax, reg. & dealer doc fees. If you're reading this line print it's because you're looking for the best deal. If that's the case call Geno for any questions you may have, thank you! Conquest rebate must have 1999 or newer Non GM vehicle in your household.

**HEY! IT AIN'T OVER TILL
THE FAT LADY SINGS.**



METROPOLITAN TRUCK CENTER INC.

1074 Turnpike St. Stoughton, MA 02072

www.metropolitantruck.com

866-514-1214

PUT YOUR 1/2 TON TO WORK & MAKE SOME MONEY!!



**THE
WESTERN HTS IS
A FULL SIZE,
FULL-FEATURED
SNOW PLOW
DESIGNED
FOR TODAY'S
LIGHTER 1/2 TON
4WD TRUCKS!**

ONE-PIECE POLY HOPPER



**AVAILABLE IN THREE SIZES.
1.5, 1.8 AND 2.5 CUBIC YARDS,
STAINLESS STEEL BOTTOM SILL.
MAKES CORROSION
A THING OF THE PAST**



**OUR WINTER \$ALE AND INSTALLATION \$PECIAL
IS GOING ON NOW PLEASE CALL US FOR YOUR APPOINTMENT**




Lowbed
Johnson

1-800-660-2412

Moves Construction Equipment
Serving Massachusetts and Southern New Hampshire



KUBOTA R420 ARTICULATED LOADER WITH BUCKET AND FORKS, front and rear remotes, \$19,900, Belchertown, MA, 413-478-9790



2003 FORD F350 XL. 4x4, 4 door extended cab, rust-free cab, perfect vinyl interior, tow pkg, never plowed, 6.0 diesel, auto, A/C, 180K miles, always serviced, runs well (but sometimes will steam out of tailpipe, other times doesn't; could be ERG problem), driveable, 800-464-0573, www.WestsideTruckEquipment.com



2002 WA180PT CAB, A/C, Q/C, 2 CY BUCKET, 17.5 RUBBER, IT FRONT, 6300 HOURS. RUNS GREAT!
\$42,500
CALL: 603-623-3669



2006 GMC 7500 W/NEW SWITCH-N-GO SYSTEM. UNDER CDL, DURAMAX DIESEL, AUTOMATIC. CALL CHRIS FOR PRICING 866-637-4076



2000 JOHNSTON 3000 SWEEPER, John Deere Power, recent municipal trade, Working Condition, 6400 Hours, Includes Extra parts, \$8,500. Londonderry, NH, 800-458-3867

SALAMI ISUZU TRUCKS
124 NORFOLK AVE BOSTON, MA

THE ISUZU iLEASE

- ★ 1st Month and Security Month Due At Signing
- ★ Walkaway At Lease End or Pay The Purchase Option.
- ★ All Advertised Vehicles In Stock And Road Ready
- ★ Lease Just Chassis and Transfer Your Body.

 <p>\$895/mo</p> <p>2016 ISUZU NRR. Diesel, 19,500 GVW, 20 Ft Morgan Body, Translucent Roof, E-Track, Walk Ramp, Keyless Entry. #0723. ISUZU iLEASE - 48 Months, \$895/mo, 35,000 Miles Per Year</p>	 <p>\$781/mo</p> <p>2016 ISUZU NPR HD. Gas, 14,500 GVW, 12 Ft Aluminum Landscape Dump Body, All Power Option. #0691. ISUZU iLEASE - 48 Months, \$781/mo, 25,000 Miles Per Year</p>	 <p>\$709/mo</p> <p>2016 ISUZU NPR HD. Gas, 14,500 GVW, 20 Ft Morgan Dry Freight Box, Translucent Roof, E-Track, Walk Ramp, All Power Option. #0485. ISUZU iLEASE - 48 Months, \$709/mo, 25,000 Miles Per Year</p>
 <p>\$639/mo</p> <p>2015 ISUZU NPR. Gas, 16 Ft Morgan Van, E-Track, Walk Ramp, All Power Option. #5170. ISUZU iLEASE - 48 Months, \$639/mo, 25,000 Miles Per Year</p>	 <p>\$799/mo</p> <p>2015 ISUZU NRR CAB & CHASSIS. Swap Your 18-20 Ft, Air, Power, Seatcovers, Heated Mirrors, #3132. ISUZU iLEASE - 48 Months, \$799/mo, Free Service For 2 Years/60,000 Miles, 35,000 Miles Per Year And Walk Away At End</p>	 <p>\$729/mo</p> <p>2015 ISUZU NPR HD. Gas, 14,500 GVW, 12 Ft Utilmaster Trademaster Body, All Power Option. #0211. ISUZU iLEASE - 48 Months, \$729/mo, 25,000 Miles Per Year, Walk Away At End</p>

CALL JOHN CIAMPAGLIA 781-645-2356

TASCA



860-829-3714

www.TASCAFORDTRUCKCT.com

Ask For Shawn McLaughlin



FORD F450 XLT UTILITY BODIES IN STOCK, READING ALUMINUM



Ford F550 Dump Bodies



Ford Transit And E Series Models



Ford Plow Trucks Now In Stock

DEJANA
Truck and Utility Equipment Co.

HARTFORD TRUCK EQUIPMENT

JC MONROE
SUPREME TRUCK EQUIPMENT

Brake & Clutch Inc.

250 Webster Sq. Rd • Berlin, CT • www.TASCAFORDTRUCKCT.com



LS TRACTOR 37HP WITH HYDRASTATIC DRIVE, HEAT AND AC, FRONT MOUNT SNOW BLOWERS AVAILABLE, 860-928-5748



2003 FORD SUPER DUTY F-350 SRW REG CAB RED W/ FISHER PLOW, 4x4, only 75K miles, #2878, \$14,995, www.centermotorstrucks.com, 866-556-3177

EARL WARWICK SALES & SERVICE



Hot Water Pressure Washer

New Starting at \$2195

Used Starting at \$895

Rent To Own \$1.00

Onsite Repairs

35 Years Serving NE

CALL 617-899-8775



KOEHRING HEAVY DUTY BANTAM EXCAVATOR. 2218 HOURS, DETROIT POWER, RECENT REPACKED PINS, ORIGINAL PAINT, OWNERS MANUAL, TRACKS WILL NEED ADJUSTMENT, GOOD CONDITION, \$8,000. 860-928-7491



1968 GMC EM5500. 305, V-6, 5 spd., low miles, runs great, 750 X 20 tires, rare air brakes, \$2500 OBO. NY 607-434-4919



231 Sheep Davis Road, Concord, NH 03301 • 603-225-6621

www.beauregardequip.com

Get 1.25% Financing for up to 60 Months on NEW CASE Equipment



2013 CASE 580SN WT
1200 Hours, Heat, A/C, Rear Aux Hydraulics, Front Aux. Hydraulics, Backhoe Pilot Controls, 4x4, 82" Front Bucket, 24" Rear Bucket.
Stock # N/A \$78,900



2015 CASE 121F LOADER
10,800lb Operating Weight, 1.05 Yard Bucket, Heat, A/C, Hydraulic Universal Quick Attach, Aux Hydraulics, Radio
Stock #NL3997 \$82,000



2015 CASE CX36
17 Hrs, 8,400lb Operating Weight, Heat, A/C, Counterweight, 18" Bucket, Blade, Aux Hydraulics
Stock #NFTN66290 \$57,000



2001 Kobelco SK210LC
Cab, Heat, 9,307 Hrs, 30" Bucket, Aux, Hydraulics, New Batteries, Some Dents, Runs Well
Stock #UE9840 \$39,500



2015 CASE 621F
Enclosed Cab, Heat, A/C, Heated, Air Ride Seat, Radio, JRB Quick Attach, 3yd Bucket, Cold Weather Package, Ride Control, Mirror Kit, 300 Hrs
Stock #NL3490 \$169,500



2012 Kobelco SK140SR
1,756 Hrs, Heat, A/C, Aux. Hydraulics, 30" Pads, Counterweight, Blade, 30" Bucket, Hydraulic Thumb, Tilting Bucket.
Stock #UE7080 \$111,900

6 Enterprise Drive
Londonderry, NH 03053
sales@donovancompany.com



603-669-2250
1-800-458-3867
Fax: 603-669-0501



**INTRODUCING THE NEW FISHER STEEL-CASTER™
FISHER POLY-CASTERS™ 1.5, 1.8, 2.5 IN STOCK NOW**

LARGEST AUTHORIZED FISHER DEALER IN TAX-FREE NH



SALES • SERVICE • PARTS • REPAIR



1-800-458-3867

**XV2™ PLOWS IN STOCK & AVAILABLE NOW
& NEW FOR 2015 HD2™ & HDX™ SNOW PLOWS**



WWW.DONOVANCOMPANY.COM



GALION 503 MOTOR GRADER.
6 cylinder gas engine, ROPS canopy, manual transmission. Excellent condition. Turn key, ready to go to work, \$14,500 OBO. 508-325-3119



1992 FORD L9000 CUMMINS DIESEL,
40K rears, 18K front, Vector Catch Basin Cleaner, will separate, clean unit, 860-984-8989



2001 GREAT DANE REFER TRAILER, 53' x 102".
Air ride with barn doors, Thermo King unit w/29,074 hours, \$9,000 OBO. 401-783-5979, ask for Lou Jr.



FARMALL CUB TRACTOR WITH SNOW PLOW, \$2900. EXCELLENT CONDITION 860-928-5748



SYSTEM ONE ALUMINUM LADDERS FIT MOST 8 FOOT BEDS, \$500/ OBO, 866-559-4875 X11



KIOTI RX6010 POWER SHUTTLE CAB, heat, air, rear hydraulics, loader, quick attach, 60 HP 4 year warranty \$36,995 cash, Belchertown, MA, 413-478-9790



1975 MACK R685ST. 237, 5 spd., Jake brake, 0 miles on in-frame, overhaul and clutch. Real nice shape, Show or Go, \$8000. NY 607-434-4919



1985 INTERNATIONAL 1954, 81,626 Miles, 152 WB, 5 Speed Trans, CD / Radio, Good Rubber...\$4,900 Call Scott at 781-439-6000



2005 INTERNATIONAL PLOW TRUCK 7400 SERIES ALL SEASONS BODY W/SANDER 6 WAY POWER ANGLE PLOW, Central hyd, truck is loaded, PW, PL, ONLY 40,000 miles on it \$48,500, 860-625-2385

PATRIOT TRUCK CENTER

401-944-5200



2003 FORD F-550 SD XLT, V8, 7.3 TURBO DIESEL, AUTO, 173,321 MILES, A/C, PW/PL, W/ 9' DUMP, ONE OWNER. \$14,995



2008 CHEVY 3500 LS 4X4, 6.0L GAS, AUTO, 94,177 MILES, W/ PLOW. \$15,995



2005 FORD F-350 SD XL, 4X4, 6.0L DIESEL, AUTO, 100,608 MILES, NEWLY REBUILT MOTOR, 13K GVW, 1 OWNER, CLEAN UNIT. \$16,995



2005 FORD F-550 SD XL, 4X4, DIESEL, AUTO, 17,500 GVW, 12' ALUM. TRUCK CRAFT BODY W/ REMOVABLE SIDES & REAR DOORS, TOW HITCH, 1 OWNER, CLEAN UNIT, SHIPPING AVAILABLE. \$27,995



1999 FORD F-450 SD XL, 4X4, V-10, AUTO, GAS, 100,432 MILES, 10' DUMP W/ NEW FLOOR, 9' PLOW, TOOL BOXES, TOW HITCH, NICE RUBBER, SAFETY INSPECTED, READY TO WORK, SHIPPING AVAIL. \$12,995



2001 ISUZU NPR, 4 CYL. TURBO DIESEL, AUTO, 103,423 MILES, A/C, PW/PL, TOW HITCH, 14' POWER UP/DOWN BODY, 12,000 GVW, CLEAN UNIT, READY FOR WORK. \$12,995

197 SIMMONSVILLE AVE JOHNSTON, RI
VISIT WWW.PATRIOTAUTOANDTRUCK.COM

Southern Rhode Island Equipment 1-401-640-9303

111 PLAN WAY, WARWICK, R.I. 02886

WWW.SRISALES.NET

FFC • BRADCO • MCMILLEN • MAJOR • SWEEPSTER • HARLEY

HARLEY RAKES



6 FT HYDRAULIC ANGLE, STARTING AT \$7,400

ROCK BUCKETS



STARTING AT \$1,500, IN STOCK!!

72" PICKUP SWEEPER



72" PICK UP SWEEPERS.. \$3,950



VIBRATORY ROLLER

CALL FOR PRICING

ROOT RAKE



CALL FOR PRICING

TREE SHEAR



\$4,550



PREPATOR

CALL FOR PRICING

BRUSH CUTTER



5FT- \$4,300 - 6FT- \$4,600

AUGER'S IN STOCK



\$1,975.00



TILLER

\$4,550

5500LB FORKS



\$925

IN STOCK

STUMP GRINDERS IN STOCK



STARTING AT \$6,000

FINANCING AVAILABLE / PALADIN ATTACHMENTS.

GO TO PALADINBRANDS.COM FOR FULL LINE OF ATTACHMENTS.

Southern Rhode Island Equipment 1-401-640-9303

111 PLAN WAY, WARWICK, R.I. 02886

DYNAPAC

GENERAC

Husqvarna

MULTIQUIP



**WALK BEHIND HARLEY RAKE
CALL FOR PRICING !**



**(2) TAKEUCHI TL140'S
2800 HRS. / 3800 HRS.
CALL FOR PRICING. FINANCING AVAILABLE !**



**MILLER CURBER'S
CALL FOR PRICING, FINANCING AVAILABLE !!**



**RUBBER TRACKS
FOR ALL MAKES AND MODELS
CALL FOR PRICING !!!**

SALES • SERVICE • RENTALS • PARTS
FULL LINE OF SKID STEER ATTACHMENTS AVAILABLE. **WWW.SRISALES.NET** **Takeuchi**
GO TO **WWW.PALADINBRANDS.COM** The Power of Product and Support

www.jobsiteequipment.com • www.jobsiteequipment.com • www.jobsiteequipment.com • www.jobsiteequipment.com • www.jobsiteequipment.com

JOB-SITE EQUIPMENT CORP.

888-339-5868
401-785-9800
www.jobsiteequipment.com
sales@jobsiteequipment.com • Delivery Worldwide

11 O'Keefe Lane, Warwick, RI 02888 • Exit 15 Off of I-95

SERVICE & PARTS FOR ALL MAKES AND MODELS !



2005 CAT 308CCR
17,730#, 30" BUCKET!
BLADE! PLUMBED!
STARTING AT \$39,900



1968 JOHN DEERE
544 • 19,335#,
.5 YD-2YD., BUCKET!
GOOD TIRES! GOOD BRAKES!
\$22,900



1981 JOHN DEERE
644B • 28,100#,
2.4YD BUCKET!, GOOD TIRES,
GOOD BRAKES! HYD. QUICK
COUPLER! **\$26,900**

WE REPAIR HAMMERS **HOURS: M-F 7:30-5:00, SAT 8:00-12:00**
FINANCING AVAILABLE / SE HABLA ESPAÑOL



FREIGHTLINER FLATBED. Vulcan 16,000 lb. bed w/8,000 lb. winch & 3,500 lb. wheel lift, Mercedes motor w/Mercedes smart shift auto trans, 25,500 GVW, \$25,000 OBO. 401-783-5979



2004 FORD F350 SUPER CAB 4X4, diesel, FX4 Off Road, nice truck, #3041, \$14,995, www.centermotorstrucks.com, 866-556-3177

NEW & USED HOODS CLEARANCE!!!
International, Kenworth, Western Star, Ford, Freightliner, Peterbilt and Volvo, starting at \$200., Winchester, NH 603-239-7008

2013 INTERNATIONAL DURASTAR.
AUTOMATIC, UNDER CDL, AUTO AIR BREAKS, 26K GVW, AC, 55K MILES, 22.5 RUBBER, VERY CLEAN TRUCK. ASKING \$42,500. FITCHBURG, MA 978-804-7194





GALVY

Rust & Corrosion Resistant



MARAUDER DUMP BODY

- A-60 GALVANNEALED STEEL
- DOUBLE WALL CONSTRUCTION
- QUICK RELEASE TAILGATE



PLATFORM & LANDSCAPE

- A-60 GALVANNEALED STEEL
- SWING SIDE DOOR
- WELDED CAB SHIELD

ALUMINUM OR STEEL

ENCLOSED SERVICE BODIES FORD TRANSIT CLOSED BACK CHASSIS



CLASSIC II SERVICE BODY

- INCREASED AVAILABLE PAYLOAD
- WEATHER-TIGHT STORAGE
- CUSTOMIZED COMPARTMENTS
- CORROSION RESISTANCE



TRANSIT SERVICE VAN (CSV)

- QUIET - REDUCE ROAD NOISE. 100% ALUMINUM CONSTRUCTION
- DRY - SEPARATE PARTITIONS, ISOLATED CAB FROM BODY.
- SECURE - NO ACCESS TO TOOLS IF CAB COMPROMISED.

1-800-322-1111

www.BrakeAndClutch.com



Truck Bodies & Equipment
63 Bridge St. Salem, MA

POWER POINT

GENERATOR POWER SYSTEMS

New & Used Generators
Sales and Service


Call Paul

508-930-9589

Don't Be Left Without Power!!!



50KW KOHLER/SPECTRUM.
Nava Star Diesel, 183 Hours.
Asking \$17,500



45KW KOHLER.
6 Cylinder Ford, 81.6 Hours, Unhoused.
Asking \$8,500



50KW GENERATOR. Cummins, 500 Hours.
Housed Unit, Base Tank, 4B Engine,
Asking \$10,500.



2007 MTU/KATO LIGHT 100kW. 8.1L
V8 Turbo Charged, 82 Original Hours.
Asking \$14,500



D40P Cat/Olympian Perkins Engine,
Low Hours, Two Available.
Asking \$9,500 Each



CUMMINS QUITE SITE 50KW.
B3.3L Sound Housed, Base Tank.
Asking \$11,500



60KW GENERAC.
V10 Ford, Low Hours, Unhoused Unit,
Asking \$8,500



60KW INGERSOLL RAND.
Very Clean, Low Hours, John Deere Turbo
Charged Engine, Three Available.
Asking \$12,500 Each



20KW MQ 3 CYLINDER DEUTZ,
2007, Approximately 20 Hours, All Aluminum
Enclosure, Asking \$9,500



60KW KOHLER. John Deere Engine, Kohler
Dec550 Digital Controller, All Aluminum
Enclosure, Asking \$14,500



500KW CATERPILLAR 3412. Prichard Brown Enclosure, Approximately 500 Hours.
Asking \$42,500

SACO OFFICE
11 Mill Brook Road
Saco, Maine 04072

RANGELEY OFFICE
17 Arbor Way
Rangeley, Maine 04970

RAYNHAM OFFICE
272 Hill St.
Raynham, Mass 02767

SALES - 24 HOUR EMERGENCY SERVICE - RENTALS



37 County Road
Route 106
Plympton MA 02367
PH: 781-582-1378
FAX: 781-585-4438



**SNOW DOGG by
BUYERS: 12' &
16' AVAILABLE
STARTING AT
JUST \$3,960**



**LARGEST
INVENTORY OF
DOWNEASTER
SANDERS &
PARTS ON THE
SOUTH SHORE.**



**BOSS PLOWS IN
STOCK!!! Call
To schedule an
appointment today.**



1994 JOHN DEERE 410D 4x4 Backhoe Loader: Ext. Hoe, 4 in 1 bucket, Clean well maintained machine. 7,500 hours, 50% rubber. \$19,700



**FULL SERVICE BODYSHOP.
SANDBLASTING AVAILABLE FOR ALL SIZE EQUIPMENT.**

**SALES,
SERVICE,
PARTS**

**CALL TOLL FREE: 781-582-1378
WWW.CAREYTRUCKEQUIPMENT.COM**

**CUSTOM METAL
FABRICATION
AVAILABLE**



37 County Road
Route 106
Plympton MA 02367
PH: 781-582-1378
FAX: 781-585-4438



**1996 Ford L9000
Hood, \$1,200.**



**Cummins Engine
available: M11 w/9
Speed, \$2,500.**



**1996 Ford L9000
Cab, very clean, next
to no rust, \$1,600.**



**46,000 LB
Hendrickson,
\$3,500.**



**Used Flatbeds
starting as low as
\$800.**



**PERKINS 4 CYLINDER
DIESEL.
STARTING AT \$1,300.**



**50-100-gallon Aluminum
Fuel Tank, round and
D-style, starting at \$200.**



**Hoods Available, no damage
(2) T800, (1) T300, (1) Pete
330, starting as low as \$800.**



**Good Used Tires, 11R24.5,
good rubber on aluminum
budd rims, \$200. each**



Autocar Hood \$800.



**20,000 LB Front
Axle, \$1,900.**



**Peterbilt Parts
available.**

**SALES,
SERVICE,
PARTS**

**CALL TOLL FREE: 781-582-1378
WWW.CAREYTRUCKEQUIPMENT.COM**

**CUSTOM METAL
FABRICATION
AVAILABLE**

STONEHAM



**MANY 2015 CHASSIS
IN STOCK! CALL
AND BUILD YOURS
TODAY!!**

NEW FORD COMMERCIAL TRUCKS!!!!



CALL

NEW TRANSIT CUTAWAY KUV ENCLOSED UTILITY. CALL!!!!



CALL

Plow season is coming don't wait over 100 plow trucks available.



CALL

2015 FORD E-350 UTILITY BOX'S, 10 & 12FT. IN STOCK, CALL!!!!



CALL

2015 & 2016 FORD F550'S, BUILT, READY TO GO. CALL!!!!



CALL

2015 & 2016 F550'S multiple colors available. 4x4 Diesel 9ft or 12 ft landscape body with pull out ladder for side access door and a swing out aluminum gate that doubles as a ramp.



CALL

NEW FORD TRANSIT CONNECT'S! MANY IN STOCK!!!! CALL!!!!



CALL

2015 & 2016 FORD F450 & F550'S, IN STOCK, MULTIPLE COLOR'S, SHORT & LONG WHEEL BASES, CALL!!!!



CALL

NEW E350 STAHL ENCLOSED UTILITY SRW & DRW, HIGH TOP AND LOW TOPS, IN STOCK NOW! CALL!!!!



CALL

RED, WHITE OR BLACK AVAILABLE!

2015 & 2016 FORD F350'S, 2WD & 4WD, GAS & DIESEL'S, DUMPS, IN STOCK & READY TO GO!!!! CALL!!!!

USED TRUCK SPECIALS



CALL

2014 FORD STEP VAN WITH 21K MILES, LOTS OF EXTRAS ADDED!! \$34,999. CALL!!!!



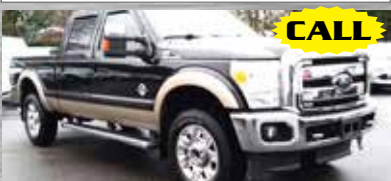
CALL

2013 FORD SUPER DUTY F350, DRW, XLT, 18K MILES, STK#152970A. \$51,983. CALL!!!!



CALL

2015 FORD TRANSIT WAGON, 148" LOW ROOF, XLT SLIDING RH DOOR, STK#15018P \$29,983



CALL

2012 FORD SUPER DUTY F350 SRW 4DR CREW CAB, LOADED, 29K MILES, STK#161048A. \$44,995. CALL!!!!



CALL

2014 FORD SUPER DUTY F350 SRW, 4WD CREW CAB LARIAT, STK#154261A. \$52,995



CALL

2007 FORD F350 4X4, XLT LOADED, DIESEL, ALLOYS,

Mon-Fri 8:30am-8pm Sat 9- 5pm Sunday 12-5

ALL PRICES NET & INCLUDE ALL AVAILABLE REBATES TO DEALER

Call Bill Pollack 1-617-733-0773 or billpollack@stonehamford.com



1987 INTERNATIONAL 1900 DUMP.
 210 DT466, 5-2 speed, A/B, 33K GVW, new clutch, brakes, cans tec, etc., 120K miles, 10' 7 yard body, 3 chutes, tarp, pintle, runs well, 800-464-0573, www.WestsideTruck-Equipment.com



2008 CAT 312C:
 5,000 HOURS, PLUMBED, COUPLER. \$69,000
 508-855-2441.
 HOPEDALE, MA

37 County Road
 Route 106
 Plympton, MA 02367
 PH: 781-582-1378
 FAX: 781-585-4438



COMPLETE SNOW AND ICE CONTROL



Sander chains



Poly Truck Fenders

CAREY AUTO HAS A FULL LINE OF PARTS AND ACCESSORIES FOR TRUCKS AND TRAILERS!



Federal Signal Signal



MicroPulse Lights



CUTTING EDGES

BOSS RI's Authorized Distributor
 SNOWPLOW

Installation Service & Repair

FISHER SNOWPLOWS

Exit 25 OFF I-95
 OnSiteTruckRepairInc.com
401.722.3160
 34 Colfax Street Pawtucket, RI

General Truck & Trailer Repair

Check Out Our New Line!

Steel & Aluminum Truck Bodies

Sanders Lighting & Truck Accessories

MADE IN USA

NTEA

NOW HIRING
 INSTALLERS &/or MECHANICS

"We Thank Our Loyal Customers & Welcome The New--See You Soon!"



JOSEPH

EQUIPMENT COMPANY
300 GAY ST • MANCHESTER, NH 03103



SATURDAYS
WE ARE OPEN ALL DAY
PHONE: 603-641-8608
FAX: 603-666-3716

*****IMMEDIATE OPENING FOR
 EXPERIENCED SALESMAN
 IN THE NEW ENGLAND AREA.*****

**293 NORTH - EXIT 2 -
 LEFT ONTO BROWN AVE -
 RIGHT ONTO WINSTON ST.-
 LEFT ONTO GAY ST.
 300 GAY STREET
 ON THE RIGHT**



1996 TRAIL KING 48 X 102 STEP DECK TRAILER. HEADBOARD, SPREAD AXLE, RECENT PAINT, WORKING DAILY. CALL FOR MORE INFORMATION.



1958 MACK B75, 6 WHEEL DUMP, MACK POWER, TRIPLEX, HEAVY SINGLE AXLE REAR, 24" TIRES, EXCELLENT SHAPE, WORK OR SHOW. CALL FOR MORE INFORMATION.



2004 FORD F750 4 X 2 SERVICE TRUCK, EXT. CAB, ALTEC SERVICE BOX, 119,000 MILES, SOUTHERN TRUCK, LOCATED IN NC, GREAT CONDITION. CALL FOR MORE INFORMATION.



30' DECK

TALBERT 40 TON, 30' DECK, 18" DECK HEIGHT, 2 AXLE WITH PIN ON THIRD, AIR RIDE, HYDRAULIC DETACHABLE LOW BED, NON GROUND BEARING, DETACHES BOTH ENDS, SANDBLASTED AND PAINTED, NEW BRAKES AND SEALS, HUBCAPS, NEW DECKING, NEW DECALS & FLAPS, LO PRO TIRES, EX RIGGER TRAILER, LONG LOW LEVEL DECK. CALL FOR MORE INFORMATION.



133K MILES

1987 PETERBILT TRACTOR, 425 CAT., 8 SPEED, 40 REARS, AIR RIDE, A/C, POWER STEERING, ONE OWNER, 133K ORIG MILES. CALL FOR MORE INFORMATION.



1999 MAC 34' ALUMINUM FRAMELESS TRI AXLE END DUMP TRAILERS, AIR RIDE, SELF STEERING, AIR LIFT ON THIRD, 11 X 24.5 RUBBER. CALL FOR MORE INFORMATION.



2002 FORD F550 SUPER DUTY SERVICE TRUCK W/LINCOLN ELECTRIC WELDER & COMPRESSOR, 131,000 MILES, SOUTHERN TRUCK, LOCATED IN NC, GREAT CONDITION. CALL FOR MORE INFORMATION.



2008 FORD F750 XLT ROLLBACK TRUCK, CUMMINS ISB-250, 250 HP, AUTOMATIC TRANSMISSION, DOUBLE FRAME, SPRING SUSPENSION, 11,020 LB FRONTS, 20,280 LB REARS, 232 INCH WHEELBASE, 22' BED, RAMSEY 400 7,200 LB WINCH, 255/70R X 22.5 RUBBER. CALL FOR MORE INFORMATION.



2002 FREIGHTLINER FL70 TRACTOR (3 AVAILABLE TO CHOOSE FROM), CUMMINS ISB, 260 HP, EATON FULLER 6 SPEED, AIRLINER SUSPENSION, 10,000 LB FRONT, 23,000 LB REARS, 150 INCH WHEELBASE, 275/80R24.5 TIRES. CALL FOR MORE INFORMATION.



1988 MACK RD690, TRI AXLE, 17' STEEL BODY, 300 MACK, 8 SPEED, ENGINE BRAKE, 44,000 LB REARS, 18,000 LB FRONT, 20,000 LB PUSHER AXLE, SPRING RIDE, ELECTRIC FLIP N GO CANVAS, POWER STEERING, A/C, NEEDS TRANSMISSION WORK. LOW MILES, MA OVERWEIGHT PERMIT, WORKING DAILY. CALL 603-641-8608 FOR MORE INFORMATION.



1994 MACK RD690S DUMP TRUCK, W/12' STEEL DUMP BODY, NEW PAINT, CANVAS, BARN DOOR, 52,500 ORIGINAL MILES, 5,000 HOURS, E7, 300 HP, 8LL, CAMELBACK SUSPENSION, DOUBLE FRAME, 18K LB FRONT, 46K REARS, 198" WHEELBASE, HYD WET SYSTEM, JAKE BRAKE, A/C, 1200 X 22.5 RUBBER. CALL FOR MORE INFORMATION.



2002 FREIGHTLINER FL70 UTILITY TRUCK, 7.2L, L6 DIESEL, 131,000 MILES, SOUTHERN TRUCK, LOCATED IN NC. CALL FOR MORE INFORMATION.

www.josephequipment.com

Trades Welcome • Financing Available



JOSEPH

EQUIPMENT COMPANY
300 GAY ST • MANCHESTER, NH 03103



SATURDAYS
WE ARE OPEN ALL DAY
PHONE: 603-641-8608
FAX: 603-666-3716

*****IMMEDIATE OPENING FOR EXPERIENCED SALESMAN IN THE NEW ENGLAND AREA.*****

293 NORTH - EXIT 2 - LEFT ONTO BROWN AVE - RIGHT ONTO WINSTON ST. - LEFT ONTO GAY ST. 300 GAY STREET ON THE RIGHT



1989 KOMATSU WA350-1 WHEEL LOADER, ORIGINAL PAINT ONE OWNER, LOW HOURS, 3RD VALVE, SIDE DUMP, 23.5 X 25 RUBBER, EXCELLENT SHAPE, WORKING DAILY. CALL FOR MORE INFORMATION.



LONG REACH

2009 TEREX TXC 300 LC-2 EXTRA LONG REACH, 0 HOURS, FULL WARRANTY, LONG & LONG, A/C, LOADED. 6 TO CHOOSE FROM WITH 0 HOURS TO 1700 HOURS. FOR RENT, LEASE OR PURCHASE BY THE DAY, WEEK OR MONTH, AVAILABLE WITH BUCKET OR GRAPPLE. CALL FOR MORE INFORMATION



NEW TEREX TA300, TIER 4, GENERATION 9, 30 TON ROCK TRUCK, LOADED. SCANIA DC9 ENGINE, ZF TRANSMISSION, HYDRO STATIC POWER STEERING, HEATING BODY, REAR CAMERA, HEATED MIRRORS. MANY EXTRA, CALL FOR MORE INFORMATION.



2002 STECO DEMO HEAVY DUTY TRAILERS, 70 YARD, 36' LONG, 96" WIDE (84" WIDE INSIDE BODY), 84" SIDES, 2 AXLE, HEAVY FLOOR AND SIDES, 70,000 LB SINGLE POINT SUSPENSION, BARN DOOR, HUB PILOTTED 11/24 X 24.5 WHEELS, ONE OWNER, WORKING DAILY. CALL FOR MORE INFORMATION.



2010 CATERPILLAR GC70K FORKLIFT, 15,500 LB, TRIPLE STAGE, SIDE SHIFT. CALL FOR MORE INFORMATION.



1999 FONTAINE MODEL TB50, 50 TON, TRI AXLE, GROUND BEARING, SPRING RIDE, 24' DECK, HUB PILOTTED WHEELS, ONE OWNER, RECENT PAINT AND DECK. WORKING DAILY. CALL FOR MORE INFORMATION.



1999 J & J 30' STEEL TUB/STEEL FRAME TRI AXLE DUMP, SINGLE POINT SUSPENSION, AIR LIFT THIRD, 2 WAY GATE, FLIP N' GO CANVAS, RECENT SANDBLAST & PAINT. VERY GOOD CONDITION. CALL FOR MORE INFORMATION.



2004 GMC C4500 MECHANIC BODY BUCKET TRUCK, (2 TO CHOOSE FROM) UTILITY BODY, FIBERGLASS BODY, GAS POWERED UNIT TO RUN 26' LIFT, 8.1 LITER ENGINE, AUTOMATIC, LOW MILES. ALSO AVAILABLE 2014 INTECH TRAILER, FULL SPLICE LAB, CUMMINS GENERATOR, A/C, CABIN AIR, ALUM FRAME, FIBERGLASS DOORS. WILL SELL WITH TRUCK OR SEPARATELY. CALL FOR MORE INFORMATION.



2009 MANAC 53' TRI AXLE EXTENDABLE STEP DECK, AIR RIDE, 10' UPPER DECK, 43' LOWER DECK, 102" WIDE, AIR LIFT DECK ROLLERS. LOCATED IN COLUMBUS OH. CALL FOR MORE INFORMATION.



NEW 2016 FONTAINE XCALIBUR EXTENDABLE DROP DECK TRAILER. ADJUSTS FROM 53' TO 72'. TRI AXLE, UPPER DECK 106" LONG, 59" HIGH, LOWER DECK 42' 6" LONG, 34" HIGH. 2 SPEED LANDING GEAR. 235/75 RUBBER. WINCH TRACK AND WINCHES. CALL FOR MORE INFORMATION.



RECONDITIONED 3 AXLE DROP DECK

2000 MANAC DROP DECK TRAILER, 48' X 102", TRI AXLE, AIR RIDE, 275 X 70/22.5 TIRES ON HUB PILOTTED WHEELS. REMOVABLE HEADBOARD, SANDBLASTED AND PAINTED, NEW BRAKES, SEALS, KITS, HUBCAPS. SLIDING WINCHES, NEW WOOD DECKING, NEW AIR BAGS, SHOCKS, DECALS & FLAPS. WORKING DAILY, VERY LOW MILES. CALL FOR MORE INFORMATION.



NEW

1200 X 24 NEW RADIAL TIRES WITH TUBES AND FLAPS AVAILABLE, LIMITED AMOUNT. CALL FOR MORE INFORMATION.

www.josephequipment.com
Trades Welcome • Financing Available



JOSEPH

EQUIPMENT COMPANY
300 GAY ST • MANCHESTER, NH 03103



SATURDAYS
WE ARE OPEN ALL DAY
PHONE: 603-641-8608
FAX: 603-666-3716

*****IMMEDIATE OPENING FOR
 EXPERIENCED SALESMAN
 IN THE NEW ENGLAND AREA.*****

**293 NORTH - EXIT 2 -
 LEFT ONTO BROWN AVE -
 RIGHT ONTO WINSTON ST -
 LEFT ONTO GAY ST.
 300 GAY STREET
 ON THE RIGHT**



2000 WESTERN STAR TRI AXLE DUMP TRUCK, 475 CAT, 18 SPEED, 46 REARS, 20,000 LB PUSHER AXLE, 17' BODY, PINTLE HOOK, WORKING DAILY. CALL FOR MORE INFORMATION.



2002 FONTAINE HT35 HYD TAIL TRAILER, 48' X 102" WIDE, 2 AXLE, SPRING RIDE, BEAVER TAIL, WINCH, TOOL BOXES, ONE OWNER, ORIGINAL PAINT. CALL FOR MORE INFORMATION.



2000 FONTAINE DOUBLE DROP TRAILER, 48' X 102" WIDE, 30' DECK, MECHANICAL DETACHABLE NECK, 2 AXLE, ORIGINAL PAINT, ONE OWNER, WORKING EVERY DAY. CALL FOR MORE INFORMATION.



2010 BOMAG 66" DRUM DRIVE ROLLER (2 AVAILABLE TO CHOOSE FROM), CUMMINS POWER, FULL CAB, A/C, 1300 HOURS, CALL FOR MORE INFORMATION.



2014 KRUZ 36', 70 YARD, HEAVY DUTY, SCRAP DEMO TRAILER, ONE OWNER, LOW MILES, ALL 450 HARDOX CONSTRUCTION, 2 AXLE, SINGLE POINT SPRING SUSPENSION, ELECTRIC FLIP N GO CANVAS, LIKE NEW, CALL FOR MORE INFORMATION.



NEW 2016 DORSEY 53' TRI AXLE EXTENDABLE 50 TON STEP DECK TRAILERS, (2 AVAILABLE) AIR RIDE, 102" WIDE, 17.5 RUBBER. CALL FOR MORE INFORMATION.



2005 TALBERT 55 TON TRI AXLE LOWBOY TRAILER, SANDBLASTED AND PAINTED, NEW BRAKES, SEALS, KITS, HUBCABS, AIR BAGS, NEW WOOD DECKING, NEW DECALS, FLAPS AND VIN TAG, AIR RIDE SUSPENSION, HYDRAULIC DETACHABLE NECK, 25' DECK, 8' 6" WIDE, SET UP FOR 4TH AXLE, PLUMBED FOR BOOSTER, 255/70R X 22.5 RUBBER. CALL 603-641-8608 FOR MORE INFORMATION.



1995 PETERBILT 357, CUMMINS L10, 300 HP, EATON FULLER 7 SPEED, TANDEM AXLE, DOUBLE FRAME, WALKING BEAM SUSPENSION, 182" WHEELBASE, 13' DUMP BODY. CALL FOR MORE INFORMATION.



NEW 2016 DORSEY 50' TANDEM AXLE 40 TON STEP DECK, AIR RIDE, 102" WIDE, 17.5 RUBBER. CALL FOR MORE INFORMATION.



2014 CASE TR270 SKIDSTEER ON TRACKS. HEAT, A/C, RIDE CONTROL, 3RD VALVE, QUICK DISCONNECT, 77 ORIGINAL HOURS. CALL FOR MORE INFORMATION.



1999 TRAIL KING 35 TON, 50' LONG, 102" WIDE, AIR RIDE, HYDRAULIC BI-FOLD RAMPS, 5' BEAVER TAIL, HEADBOARD, 8' FIXED NECK, 235/75R X 17.5 RUBBER, TEXAS TRAILER, NO RUST, EXCELLENT SHAPE. CALL FOR MORE INFORMATION.



(14) FLAT BED TRAILERS AVAILABLE TO CHOOSE FROM, VARIOUS MAKES AND YEARS. PLEASE CALL FOR MORE DETAILS AND INFORMATION.

EXTENDABLES

www.josephequipment.com
Trades Welcome • Financing Available



JOSEPH

EQUIPMENT COMPANY

300 GAY ST • MANCHESTER, NH 03103



PHONE: 603-641-8608

FAX: 603-666-3716



2016 KRUZ 38' STEEL DEMO TRAILER.
2 AXLE, 70,000 LB SINGLE PT SUSP,
11 X 24.5 TIRES, HOLLAND MARK V
LANDING GEAR, HARDOX 450 STEEL,
9 PANEL GATE.
CALL FOR MORE INFORMATION.

**NEW MODEL - 2016 FONTAINE
MAGNITUDE 50 Tri Axle,**
set up for 4th, 50 TON, Air ride, 24' deck,
20" loaded deck height, Alum or steel
wheels, strobe lights, Outriggers and
D-rings. Call for more information.

**2016 KRUZ TERMINATOR, 26' STEEL
FRAME, SINGLE POINT SUSPENSION,**
2 WAY GATE, 11 X 24.5 TIRES, ALUM
WHEELS, 2 SPEED LANDING GEAR.
CALL FOR MORE INFORMATION.



27 FLAT LEVEL DECK - IN STOCK

**2016 FONTAINE 55L, 27' FLAT LEVEL
DECK, ALSO AVAILABLE IN 25' AND
26' DECK LENGTH. TRI-AXLE, AIR
RIDE, 3RD AXLE LIFT, ALUM WHEELS,
STROBE LIGHTS, SET-UP FOR 4TH
AXLE. IN STOCK, NO WAITING. CALL
FOR MORE INFORMATION.**

**NEW 2016 KRUZ 26' STEEL TUB,
ALUMINUM FRAME DUMP TRAILER,
AIR RIDE, 2 AXLE, ALUM WHEELS, 450
HARDOX, 24.5 16 PLY TIRES.
CALL FOR MORE INFORMATION.**

55 TON MODULAR WITH BEAM - IN STOCK

**2016 FONTAINE 55H MODULAR DSR, BEAM
DECK ALSO AVAILABLE, TRI AXLE, 60"
AXLE SPACING, HYDRAULIC REMOVABLE,
NON GROUND BEARING, SET UP FOR
GOOSENECK EXT, SPREADER BAR AND 4TH
AXLE FLIP, AIR RIDE, ALUM WHEELS, 22.5
RUBBER. CALL FOR MORE INFORMATION.**



**2016 FONTAINE 60 TON MODULAR 2+3+1, 26' DSR,
184" SWING CLEARANCE, SET UP FOR 2 AXLE
JEEP, 14" DECK HEIGHT, AIR RIDE, ALUM WHEELS,
275/70R X 22.5 RUBBER, NON GROUND BEARING.
ALSO TAKING ORDERS FOR 2013 FONTAINE 55L
WITH 26' OR 27' FLAT LEVEL DECK, 18" DECK
HEIGHT. CALL FOR MORE INFORMATION.**

**2016 FONTAINE RENEGADE LXL, 14"
DECK HEIGHT, 30' DECK W/6" GROUND
CLEARANCE, 2 AXLE, SET UP FOR
THIRD, HYDRAULIC DETACHABLE, IN
STOCK NO WAITING.
CALL FOR MORE INFORMATION.**

**2016 KRUZ, 70 YARD, TRI AXLE, 70,000
SINGLE POINT, LIFT ON THIRD AXLE,
1/4 INCH 450 HARDOX, FLOOR, SIDES,
NOSE, GATE, 12 PANEL GATE, 11 X 24.5
RUBBER, ALUM WHEELS. IN STOCK,
NO WAITING.
CALL FOR MORE INFORMATION.**



2 AVAILABLE

**2016 FONTAINE TRAVERSE
HYDRAULIC TAIL, 48' LONG, 102"
WIDE, AIR RIDE, HYDRAULIC UPPER
DECK. HYDRAULIC WINCH, REMOTE
CONTROL, ALUM WHEELS, DUAL
CONTROLS.
CALL FOR MORE INFORMATION.**

**2016 FONTAINE 60 TON MODULAR, 26'
DSR, 60" AXLE SPACING, 184" SWING
CLEARANCE, SET UP FOR 2 AXLE JEEP, 14"
DECK HEIGHT, AIR RIDE, ALUM WHEELS,
275/70R X 22.5 RUBBER, NON GROUND
BEARING. IN STOCK.
CALL FOR MORE INFORMATION.**

3+3+3

**1998 KAYLN SIEBERT. 75TON 3+3+3, AIR
RIDE, WEST COAST BOGIE, 3 AXLE, AIR
RIDE JEEP WITH POWER TOWER, 10' WIDE
TRAILER, 60' OVERALL LENGTH, 48' OF
USEABLE DECK, 275/70 X 22.5 RUBBER,
SANDBLASTED & PAINTED, EXCELLENT
SHAPE, ALUM WHEELS ON JEEP AND
BOOSTER. CALL FOR MORE INFORMATION.**

Trades Welcome • Financing Available • www.josephequipment.com

TRAILER RENTALS • TRAILER RENTALS • TRAILER RENTALS •

WE RENT STEP DECKS • LOW BEDS • HI FLATS • DEMO/SCRAP • TRAILERS

RAVENS

Kruz

JOSEPH

STEPPEE

EQUIPMENT COMPANY
 300 GAY ST. • Manchester, NH 03103

PHONE: 603-641-8608
FAX: 603-666-3716

FONTAINE

NOW TAKING ORDERS FOR DUMP TRAILERS AND LOWBEDS FOR FALL DELIVERY



14" DECK HEIGHT

NEW 2016 FONTAINE RENEGADE LXL, 14' deck height, 30' deck w/ 6' ground clearance, 2 axle, set up for 3rd hydraulic detachable or mechanical detachable. In stock, no waiting. Call For More Info.



IN STOCK, NO WAITING

2016 FONTAINE MAGNITUDE 6031T MODULAR DROP SIDE RAIL WITH 28' DECK, HYDRAULIC REMOVABLE NECK, NON GROUND BEARING, AIR RIDE, TRI AXLE, THIRD AXLE LIFT, SET UP FOR 4TH ALUM WHEELS, 275/70 X 22.5 TIRES, LOADED. CALL FOR MORE INFORMATION.



55 TON EXTENDABLE

2016 FONTAINE MAGNITUDE 55MX, 55 TON EXTENDABLE TRAILER, 30' to 60', MODULAR, 10' HIGH, 10' DECK, SET UP FOR 4TH ALUM WHEELS, 275/70 X 22.5 TIRES, LOADED. CALL FOR MORE INFO.



NEW ROGERS 55 TON DROPSIDE RAIL LOWBED TRAILER, 25ft steel deck, tri-axle, air ride, lift on third axle, strobe light pkg, covered bogie, 15" loaded deck height, 2 pin position, 4th axle set up (in stock), non ground bearing in stock and no waiting



NEW 2016 FONTAINE SPECIALIZED MAGNITUDE 55L, Tri Axle, air ride, set up of 4th axle, non ground bearing, 25' deck, LED lights, aluminum wheels, strobe light package, lift on 3rd axle, 2 pin position, loaded. In Stock no waiting. Call For More Info.



55 TON MODULAR WITH BEAM - IN STOCK

2016 FONTAINE 55T MODULAR DUMPS, BEAM DECK ALSO AVAILABLE, TRI AXLE, 60' GOOSENECK EXT, SPREADER BAR AND 4TH AXLE LIFT AIR RIDE ALUM WHEELS \$22.5 RUBBER, CALL FOR MORE INFORMATION.



2016 FONTAINE 55 TON LOWBED, Air ride, tandem axle, 29ft tall level deck, non ground bearing, hyd goose neck, set up for future 3rd axle. In stock. Call For More Info



70 TON 2+3+2

2016 FONTAINE 70T 2+3+2, 2000 SHEAR RAIL, 4 AXLE, 28' DECK, HYDRAULIC DETACHABLE, IN STOCK, NO WAITING, NON GROUND BEARING, 100' WIDE, 15' HI DECK, SPREADER BAR AND 3RD AXLE LIFT, WHEELS, 275/70R X 22.5 TIRES, 28' BEAM DECK AVAILABLE. CALL FOR MORE INFORMATION.



NEW 2016 FONTAINE 55 TON, Drop side rail, tri axle, air ride, set up for 4th, non ground bearing, LED lights, aluminum wheels, strobe lights, loaded, in stock, no waiting. Call for more information



NEW 2016 SPECIALIZED 55 TON BEAM TRAILER, 3+1 modular, NGB, detach both ends, T/A, A/R, lift on 3rd, set up 4th, set up for gooseneck extension. Call For More Info.

Trades Welcome • Financing Available • www.josephequipment.com

TRAILER RENTALS • TRAILER RENTALS • TRAILER RENTALS •

You Get The Most With The Post